



Property Features

- Beautifully presented end-terraced house
- Sought-after village location in Prestwood
- Three first-floor bedrooms
- Modern family bathroom
- Stylish living room
- Attractive kitchen/diner
- Ground floor bedroom four / study
- Ground floor shower room
- Driveway parking
- Flexible and well-maintained accommodation throughout

Full Description

Ready to move in and just live, is this beautifully presented end-terraced house located in the highly regarded village of Prestwood, offering well-proportioned and flexible accommodation ideally suited to modern family living.

The ground floor is arranged around a welcoming entrance hall leading into a stylish and comfortable living room, providing an inviting space for relaxation and entertaining. To the rear, the kitchen/diner is attractively finished and offers ample space for family meals and social gatherings, making it a true hub of the home.

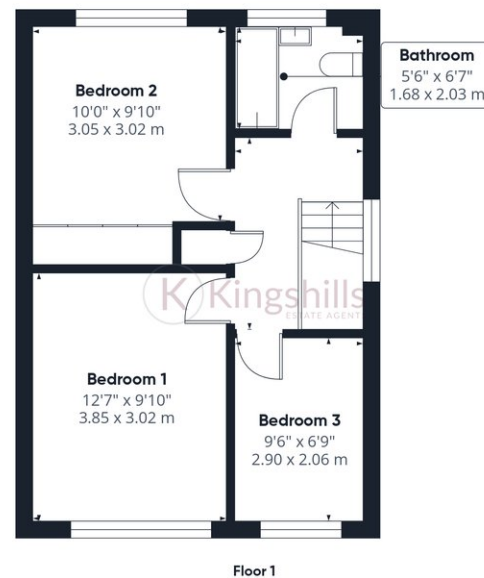
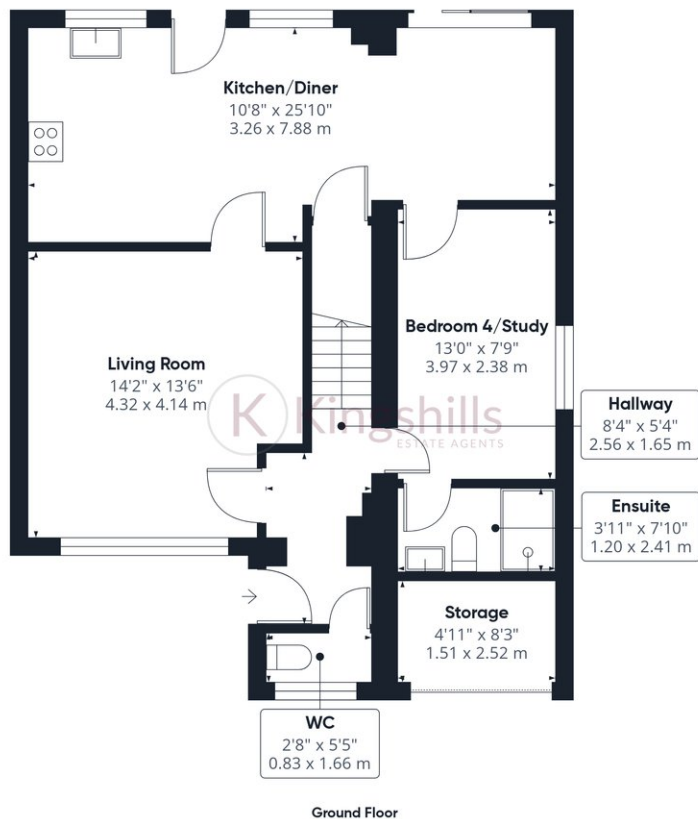
Also on the ground floor is a fourth bedroom, which offers excellent versatility and could equally be used as a home office or study. This room benefits from its own shower room, ideal for guests or multi-generational living. A cloakroom with W.C. completes the ground floor accommodation.

Upstairs, the first floor provides three well-proportioned bedrooms, all presented to a high standard and served by a modern family bathroom. The layout is both practical and well balanced, with good natural light throughout.

Externally, the property benefits from driveway parking along with useful storage space to the front of the garage, ideal for bikes, tools and general storage. As an end-terraced home, it also enjoys additional privacy and a greater sense of space. The rear garden is laid to lawn and offers an ideal space for a family to enjoy or to sit back and relax.







Approximate total area⁽¹⁾
1096 ft²
101.9 m²

(1) Excluding balconies and terraces

Calculations reference the RICS IPMS 3C standard. Measurements are approximate and not to scale. This floor plan is intended for illustration only.

GIRAFFE360

