



52 Kingsley Crescent, High Wycombe, Buckinghamshire, HP11 2UL

Asking Price | £600,000

Property Features

- Four bedroom detached family home
- Basement room and cloakroom
- Light and airy Kitchen/Dining Room
- Sitting room
- Cloakroom
- Family Bathroom
- Garage & Driveway parking
- Close to Tom Burt's Hill wildlife site
- Close to Popular Schools
- Awaiting EPC / Council Tax Band F

Full Description

A spacious detached home located on the popular 'Poets Corner' development. The house is ideal for families as it has accommodation over three floors with four bedrooms and a driveway with garage. This home has been improved by the present owners and is within a short distance of High Wycombe Train Station.

As you enter the property there is an entrance porch leading to a hallway with access to the sitting room, re-fitted kitchen/diner and cloakroom. There is also a staircase leading to the basement room. On the first floor there are four bedrooms and a family bathroom.

Outside

The rear garden is mainly laid to lawn backing onto woodland and there is driveway parking to the front

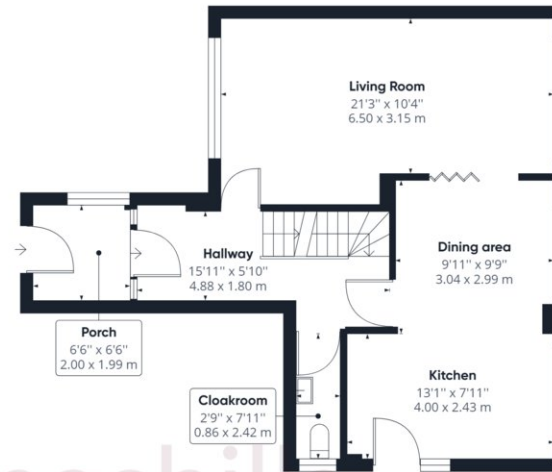
The property is conveniently located to both High Wycombe town centre as well as multiple popular schools including John Hampden and Wycombe High School. Access to the town makes this ideal for commuters to London who can also benefit from Junction 4 of the M40. There are beautiful walks close by on Tom Burt's Hill which has been recognised as a Local Wildlife Site due to the variety of wildlife that can be found in the area. It's a great place to go and get away from the hustle and bustle of town life without having to jump in the car.



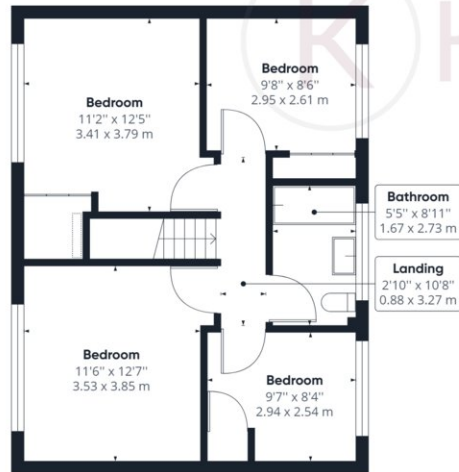




Floor -1



Ground Floor



Floor 1

Approximate total area⁽¹⁾

1454.71 ft²
135.15 m²

Reduced headroom

11.07 ft²
1.03 m²

(1) Excluding balconies and terraces

 Reduced headroom
(below 1.5m/4.92ft)

While every attempt has been made to ensure accuracy, all measurements are approximate, not to scale. This floor plan is for illustrative purposes only.

GIRAFFE360