



Amersham Road, High Wycombe, Buckinghamshire, HP13 5AA

Asking Price | £2,400

## Property Features

---

- Large End Terrace Town House
- 4 Double Bedrooms
- Open Plan Living Room/Kitchen/Diner
- 2 EnSuite Shower Rooms and Family Bathroom
- Study/Family Room
- Terraced Garden
- 2 Parking Spaces
- Close To Local Schools and Amenities
- Available Now
- Flexible Furnishings

## Full Description

---

Constructed in 2019 by a well regarded local developer, this stunning and spacious town house offers well planned and versatile family accommodation over three floors. The property is within walking distance of the ever popular and highly regarded Royal Grammar School and Godstowe School.

Spacious Entrance Hall with Large Cloakroom. Stunning and open plan Kitchen/Dining Room/Living Room, The Kitchen area has fully integrated appliances with Stone Work Tops, the Living Area has Bifold Doors that lead on the rear patio. There is a good sized Study located at the front of the house. 2 good sized Double bedrooms to the first floor both with independent Ensuite Shower Rooms and Built in Wardrobes. 2 further Double Bedrooms to the second floor served by a modern Family Bathroom. Outside there is parking for two cars and to the rear there is a large terraced garden with patio.

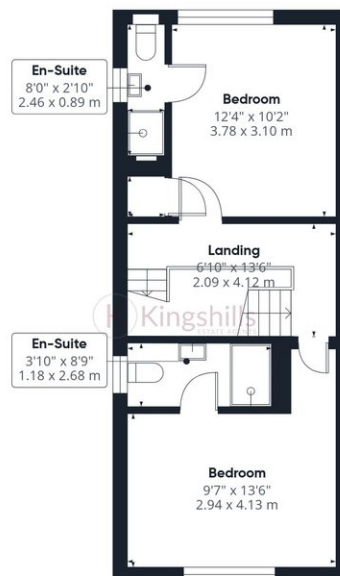
High Wycombe town centre offers huge range of restaurants, bars and the Eden shopping centre. Placed at Junction 4 of the M40 and having a train station in the centre offering a 24 minute commute to London Marylebone, High Wycombe is an ideal location to commute from. With a range of fantastic primary as well as renowned grammar and private schools, education is one of the main reasons people move to High Wycombe and stay there.



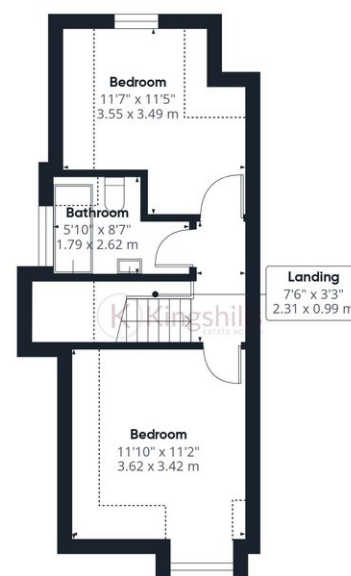








Floor 1



Floor 2

**Approximate total area<sup>(1)</sup>**

1293 ft<sup>2</sup>  
120.1 m<sup>2</sup>

**Reduced headroom**

77 ft<sup>2</sup>  
7.1 m<sup>2</sup>

(1) Excluding balconies and terraces

**Reduced headroom**

Below 5 ft/1.5 m

Calculations reference the RICS IPMS 3C standard. Measurements are approximate and not to scale. This floor plan is intended for illustration only.

GIRAFFE360