



Property Features

- Beautifully improved three-bedroom semi-detached
- Stunning elevated views across High Wycombe
- Spacious living room with large balcony
- Modern kitchen/breakfast room with fitted appliances
- Two further bedrooms and contemporary family bathroom
- Welcoming entrance hall with cloakroom and useful study/storage space
- Terraced rear garden with large patio and seating area ideal for entertaining
- Driveway parking for two cars and garage

Full Description

A beautifully presented and thoughtfully improved semi-detached home, superbly positioned on the outskirts of High Wycombe and close to the popular village of Downley. The property has been significantly enhanced by the current owners and now offers stylish, well-planned accommodation arranged over three floors, complemented by far-reaching views across High Wycombe.

The ground floor welcomes you with a bright and spacious entrance hall, together with a cloakroom and a useful large storage cupboard which could easily be adapted to create a compact study area if required.

To the first floor is an impressive living room which enjoys direct access onto a generous balcony, perfectly positioned to take in the stunning elevated views over High Wycombe. To the rear of the property is a spacious and modern kitchen/breakfast room fitted with contemporary units and integrated appliances, providing an excellent space for both everyday living and entertaining. The kitchen also benefits from direct access onto the rear garden.

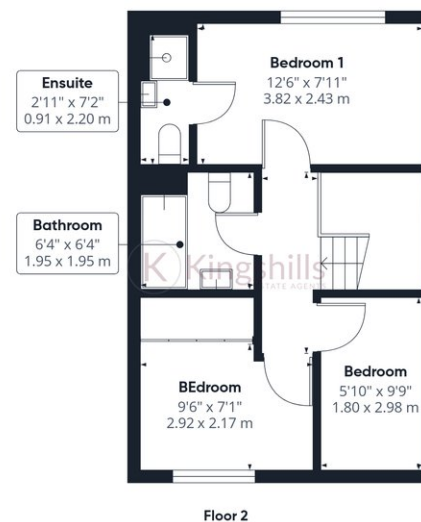
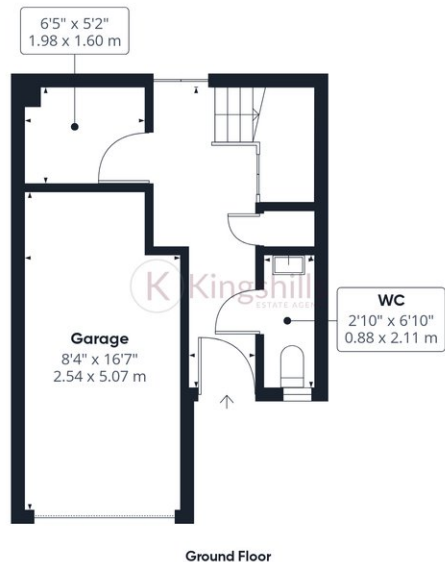
The second floor provides three well-proportioned bedrooms. The principal bedroom benefits from its own ensuite shower room, whilst the two additional bedrooms enjoy pleasant outlooks to the front with attractive elevated views. These bedrooms are served by a modern family bathroom.

Outside, the property features a terraced rear garden designed for both relaxation and entertaining, with a generous patio and seating area. To the front there is off-street parking for two vehicles along with access to the garage.

Overall, this is a superb home offering modern living in a sought-after location, combining stylish accommodation with wonderful views and excellent access to both High Wycombe town centre and the surrounding countryside.







Approximate total area^m

955 ft²
88.8 m²

Balconies and terraces

84 ft²
7.8 m²

(1) Excluding balconies and terraces

Calculations reference the RICS IPMS 3C standard. Measurements are approximate and not to scale. This floor plan is intended for illustration only.

GIRAFFE360

