



Flat 1, 11 Hillview Road, High Wycombe, Buckinghamshire, HP13 6XY

Asking Price | £1,500

Property Features

- Two-Bedroom Split-Level Maisonette
- Spacious First-Floor Open-Plan Kitchen/Living Area
- First Floor Includes a Well-Proportioned Bedroom with En-Suite and a Modern Family Bathroom
- Top Floor Features a Large Second Bedroom with Its Own Shower Room
- Finished To a High Standard with a Stylish, Contemporary Interior Throughout
- Off-Street Parking Available to the Front of the Property
- Private Garden to the Rear, Ideal for Outdoor Space and Entertaining
- Conveniently Located for High Wycombe Town Centre
- EPC Rating C / Council Tax Band B
- Available Now

Full Description

A beautifully presented two-bedroom split-level maisonette situated on Hillview Road, offering stylish and modern living throughout.

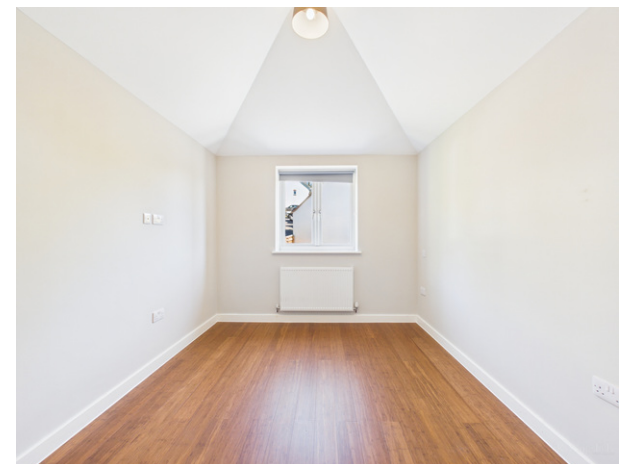
This home benefits from its own private entrance, leading to a bright and spacious first-floor open-plan kitchen and living area, perfect for both relaxing and entertaining. The first floor also features a well-proportioned bedroom with en-suite facilities, along with a contemporary family bathroom.

The top floor boasts a generously sized second bedroom, complete with its own shower room, creating a versatile and private space ideal for guests or a principal suite.

Externally, the property offers convenient off-street parking to the front and a private garden to the rear, providing a great outdoor space.

Finished to a high standard with a modern interior, this property is ideally located for High Wycombe town centre, offering easy access to a range of shops, restaurants, and amenities. Excellent transport links are nearby, including High Wycombe train station with direct services to London Marylebone, as well as quick access to the M40, making it ideal for commuters.

An excellent opportunity for professionals, couples, or small families seeking a contemporary home in a well-connected location.







Approximate total area⁽¹⁾

717 ft²
66.6 m²

Reduced headroom

20 ft²
1.8 m²

(1) Excluding balconies and terraces

Reduced headroom
..... Below 5 ft/1.5 m

Calculations reference the RICS IPMS 3C standard. Measurements are approximate and not to scale. This floor plan is intended for illustration only.

GIRAFFE360