



Property Features

- Charming Two Bedroom Cottage Located in the Popular Village of Longwick
- Convenient Access to Princes Risborough, Local Amenities and Rail Links to London Marylebone
- Spacious Living Area Featuring Attractive Exposed Wooden Beams
- Bright Kitchen to the Rear Overlooking the Garden
- Well Maintained Rear Garden With Patio Area and Lawned Section
- Two Generous Double Bedrooms on the First Floor
- Modern Family Bathroom Finished to a Good Standard
- Available Early June
- Garage to Rear
- EPC Rating D / Council Tax Band D

Full Description

Located in the popular Buckinghamshire village of Longwick, this charming two-bedroom cottage offers a blend of character and modern living, with excellent access to Princes Risborough, local shops, schools and transport links, including nearby rail services into London Marylebone. The surrounding Chiltern countryside also provides plenty of scenic walks and outdoor space.

The property features a spacious living area with attractive exposed wooden beams, adding warmth and character to the home. To the rear, the fitted kitchen overlooks the garden and offers a practical and bright space for everyday living.

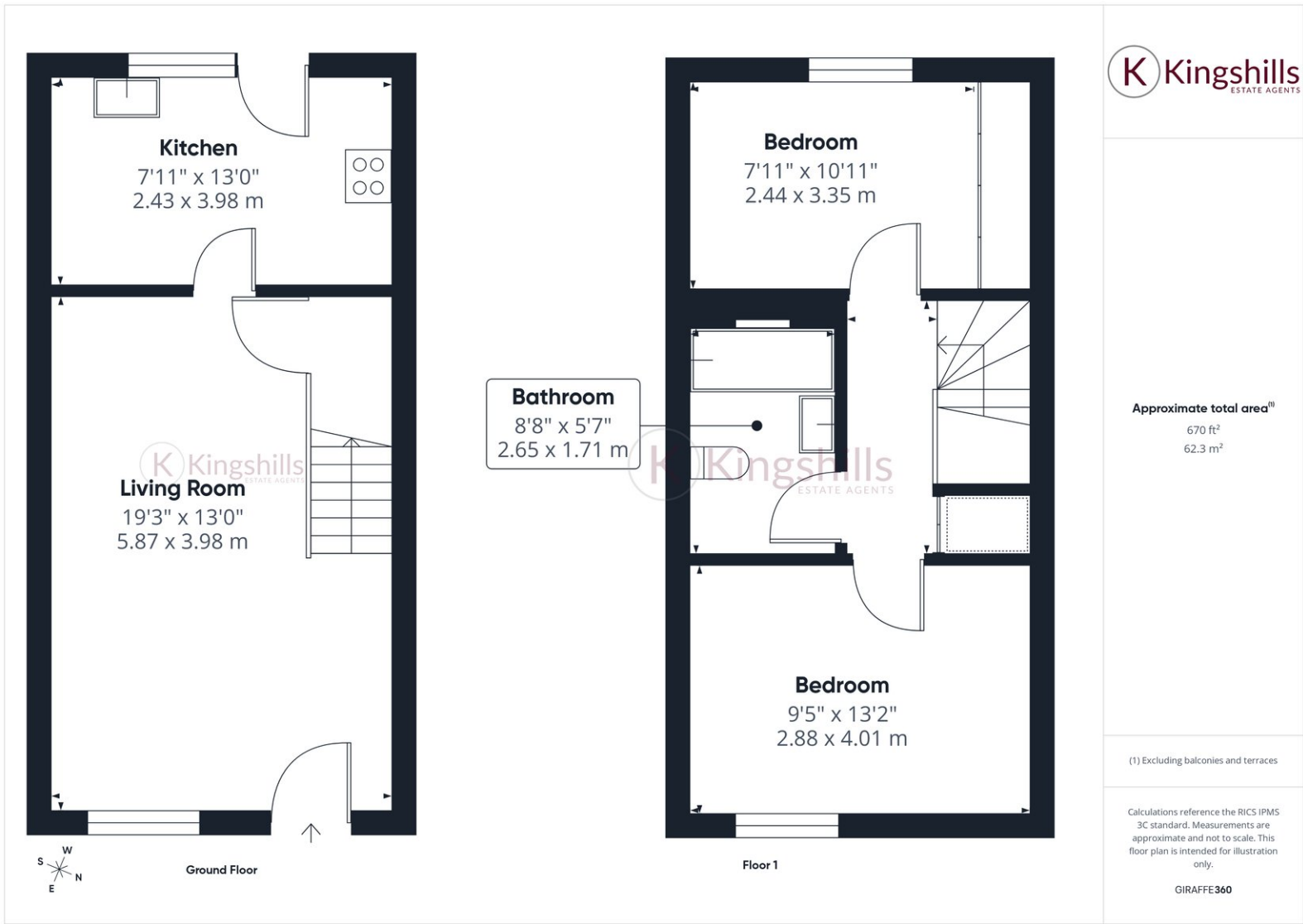
Outside, the well-maintained rear garden benefits from a patio seating area and a lawned section, ideal for relaxing or entertaining during the warmer months. The property also benefits from a garage, providing useful storage or parking space.

Upstairs comprises two generous double bedrooms and a modern family bathroom finished to a good standard.

Available early June.







Kingshills Estate Agents
C1C Comet Studios
Amersham
Buckinghamshire
HP7 0PX

01494 939868
hello@kingshills.co.uk
kingshills.co.uk

Agents Note: Whilst every care has been taken to prepare these particulars, they are for guidance purposes only. All measurements are for general guidance purposes only and whilst every care has been taken to ensure accuracy, they should not be relied upon and potential buyers/tenants are advised to recheck the measurements