



Property Features

- Lovely End of Terraced Home
- Two Bedrooms
- Good Order Throughout
- Modern Fitted Kitchen
- Rear Garden
- Garage
- Shower Room
- Gas Heating
- Unfurnished
- Available Now

Full Description

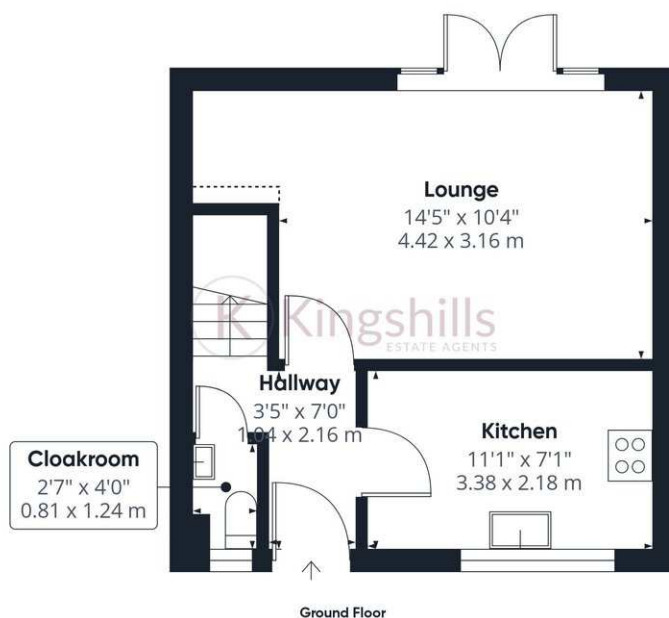
A delightful 2-bedroom end of terraced home located just to the north of High Wycombe and within a short distance of High Wycombe train station. The property is situated in a cul-de-sac and is within walking distance of Totteridge common.

Accommodation comprises; entrance hall, downstairs cloakroom, living room with doors leading on to the rear gardens, modern fitted kitchen, 2 bedrooms to the first floor and bathroom, double glazing, and gas to radiator heating. To the rear there is a lovely, secluded garden that is all patio for low maintenance which also extends down to the side of the property. There is also a garage located to the rear.

Available Now on an unfurnished basis.







Approximate total area⁽¹⁾

593 ft²

55 m²

Reduced headroom

2 ft²

0.2 m²

(1) Excluding balconies and terraces

Reduced headroom

..... Below 5 ft/1.5 m

Calculations reference the RICS IPMS 3C standard. Measurements are approximate and not to scale. This floor plan is intended for illustration only.

GIRAFFE360

