



Badgers Rest, Marlow Road, Bisham Village, Bisham, Bucks, SL7 1RR

Property Features

- Delightful village location one mile south of Marlow
- Two off street parking spaces
- Three bedrooms
- Solar Panels
- Pretty well maintained garden
- Excellent links to A404, M40 & M4
- EPC D:68 | Council Tax Band F

Full Description

Badgers Rest is a lovely three-bedroom semi-detached home, ideally situated in the highly sought-after village of Bisham. The property offers three bedrooms, a large family bathroom and versatile, well-balanced accommodation downstairs with the added benefits of two off-street parking spaces, making it an ideal home for families, professionals, or those looking to enjoy village life with excellent connectivity.

Bisham is a picturesque Thames-side village, well known for its historic charm, strong community spirit, and beautiful surrounding countryside. The village enjoys scenic walks, access to the River Thames, and a peaceful yet convenient setting just outside Marlow.

The area is particularly popular with families due to its excellent local schools, with a number of highly regarded primary and secondary options nearby, including both state and independent schools within easy reach.

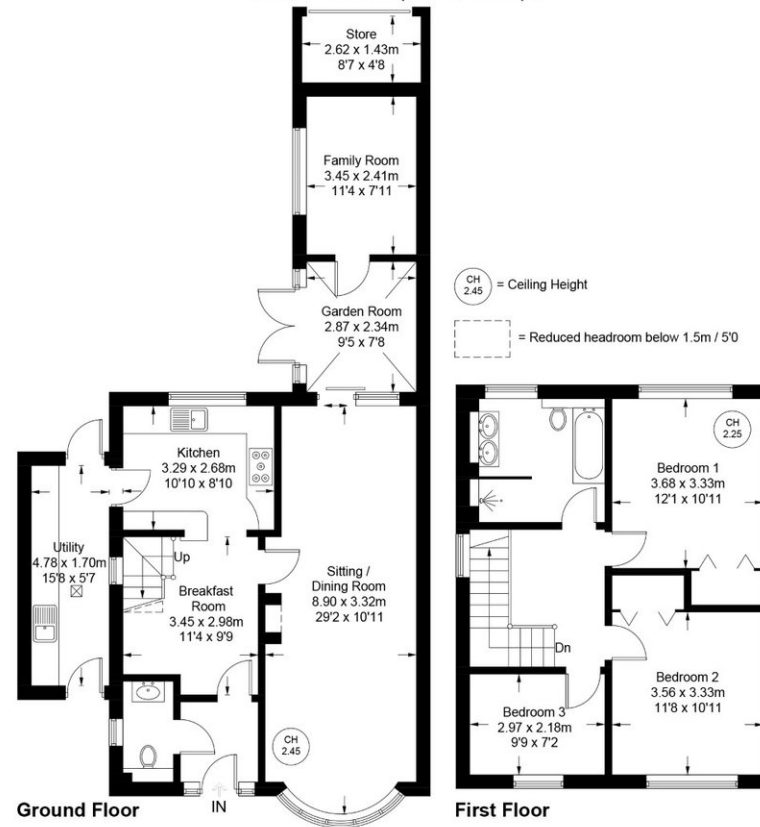
Transport links are superb, with Marlow and Maidenhead close by, providing fast rail services into London Paddington, as well as access to the Elizabeth Line. Road connections are also excellent, with the A404 linking to the M4 and M40, making commuting across the Thames Valley and into London straightforward.





Bisham Village

Approximate Gross Internal Area
 Ground Floor = 80.1 sq m / 862 sq ft
 First Floor = 52.5 sq m / 565 sq ft
 Store = 3.8 sq m / 41 sq ft
 Total = 136.4 sq m / 1468 sq ft



Floor Plan produced for Kingshills by Media Arcade ©.

Illustration for identification purposes only. Window and door openings are approximate. Whilst every attempt is made to assure accuracy in the preparation of this plan, please check all dimensions, shapes and compass bearings before making any decisions reliant upon them.

Kingshills Estate Agents
 Covering Marlow
 Bourne End, Maidenhead
 & Surrounds

01628 561222
 davidandsusan@kingshills.co.uk
 kingshills.co.uk

Agents Note: Whilst every care has been taken to prepare these particulars, they are for guidance purposes only. All measurements are for general guidance purposes only and whilst every care has been taken to ensure accuracy, they should not be relied upon and potential buyers/tenants are advised to recheck the measurements