

AP MORGAN



Sandringham Road, Yardley Wood,
£1,000 per month

Features:

- Upper Floor Two Bedroom Apartment
- Ensuite to Master & Separate Bathroom
- Open Plan Living/Diner
- Fitted Kitchen
- Allocated Parking Space
- Less Than One Mile from Train Station
- Close to Children's Play Area
- Communal Gardens

Description:

A spacious and well-presented two-bedroom first floor apartment, offering comfortable and contemporary living in a highly convenient location.

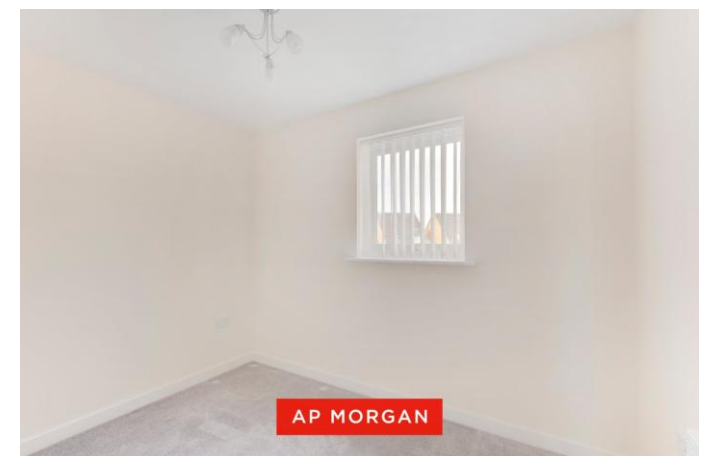
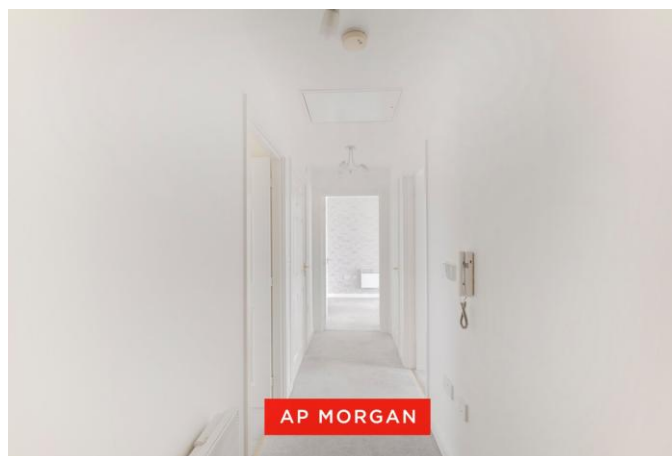
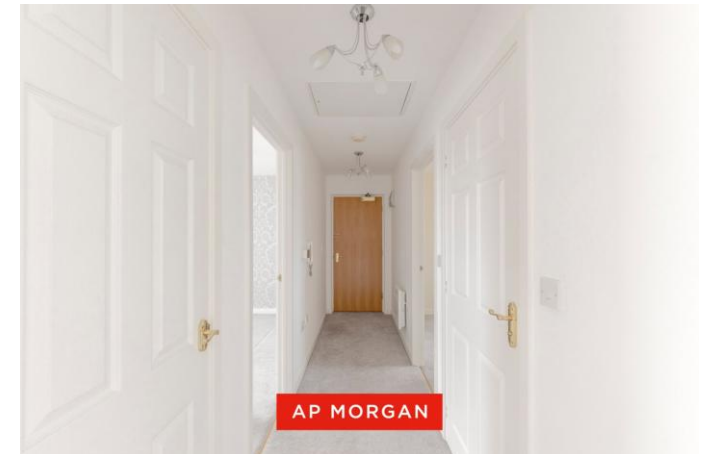
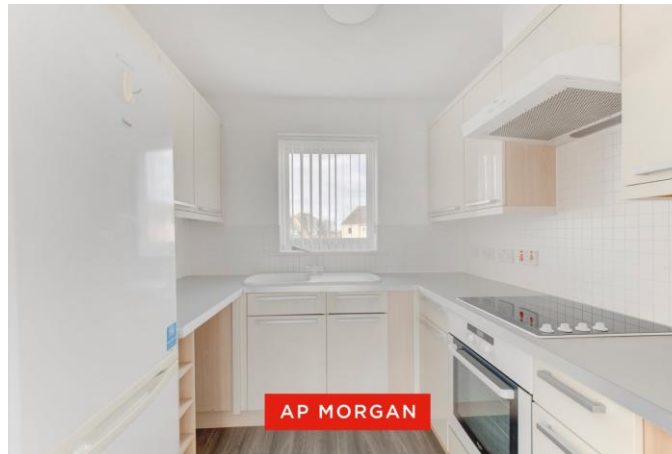
The property is positioned less than a mile from the train station and close to a local children's play area, combining everyday convenience with a pleasant community setting.

The accommodation includes two well-proportioned bedrooms, with the principal bedroom benefiting from an ensuite shower room, alongside a separate family bathroom. The open-plan living and dining area provides a bright and versatile space, perfect for both relaxing and entertaining, while the kitchen is well laid out for practical day-to-day use.

Additional features include allocated parking and access to a communal garden, offering outdoor space without the maintenance.

With excellent transport links, a range of nearby amenities and a thoughtfully designed interior, this apartment presents a fantastic opportunity for those seeking a stylish home.

Early viewing is recommended.



Details:

Hall

Living Room 16'1" x 12'2" (4.9m x 3.7m) Both Max

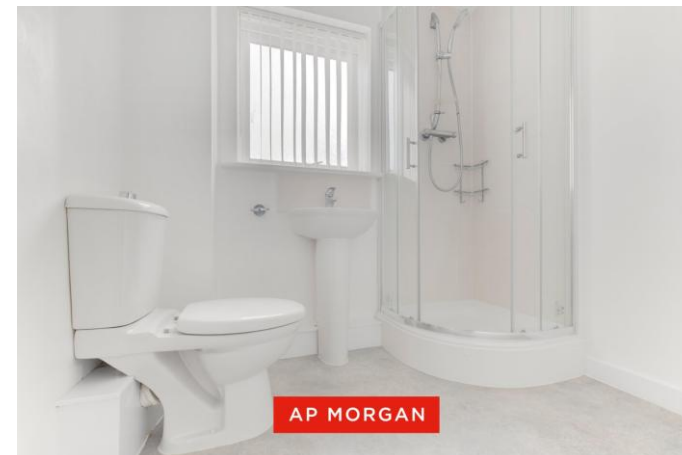
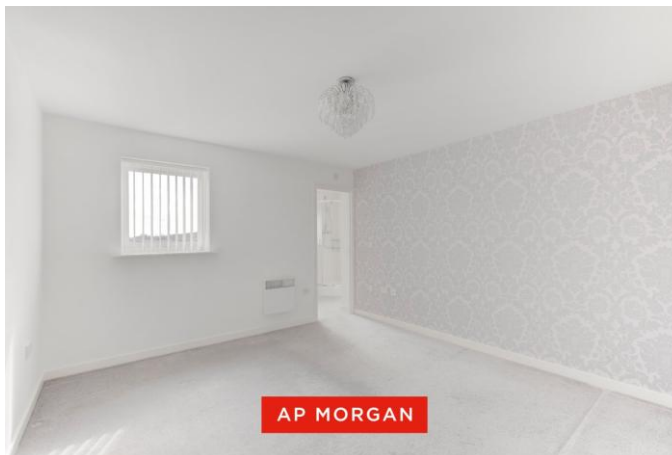
Kitchen 7'7" x 6'11" (2.3m x 2.1m)

Bedroom 1 12'2" x 12'1" (3.7m x 3.68m)

Ensuite 6'10" x 6' (2.08m x 1.83m)

Bedroom 2 9'7" x 6'11" (2.92m x 2.1m)

Bathroom 6'8" x 6'6" (2.03m x 1.98m)

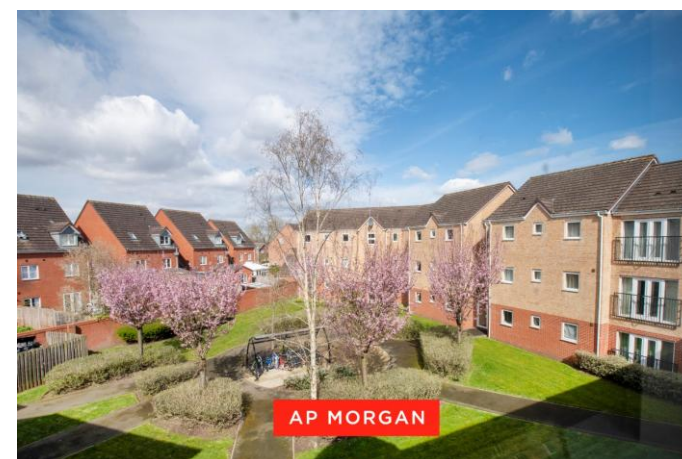


EPC Rating: C

Council Tax Band: B (tbc by solicitors).

Tenure: To be advised (tbc by solicitors).

For more information or to arrange a viewing, please call us on 0121 817 8585.



How can we help you?

Need a mortgage?

We recommend Wiser Mortgage Advice. They will search the market for you to ensure you get the right lender and mortgage deal. They typically achieve mortgage offers much more quickly than if you were dealing with lenders directly.

The initial appointment is free and without obligation. Call us on 0121 817 8585, or visit their website for more information: www.wisermortgageadvice.co.uk

Property to sell?

If you need to sell a property in order to buy, you ideally need to be on the market at least (and preferably Sold STC) before viewing, otherwise you may lose out to other buyers when the right property comes along. In these circumstances we can get your property 'live' quickly. Just book a free valuation and we will visit your property and discuss your needs.

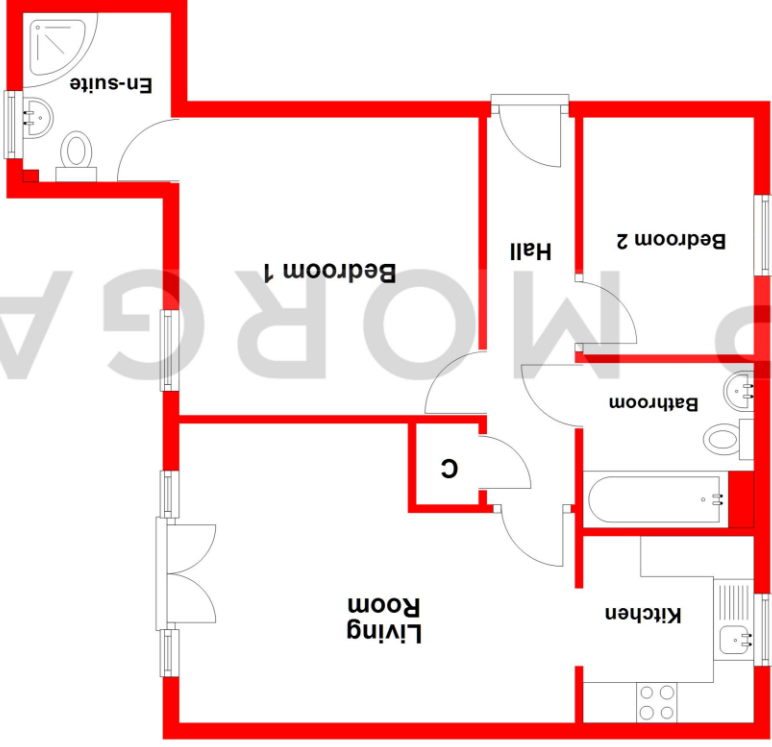
Need a solicitor?

A good solicitor can save you literally weeks of time in the buying/selling process, reducing the stress levels of all involved. We will instruct a reputable firm that is competitive on cost and very reliable. Just ask for a quote.

Need a removal company and storage?

A professional removal company takes the stress out of moving, knowing that your belongings are safe and insured far outweighs any small savings by trying to do it yourself or using a man-and-a-van service. We work closely with and recommend Cube Removals as the leading local firm. For peace of mind and a reliable service call them on 0800 193 0000 or visit their website, cuberemovals.co.uk, to arrange a survey.

Ground Floor
Approx. 56.8 sq. metres (610.9 sq. feet)



Total area: approx. 56.8 sq. metres (610.9 sq. feet)

Whilst every attempt has been made to ensure the accuracy of the floorplan contained here, measurements of doors, windows, rooms, and any other items are approximate and no responsibility is taken for any error, omission or mis-statement. This plan is for illustrative purposes only and should be used as such by any prospective purchaser. The services, systems and appliances shown have not been tested and no guarantee as to their operability or efficiency can be given.

Plan produced using PlanUp.

No statement in these details is to be relied upon as representation of fact, and purchasers should satisfy themselves by inspection or otherwise as to the accuracy of the statements contained within. These details do not constitute any part of any offer or contract. AP Morgan and their employees and agents do not have any authority to give any warranty or representation whatsoever in respect of this property. These details and all statements herein are provided without any responsibility on the part of AP Morgan or the vendors. Equipment: AP Morgan has not tested the equipment or central heating system mentioned in these particulars and the purchasers are advised to satisfy themselves as to the working order and condition. Measurements: Great care is taken when measuring, but measurements should not be relied upon for ordering carpets, equipment, etc. The Laws of Copyright protect this material. AP Morgan is the Owner of the copyright. This property sheet forms part of our database and is protected by the database right and copyright laws. No unauthorised copying or distribution without permission.