

AP MORGAN



Feckenham Road, Astwood Bank, Redditch
Offers in the region of £230,000

Features:

- **OFFERED WITH NO ONWARD CHAIN**
- End of terrace property
- Two bedrooms
- Spacious lounge
- Well-fitted kitchen
- Low maintenance rear garden
- On-street parking
- Sought-after location

Description:

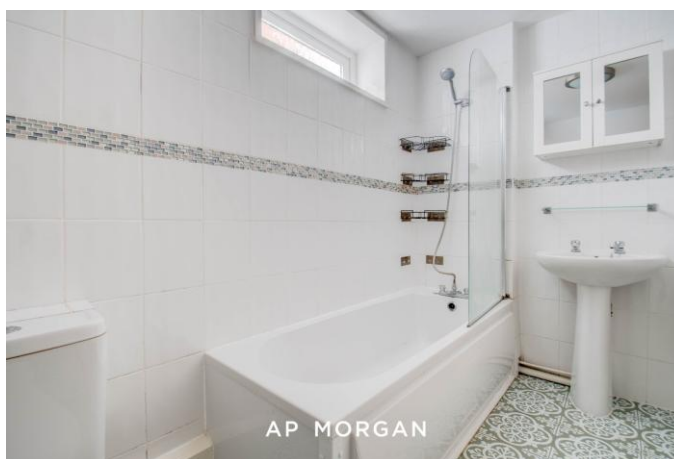
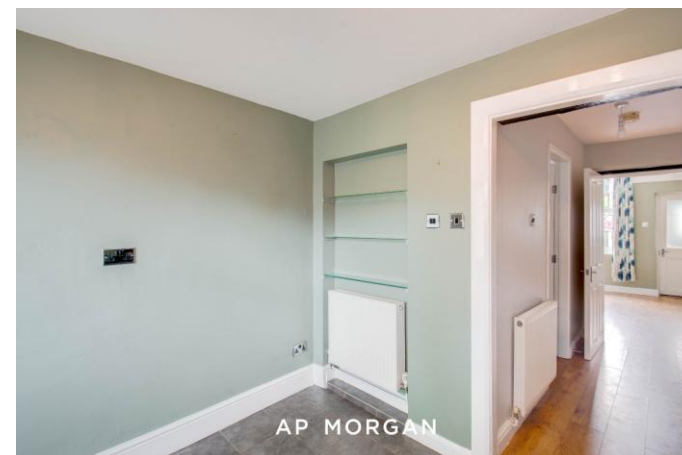
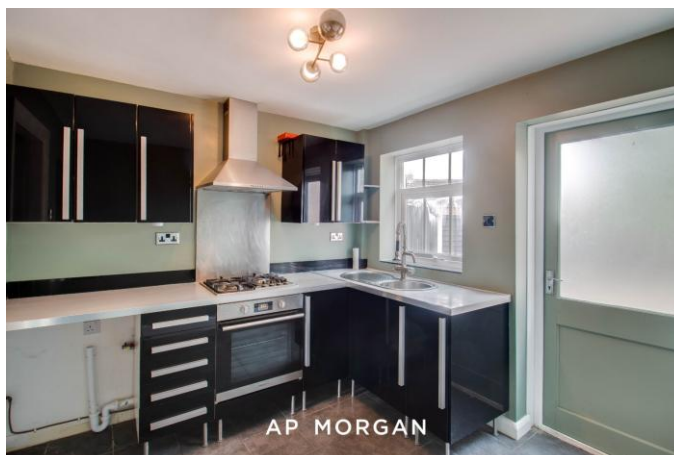
Introducing this end-of-terrace property, offered with no onward chain. The property features two bedrooms, a generous lounge, a well-fitted kitchen, a low-maintenance rear garden, and on-road parking to the front. It is situated in the highly sought-after location of Astwood Bank, Redditch.

On arrival, the property offers a patio area at the front, with gated borders providing an excellent space for bin storage. The entrance door is located to the left.

The ground floor welcomes you into a porch, which leads into the generous lounge. This comfortable living space features a fireplace with built-in side storage units on either side, as well as access to the hallway. The hallway comprises stairs rising to the first floor, with an open space beneath that is ideal for coat and shoe storage. To the right is the bathroom, fitted with a WC, wash basin, and bathtub with an overhead shower. At the end of the hallway is the kitchen, which is fitted with ample storage and worktop space, an integrated oven with a gas hob and extractor hood, and space for freestanding appliances. The kitchen also benefits from a door opening onto the rear garden.

The first floor provides access to two bedrooms. Bedroom one is a spacious double room with space for additional storage furniture, while bedroom two is a generous single bedroom.

The rear garden initially opens onto a decked area, providing an excellent space for outdoor furniture and al fresco dining. The remainder of the garden is laid with stone and features a mature tree and shrubbery. The garden is enclosed by fencing and a brick wall to the right-hand side.



Ideally situated in Astwood Bank, the property is within walking distance of well-regarded local schools, shops, and countryside walks. Redditch Town Centre is just a short drive away and offers a wide range of amenities, including a bus station and railway station. The national motorway network, including the M5 and M42, is also easily accessible.

Details:

Porch

Lounge 11'11" x 11'7" (3.63m x 3.53m)

Hall

Kitchen 8'9" x 9'10" (2.67m x 3m)

Bathroom 9' x 5'1" (2.74m x 1.55m)

Bedroom One 12' x 11'7" (3.66m x 3.53m)

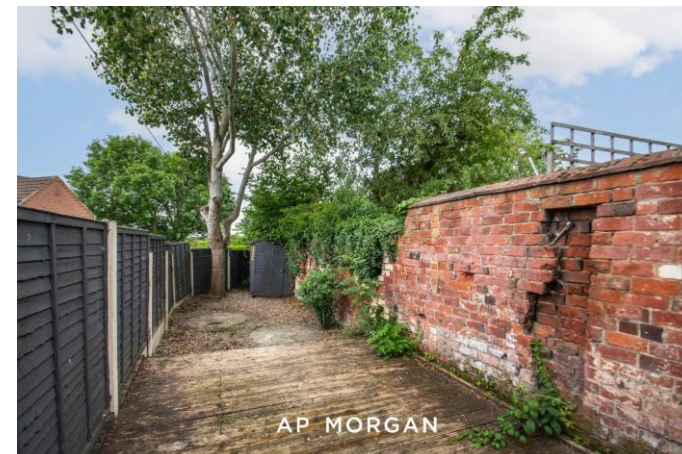
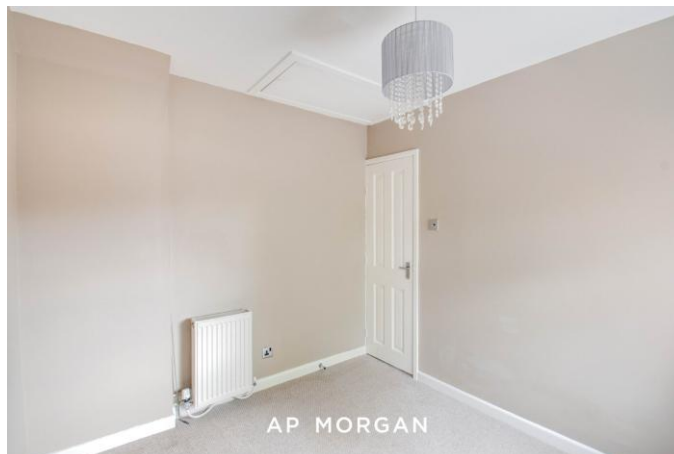
Bedroom Two 9' x 8'4" (2.74m x 2.54m)

EPC Rating: D

Council Tax Band: C (tbc by solicitors).

Tenure: Freehold (tbc by solicitors).

For more information or to arrange a viewing, please call us on 01527 406 956.



How can we help you?

Need a mortgage?

We recommend Wiser Mortgage Advice. They will search the market for you to ensure you get the right lender and mortgage deal. They typically achieve mortgage offers much more quickly than if you were dealing with lenders directly. The initial appointment is free and without obligation. Call us on 01527 406 956, or visit their website for more information: www.wisermortgageadvice.co.uk

Property to sell?

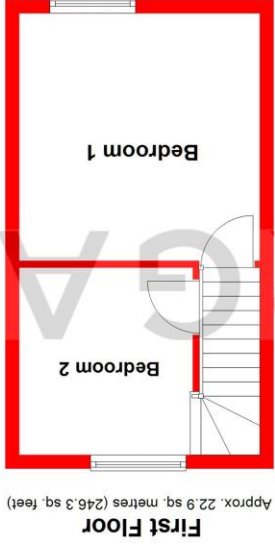
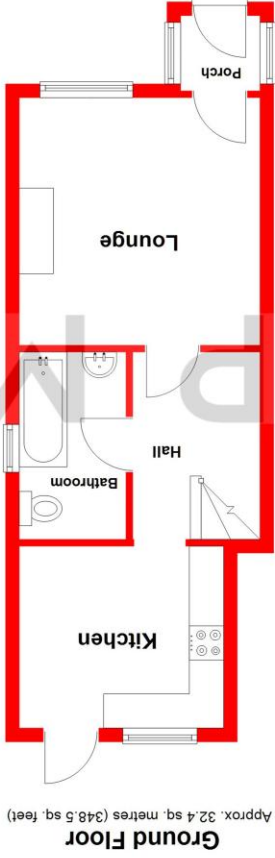
If you need to sell a property in order to buy, you ideally need to be on the market at least (and preferably Sold STC) before viewing, otherwise you may lose out to other buyers when the right property comes along. In these circumstances we can get your property 'live' quickly. Just book a free valuation and we will visit your property and discuss your needs.

Need a solicitor?

A good solicitor can save you literally weeks of time in the buying/selling process, reducing the stress levels of all involved. We will instruct a reputable firm that is competitive on cost and very reliable. Just ask for a quote.

Identity Checks

Estate Agents are required by law to conduct anti-money laundering checks on all those buying a property. We have partnered with a third party supplier to undertake these who will contact you once you have had an offer accepted on a property you wish to buy. The cost of these checks is £99 + VAT per buyer and this is a non-refundable fee. These charges cover the cost of obtaining relevant data, any manual checks and monitoring which might be required. This fee will need to be paid and the checks completed in advance of the issuing of a memorandum of sale on the property you would like to buy.



Total area: approx. 55.3 sq. metres (594.8 sq. feet)

Whilst every attempt has been made to ensure the accuracy of the floorplan contained here, measurements of doors, windows, rooms, and any other items are approximate and no responsibility is taken for any error, omission or mis-statement. This plan is for illustrative purposes only and should be used as such by any prospective purchaser. The services, systems and appliances shown have not been tested and no guarantee as to their operability or efficiency can be given.
Plan produced using PlanLP.

No statement in these details is to be relied upon as representation of fact, and purchasers should satisfy themselves by inspection or otherwise as to the accuracy of the statements contained within. These details do not constitute any part of any offer or contract. AP Morgan and their employees and agents do not have any authority to give any warranty or representation whatsoever in respect of this property. These details and all statements herein are provided without any responsibility on the part of AP Morgan or the vendors. Equipment: AP Morgan has not tested the equipment or central heating system mentioned in these particulars and the purchasers are advised to satisfy themselves as to the working order and condition. Measurements: Great care is taken when measuring, but measurements should not be relied upon for ordering carpets, equipment, etc. The Laws of Copyright protect this material. AP Morgan is the Owner of the copyright. This property sheet forms part of our database and is protected by the database right and copyright laws. No unauthorised copying or distribution without permission.