

AP MORGAN



Oakham Close, Oakenshaw South, Redditch
Offers in the region of £375,000

Features:

- Four bedroom, detached home
- Lounge & family room
- Spacious kitchen/diner
- Family bathroom, ensuite & downstairs WC
- Newly repainted & carpeted (Dec)
- Garden with BBQ & seating area
- Large shed with electrics
- Driveway for 4 cars

Description:

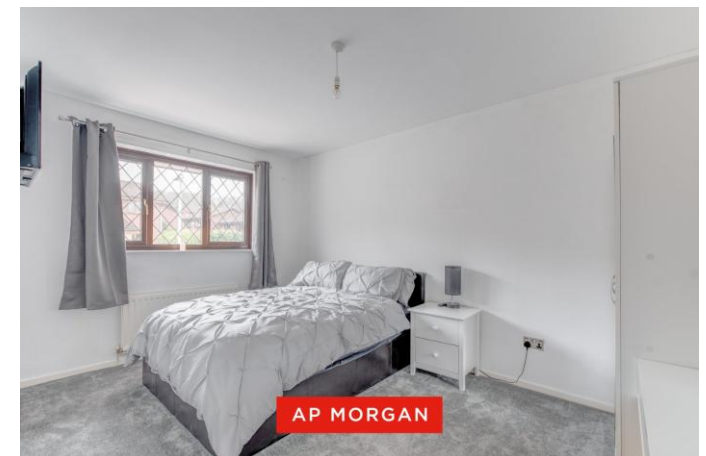
This beautifully presented four-bedroom detached home offers generous living space, modern updates, and an impressive outdoor entertaining area, making it ideal for families and those who love to host.

The ground floor features a spacious lounge, perfect for relaxing evenings, alongside a well-appointed kitchen/diner that provides a sociable hub of the home. A separate family room adds valuable flexibility, whether used as a playroom, home office, or additional reception space. There is also a convenient WC, utility area, and convenient garage/storage.

Upstairs, the property offers four well-proportioned bedrooms. The principal bedroom benefits from its own ensuite, while the remaining bedrooms are served by a modern family bathroom. The layout is ideal for growing families or those needing additional workspace.

Externally, the property truly stands out. The rear garden has been thoughtfully designed for entertaining, featuring a dedicated social gathering area complete with a built-in BBQ—perfect for hosting friends and family. A large shed with its own electrics provides excellent additional storage or potential for a workshop or hobby space. The garden also includes a mix of patio and lawn, offering both practicality and relaxation.

To the front, the home boasts a substantial driveway with space for up to four vehicles, enhanced by new front slabs. The exterior has been well maintained, with recent works including cleaned guttering and updated finishes.



This is a fantastic opportunity to acquire a well-maintained, spacious home with excellent indoor and outdoor living features in a desirable residential setting.

Details:

Hall

Porch 1'9" x 5'11" (0.53m x 1.8m)

Lounge 16'5" x 12'10" (5m x 3.9m) max dimensions

Kitchen/Diner 15'9" x 15'9" (4.8m x 4.8m) max dimensions

Utility Area

WC 6'8" x 2'11" (2.03m x 0.9m)

Family Room 11'10" x 7'8" (3.6m x 2.34m) max dimensions

Garage/Storage

Landing

Bedroom 1 16'1" x 10'10" (4.9m x 3.3m) max dimensions

Ensuite Bathroom 6'4" x 4'9" (1.93m x 1.45m)

Bedroom 2 13'4" x 9'7" (4.06m x 2.92m)

Bedroom 3 9'2" x 9'4" (2.8m x 2.84m)

Bedroom 4 9'1" x 6'6" (2.77m x 1.98m)

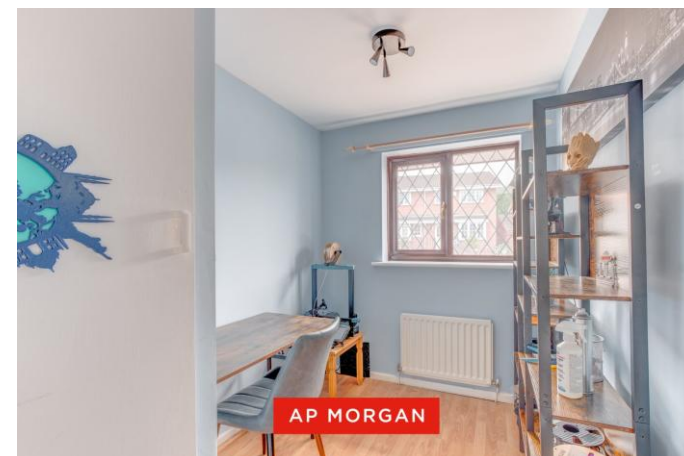
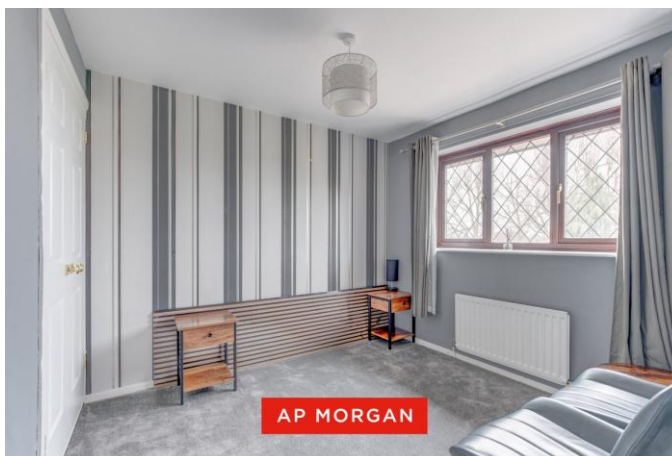
Bathroom 6'4" x 6'5" (1.93m x 1.96m)

EPC Rating: C

Council Tax Band: D (tbc by solicitors).

Tenure: Freehold (tbc by solicitors).

For more information or to arrange a viewing, please call us on 01527 406 956.



How can we help you?

Need a mortgage?

We recommend Wiser Mortgage Advice. They will search the market for you to ensure you get the right lender and mortgage deal. They typically achieve mortgage offers much more quickly than if you were dealing with lenders directly.

The initial appointment is free and without obligation. Call us on 01527 406 956, or visit their website for more information: www.wisermortgageadvice.co.uk

Property to sell?

If you need to sell a property in order to buy, you ideally need to be on the market at least (and preferably Sold STC) before viewing, otherwise you may lose out to other buyers when the right property comes along. In these circumstances we can get your property 'live' quickly. Just book a free valuation and we will visit your property and discuss your needs.

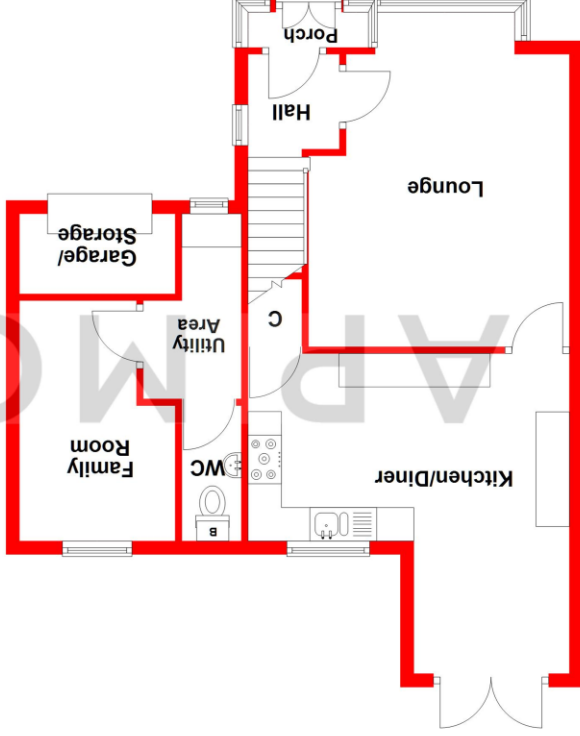
Need a solicitor?

A good solicitor can save you literally weeks of time in the buying/selling process, reducing the stress levels of all involved. We will instruct a reputable firm that is competitive on cost and very reliable. Just ask for a quote.

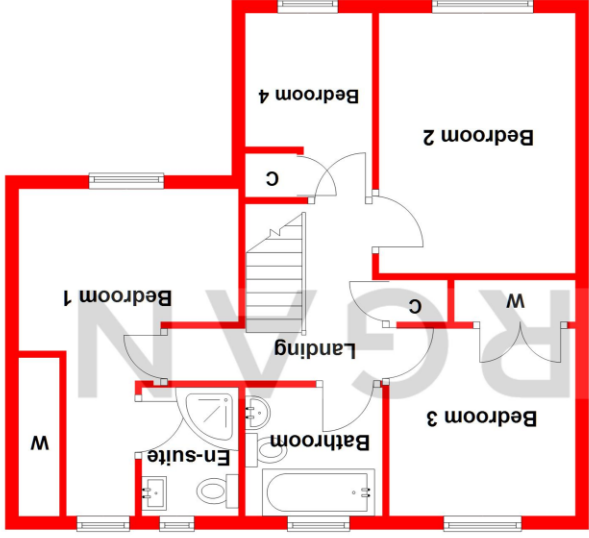
Identity Checks

Estate Agents are required by law to conduct anti-money laundering checks on all those buying a property. We have partnered with a third party supplier to undertake these who will contact you once you have had an offer accepted on a property you wish to buy. The cost of these checks is £99 + VAT per buyer and this is a non-refundable fee. These charges cover the cost of obtaining relevant data, any manual checks and monitoring which might be required. This fee will need to be paid and the checks completed in advance of the issuing of a memorandum of sale on the property you would like to buy.

Ground Floor
Approx. 58.9 sq. metres (634.1 sq. feet)



First Floor
Approx. 53.8 sq. metres (579.5 sq. feet)



Total area: approx. 112.7 sq. metres (1213.5 sq. feet)

Whilst every attempt has been made to ensure the accuracy of the floorplan contained here, measurements of doors, windows, rooms, and any other items are approximate and no responsibility is taken for any error, omission or mis-statement. This plan is for illustrative purposes only and should be used as such by any prospective purchaser. The services, systems and appliances shown have not been tested and no guarantee as to their operability or efficiency can be given.

Plan produced using Planlup.

No statement in these details is to be relied upon as representation of fact, and purchasers should satisfy themselves by inspection or otherwise as to the accuracy of the statements contained within. These details do not constitute any part of any offer or contract. AP Morgan and their employees and agents do not have any authority to give any warranty or representation whatsoever in respect of this property. These details and all statements herein are provided without any responsibility on the part of AP Morgan or the vendors. Equipment: AP Morgan has not tested the equipment or central heating system mentioned in these particulars and the purchasers are advised to satisfy themselves as to the working order and condition. Measurements: Great care is taken when measuring, but measurements should not be relied upon for ordering carpets, equipment, etc. The Laws of Copyright protect this material. AP Morgan is the Owner of the copyright. This property sheet forms part of our database and is protected by the database right and copyright laws. No unauthorised copying or distribution without permission.