

**AP MORGAN**



**Other Road, Redditch, Worcestershire**  
£725 per month

**Features:**

- Ground floor apartment
- One double bedroom
- Spacious lounge
- Well-fit kitchen
- On-road parking
- Rear garden
- Newly refurbished
- Sought-after location

**Description:**

Introducing to the rental market this ground-floor apartment, offering one generously sized double bedroom, a spacious lounge, a newly fitted kitchen and bathroom, and a sizeable rear garden, with on-road parking at the front. The property is ideally situated near Redditch Town Centre.

On arrival, the property offers on-road parking at the front, with sufficient space for both residents and visitors. A path leads up to the entrance, while an alleyway down the side provides access to a gate leading to the rear garden.

Upon entry, you are welcomed into a porch, which leads through to the entrance hall. To the left is the lounge, providing a great space for relaxation and entertaining, featuring a large bay window that allows plenty of natural light to flow through. Continuing along the hall leads to the bedroom, a generously sized double with ample space for storage units. Further along, a secondary section of the hall features a door opening onto the rear garden.

At the end of the hall is the kitchen, newly fitted with modern cupboards and worktops, an integrated oven with a four-burner gas hob and extractor hood, as well as under-counter space for utility appliances. The kitchen also leads into the bathroom, which is fitted with a toilet, wash basin, and shower cubicle.

The rear garden is accessed via the side path and opens onto a lawned area with an outbuilding, ideal for garden storage, as well as a gate providing access to the front of the property.



This property is situated in an extremely convenient area of Redditch, close to Trafford Retail Park, which offers a range of restaurants, leisure facilities, and supermarkets. The Kingfisher Shopping Centre and surrounding shops are also just a short distance away. Ideal for commuters, the location benefits from excellent public transport links, with both bus and train stations nearby, as well as easy access to the M5 and M42 motorways.

**Details:**

**Porch**

**Entrance Hall**

**Lounge** 10'11" x 11'11" (3.33m x 3.63m)

**Bedroom** 11'5" x 12'8" (3.48m x 3.86m)

**Hall**

**Kitchen** 10'9" x 7'10" (3.28m x 2.4m)

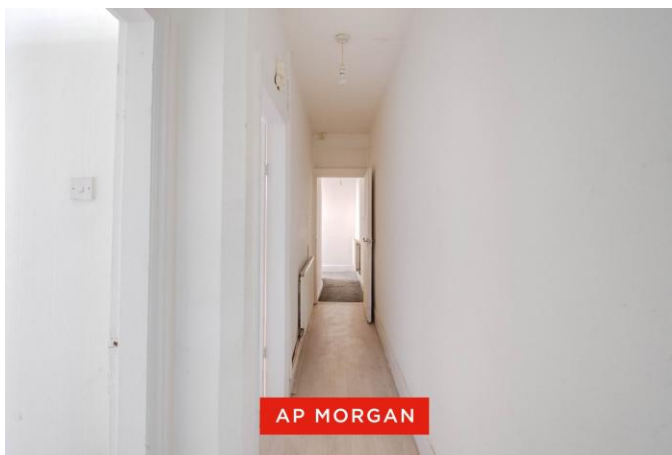
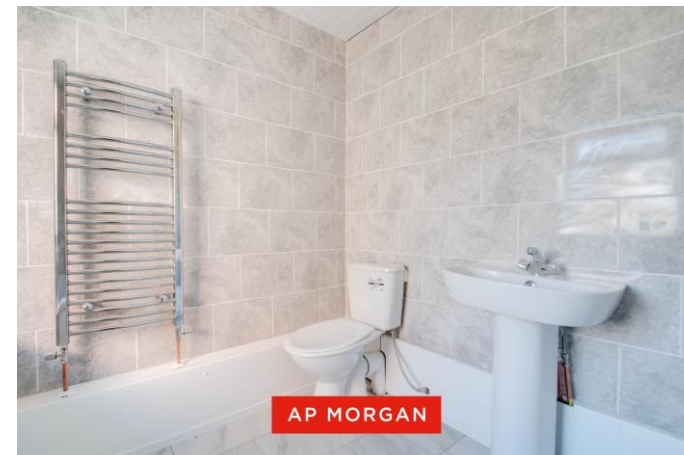
**Bathroom** 7'1" x 7'11" (2.16m x 2.41m)

**EPC Rating:** D

**Council Tax Band:** A (tbc by solicitors).

**Tenure:** To be advised (tbc by solicitors).

For more information or to arrange a viewing, please call us on 01527 406 956.



## How can we help you?

### Need a mortgage?

We recommend Wiser Mortgage Advice. They will search the market for you to ensure you get the right lender and mortgage deal. They typically achieve mortgage offers much more quickly than if you were dealing with lenders directly. The initial appointment is free and without obligation. Call us on 01527 406 956, or visit their website for more information: [www.wisermortgageadvice.co.uk](http://www.wisermortgageadvice.co.uk)

### Property to sell?

If you need to sell a property in order to buy, you ideally need to be on the market at least (and preferably Sold STC) before viewing, otherwise you may lose out to other buyers when the right property comes along. In these circumstances we can get your property 'live' quickly. Just book a free valuation and we will visit your property and discuss your needs.

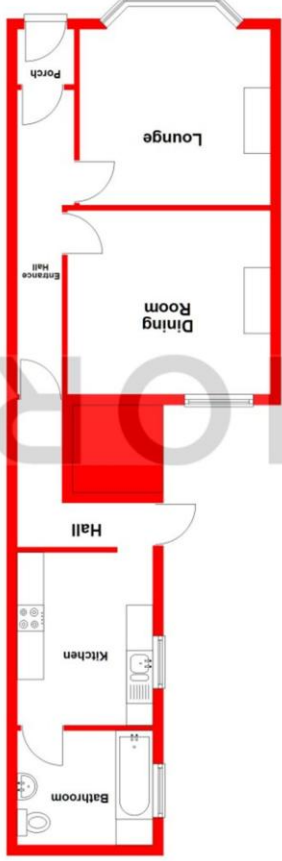
### Need a solicitor?

A good solicitor can save you literally weeks of time in the buying/selling process, reducing the stress levels of all involved. We will instruct a reputable firm that is competitive on cost and very reliable. Just ask for a quote.

### Need a removal company and storage?

A professional removal company takes the stress out of moving, knowing that your belongings are safe and insured far outweighs any small savings by trying to do it yourself or using a man-and-a-van service. We work closely with and recommend Cube Removals as the leading local firm. For peace of mind and a reliable service call them on 0800 193 0000 or visit their website, [cuberemovals.co.uk](http://cuberemovals.co.uk), to arrange a survey.

Ground Floor  
Approx. 51.1 sq metres (550.5 sq. feet)



Total area: approx. 51.1 sq. metres (550.5 sq. feet)

This plan is for illustrative purposes only and should be used as such by any prospective purchaser. The services, systems and appliances shown have not been tested and no guarantee as to their operability or efficiency can be given. We make every attempt to ensure the accuracy of the floorplan contained here, but measurements should not be relied upon for ordering carpets, equipment, etc. The Laws of Copyright protect this material. AP Morgan is the Owner of the

any part of contract. AP Morgan and their employees and agents do not have any authority to give any warranty or representation whatsoever in respect of this property. These details and all statements herein are provided without any responsibility on the part of AP Morgan or the vendors. Equipment: AP Morgan has not tested the equipment or central heating system mentioned in these particulars and the purchasers are advised to satisfy themselves as to the working order and condition. Measurements: Great care is taken when measuring, but measurements should not be relied upon for ordering carpets, equipment, etc. The Laws of Copyright protect this material. AP Morgan is the Owner of the copyright. This property sheet forms part of our database and is protected by the database right and copyright laws. No unauthorised copying or distribution without permission.