

**AP MORGAN**



**Prospect Road North, Lakeside, Redditch**  
£1,575 per month

**Features:**

- Five bedrooms over three floors
- Spacious lounge and dining room
- Kitchen with garden access
- Ground floor bedroom with en-suite
- First floor family bathroom
- Large second floor bedroom
- Low-maintenance rear garden
- Gated rear access with off-road parking

**Description:**

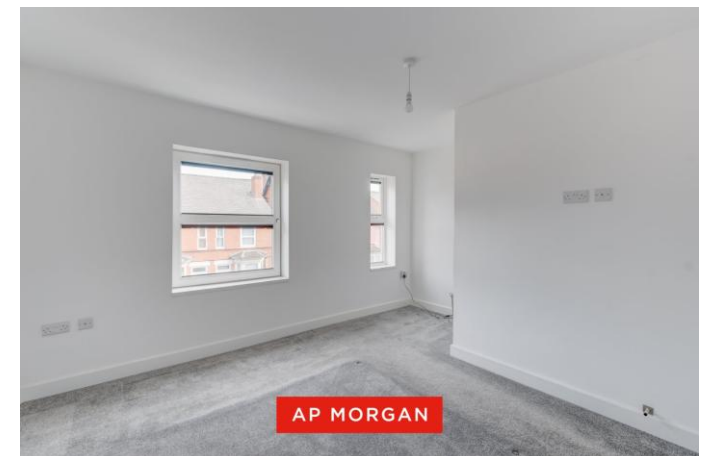
This deceptively spacious and versatile five-bedroom property offers generous accommodation arranged over three floors. Situated in a convenient residential location, the property benefits from a practical layout and a private rear garden with vehicular access.

The ground floor comprises a welcoming entrance hall leading into the lounge and separate dining room, providing ample space for both relaxing and entertaining. To the rear, the kitchen is well-positioned with access to the garden, while an additional bedroom with en-suite facilities offers flexibility for guests or multi-generational living.

On the first floor, there are three well-proportioned bedrooms along with a family bathroom, all accessed from a central landing. The second floor provides a further spacious bedroom, ideal as a principal suite, home office or hobby room, benefiting from added privacy.

Externally, the property features a low-maintenance rear garden mainly laid to gravel, offering excellent potential for outdoor seating or further landscaping. A key highlight is the rear access via a secure gate, allowing for off-road parking—an increasingly valuable feature for properties of this type.

This property offers a fantastic combination of space, flexibility and practicality, with the added advantage of rear vehicular access and parking.



**Details:**

**Hall**

**Lounge** 15' x 9'1" (4.57m x 2.77m)

**Dining Room** 11'10" x 13'7" (3.6m x 4.14m)

**Kitchen** 15'3" x 8'2" (4.65m x 2.5m)

**Bedroom 5** 8'7" x 7'11" (2.62m x 2.41m)

**Ensuite** 5'10" x 4'9" (1.78m x 1.45m)

**Landing**

**Bedroom 1** 11'8" x 13'7" (3.56m x 4.14m) max dimensions

**Bedroom 2** 13'4" x 8' (4.06m x 2.44m)

**Bedroom 3** 8'5" x 7'4" (2.57m x 2.24m)

**Bathroom** 6'2" x 6'9" (1.88m x 2.06m)

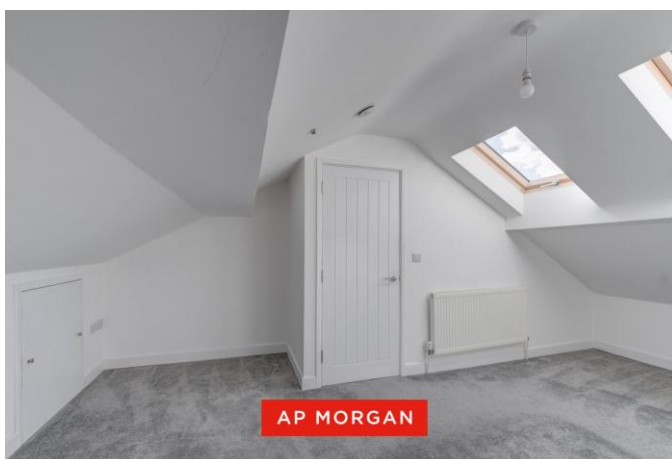
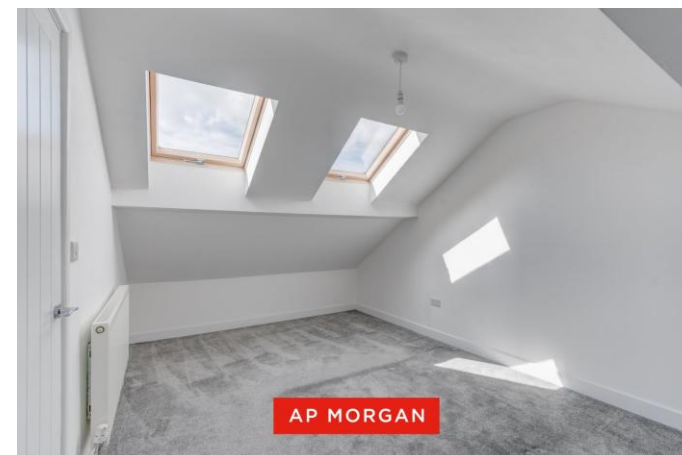
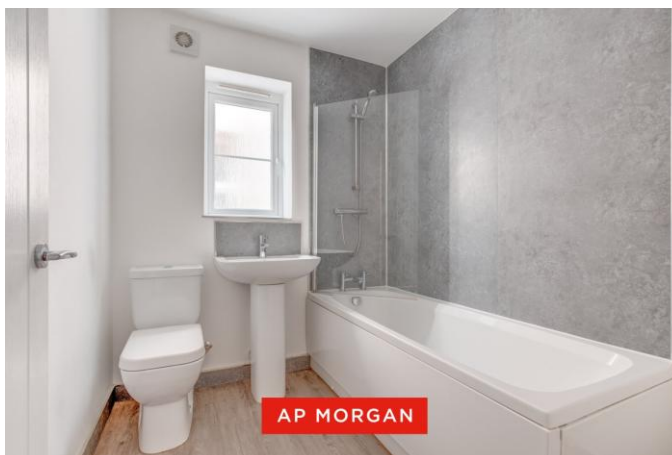
**Bedroom 4** 18'1" x 13'6" (5.5m x 4.11m) max dimensions

**EPC Rating:** C

**Council Tax Band:** (tbc by solicitors).

**Tenure:** To be advised (tbc by solicitors).

For more information or to arrange a viewing, please call us on 01527 406 956.



## How can we help you?

### Need a mortgage?

We recommend Wiser Mortgage Advice. They will search the market for you to ensure you get the right lender and mortgage deal. They typically achieve mortgage offers much more quickly than if you were dealing with lenders directly.

The initial appointment is free and without obligation. Call us on 01527 406 956, or visit their website for more information: [www.wisermortgageadvice.co.uk](http://www.wisermortgageadvice.co.uk)

### Property to sell?

If you need to sell a property in order to buy, you ideally need to be on the market at least (and preferably Sold STC) before viewing, otherwise you may lose out to other buyers when the right property comes along. In these circumstances we can get your property 'live' quickly. Just book a free valuation and we will visit your property and discuss your needs.

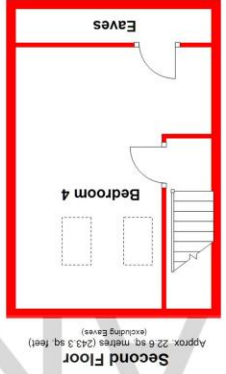
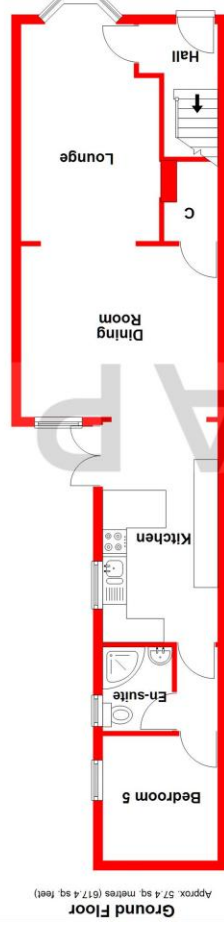
### Need a solicitor?

A good solicitor can save you literally weeks of time in the buying/selling process, reducing the stress levels of all involved. We will instruct a reputable firm that is competitive on cost and very reliable. Just ask for a quote.

### Need a removal company and storage?

A professional removal company takes the stress out of moving, knowing that your belongings are safe and insured far outweighs any small savings by trying to do it yourself or using a man-and-a-van service. We work closely with and recommend Cube Removals as the leading local firm. For peace of mind and a reliable service call them on 0800 193 0000 or visit their website, [cuberemovals.co.uk](http://cuberemovals.co.uk), to arrange a survey.

No statement in these details is to be relied upon as representation of fact, and purchasers should satisfy themselves by inspection or otherwise as to the accuracy of the statements contained within. These details do not constitute any part of any offer or contract. AP Morgan and their employees and agents do not have any authority to give any warranty or representation whatsoever in respect of this property. These details and all statements herein are provided without any responsibility on the part of AP Morgan or the vendors. Equipment: AP Morgan has not tested the equipment or central heating system mentioned in these particulars and the purchasers are advised to satisfy themselves as to the working order and condition. Measurements: Great care is taken when measuring, but measurements should not be relied upon for ordering carpets, equipment, etc. The Laws of Copyright protect this material. AP Morgan is the Owner of the copyright. This property sheet forms part of our database and is protected by the database right and copyright laws. No unauthorised copying or distribution without permission.



Total area: approx. 125.4 sq. metres (1349.8 sq. feet)

Whilst every attempt has been made to ensure the accuracy of the floorplan contained here, measurements of doors, windows, rooms, and any other items are approximate and no responsibility is taken for any error, omission or mis-statement. This plan is for illustrative purposes only and should be used as such by any prospective purchaser. The services, systems and appliances shown have not been tested and no guarantee as to their operability or efficiency can be given.  
Plan produced using Planlup.