

AP MORGAN



Worcester Road, Stoke Heath, Bromsgrove
Offers in the region of £650,000

Features:

- Extensive detached family home
- Four spacious double bedrooms
- Fantastic open-plan kitchen/diner
- Generous lounge space
- Handy utility and study spaces
- Beautifully landscaped rear garden
- Spacious driveway and single garage
- Sought-after location with field views

Description:

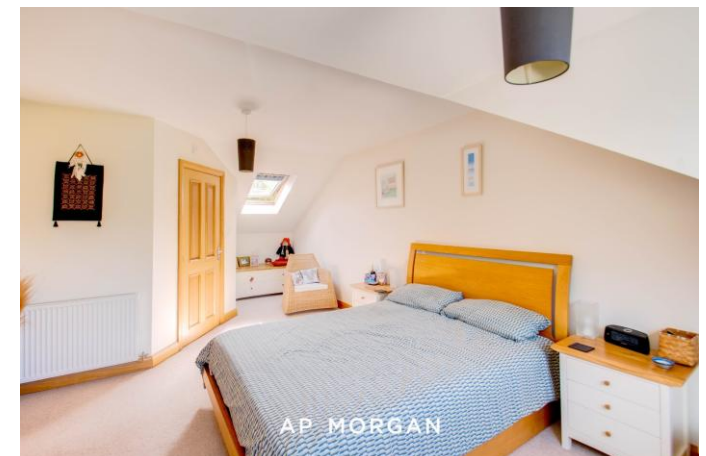
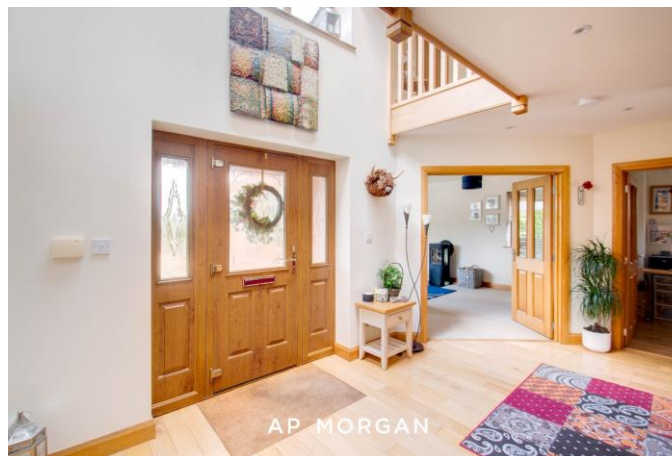
Welcoming you to this extensive detached family home, offering four generously sized double bedrooms, two with en-suite facilities, a spacious lounge, a well-fitted open-plan kitchen/diner, a fantastic rear garden, and a multi-car driveway with a single garage, situated in the desirable location of Stoke Heath, Bromsgrove.

On arrival, the property welcomes you via a driveway bordered by fences and hedges on either side, adding greenery and additional privacy to the frontage. The driveway provides parking for multiple vehicles, making it convenient for both residents and visitors. A gate to the rear garden is located at the side of the property, the garage is positioned to the right, and the covered entrance sits centrally.

Upon entering, the ground floor opens into a spacious hallway comprising stairs rising to the first floor, ample space for coat and shoe storage, a storage cupboard, a WC fitted with a toilet and wash basin, and access to the remaining ground-floor rooms. Immediately to the left is the lounge, a generous space for relaxation and family entertainment, with surrounding windows creating a bright and airy atmosphere.

Adjacent to the lounge is the study, an ideal space for a desk and storage units. Next door is the open-plan kitchen/diner, which initially provides ample space for a family dining table and benefits from French doors opening onto the rear garden. The kitchen is fitted with ample storage and worktop space, an integrated oven, a five-burner gas hob with extractor hood, and space for a freestanding fridge/freezer. A further door on the opposite side of the kitchen leads back into the entrance hall. The kitchen also provides access to the utility room, which offers additional worktop and storage space, room for freestanding appliances, and doors leading to both the garage and the rear garden.

The first floor leads onto a spacious landing featuring a striking open aspect to the front, with a large window overlooking the driveway and railings surrounding the open void, creating an impressive sense of space extending from the ground floor to the ceiling above. The landing provides access to the principal bedroom, a generous double, and bedroom two, another spacious double. Both benefit from en-suite shower rooms comprising a toilet, wash basin, and shower cubicle. Bedrooms three and four are also well-proportioned double bedrooms, each offering ample space for furnishings and storage. The family bathroom is also located on the first floor and comprises a toilet, wash basin, and bathtub.



The rear garden opens onto a patio area, providing a fantastic space for outdoor furniture, al fresco dining, and entertaining. Steps lead up to a well-maintained lawn, with decking areas in both rear corners offering additional seating or storage space. Mature hedges and shrubbery border the garden, while a central tree provides an attractive focal point.

The property occupies a prime location on the outskirts of Stoke Heath, close to well-regarded local schools, as well as the prestigious Bromsgrove School and the historic Avoncroft Museum of Historic Buildings. Large supermarkets are easily accessible within a mile of the property, while Bromsgrove town centre is within easy reach, offering a wide range of shopping, amenities, and leisure facilities. The property also benefits from excellent transport links, with convenient access to the M5 and M42 motorways for commuting and travel to surrounding areas.

Details:

Entrance Hall 11'10" x 16'8" (3.6m x 5.08m) Both Max

Lounge 19'5" x 12'10" (5.92m x 3.9m)

Kitchen/Diner 11'11" x 27'1" (3.63m x 8.26m)

Utility Room 7'10" x 8'6" (2.4m x 2.6m)

Study 6'1" x 7'2" (1.85m x 2.18m)

WC

Garage 18'8" x 8'9" (5.7m x 2.67m)

Landing

Master Bedroom 14'8" x 11'10" (4.47m x 3.6m) Both Max

En-suite 8'7" x 6'6" (2.62m x 1.98m)

Bedroom Two 11'7" x 11'9" (3.53m x 3.58m)

En-suite 4'9" x 6'8" (1.45m x 2.03m)

Bedroom Three 11'11" x 12'10" (3.63m x 3.9m)

Bedroom Four 10' x 10'5" (3.05m x 3.18m)

Bathroom 8'9" x 7'3" (2.67m x 2.2m)

EPC Rating: C

Council Tax Band: F (tbc by solicitors).

Tenure: Freehold (tbc by solicitors).

For more information or to arrange a viewing, please call us on 01527 910 300.



How can we help you?

Need a mortgage?

We recommend Wiser Mortgage Advice. They will search the market for you to ensure you get the right lender and mortgage deal. They typically achieve mortgage offers much more quickly than if you were dealing with lenders directly. The initial appointment is free and without obligation. Call us on 01527 910 300, or visit their website for more information: www.wisermortgageadvice.co.uk

Property to sell?

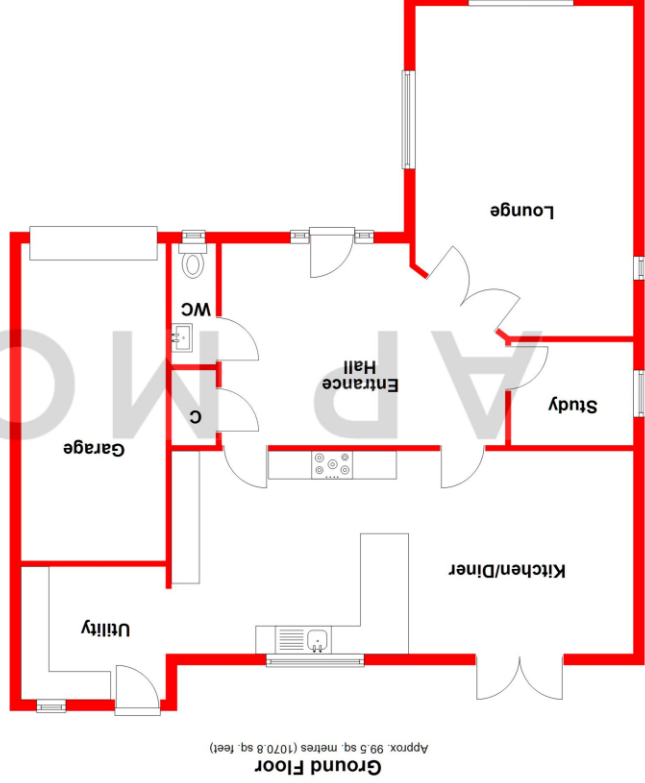
If you need to sell a property in order to buy, you ideally need to be on the market at least (and preferably Sold STC) before viewing, otherwise you may lose out to other buyers when the right property comes along. In these circumstances we can get your property 'live' quickly. Just book a free valuation and we will visit your property and discuss your needs.

Need a solicitor?

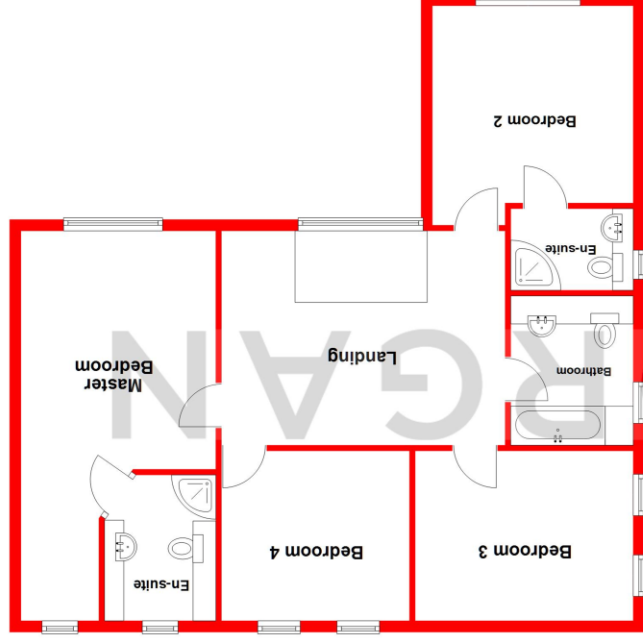
A good solicitor can save you literally weeks of time in the buying/selling process, reducing the stress levels of all involved. We will instruct a reputable firm that is competitive on cost and very reliable. Just ask for a quote.

Identity Checks

Estate Agents are required by law to conduct anti-money laundering checks on all those buying a property. We have partnered with a third party supplier to undertake these who will contact you once you have had an offer accepted on a property you wish to buy. The cost of these checks is £99 + VAT per buyer and this is a non-refundable fee. These charges cover the cost of obtaining relevant data, any manual checks and monitoring which might be required. This fee will need to be paid and the checks completed in advance of the issuing of a memorandum of sale on the property you would like to buy.



Ground Floor
Approx. 99.5 sq. metres (1070.8 sq. feet)



First Floor
Approx. 91.8 sq. metres (987.9 sq. feet)

Total area: approx. 191.3 sq. metres (2058.7 sq. feet)

Whilst every attempt has been made to ensure the accuracy of the floorplan contained here, measurements of doors, windows, rooms, and any other items are approximate and no responsibility is taken for any error, omission or mis-statement. This plan is for illustrative purposes only and should be used as such by any prospective purchaser. The services, systems and appliances shown have not been tested and no guarantee as to their operability or efficiency can be given.
Plan produced using PlanUp.

No statement in these details is to be relied upon as representation of fact, and purchasers should satisfy themselves by inspection or otherwise as to the accuracy of the statements contained within. These details do not constitute any part of any offer or contract. AP Morgan and their employees and agents do not have any authority to give any warranty or representation whatsoever in respect of this property. These details and all statements herein are provided without any responsibility on the part of AP Morgan or the vendors. Equipment: AP Morgan has not tested the equipment or central heating system mentioned in these particulars and the purchasers are advised to satisfy themselves as to the working order and condition. Measurements: Great care is taken when measuring, but measurements should not be relied upon for ordering carpets, equipment, etc. The Laws of Copyright protect this material. AP Morgan is the Owner of the copyright. This property sheet forms part of our database and is protected by the database right and copyright laws. No unauthorised copying or distribution without permission.