



AP MORGAN

Rabbit Croft, Droitwich
Guide Price £290,000

Features:

- Three double bedrooms
- Spacious lounge
- Generous kitchen
- Ground floor WC
- En-suite shower room
- Family bathroom
- Low maintenance rear garden
- Off-street parking for multiple vehicles

Description:

This beautifully presented, three-bedroom, mid-terraced property in Droitwich presents a spacious lounge, generous kitchen, ground floor WC, en-suite shower room, family bathroom, a low maintenance rear garden, off-street parking and is well positioned for amenities.

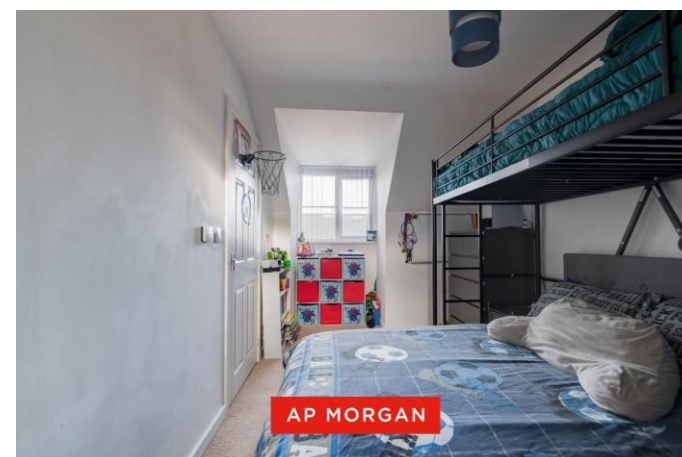
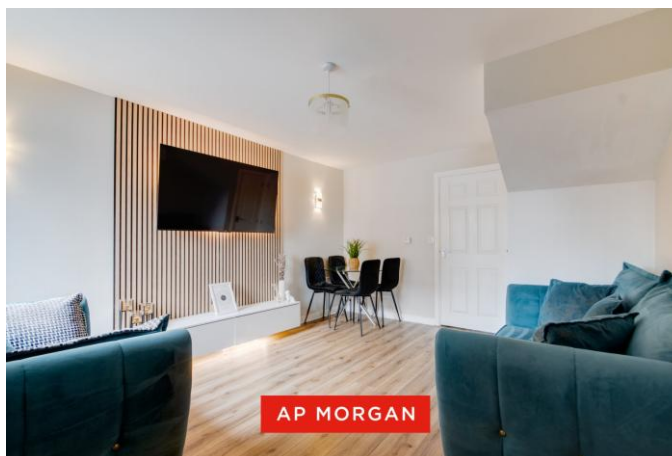
Approaching the property there is a tarmac drive allowing for parking multiple vehicles with power/wiring for an at home EV charging point. There are flower beds and bushes giving space for planting with a paved path allowing access to the front door and a side alley giving rear garden access.

Entering the property to the porch, there is space for removing outdoor footwear and jackets; ultimately leading to the lounge, this is spacious and presents room for multiple suites and a dining table and chairs. The breakfast kitchen is generously sized and hosts ample counterspace with an integrated sink, electric oven, gas hob and space/plumbing for freestanding appliances. The ground floor is completed by a WC.

Ascending to the first floor, Bedroom Two is a spacious double looking to the front aspect, Bedroom Three is a similarly sized double looking to the rear aspect, the first floor is completed by a contemporary family bathroom presenting a washbasin, WC and bath/shower.

Continuing to the roof room, Bedroom One presents a large double looking to the front aspect, providing space for freestanding furniture and an adjoining en-suite shower room presenting a washbasin, WC and shower. Additionally, there is access to a storage cupboard on the landing.

The garden opens to a paved patio offering space for outdoor furniture and external storage, continuing to an artificial lawn, the garden is low maintenance while allowing plenty of room for outdoor activities. The garden is bordered by wooden panel fencing and allows rear access through an alley and rear gate.



Situated in Droitwich, the property is approximately 1.9 miles from Droitwich town centre and is a short drive from amenities such as shops, restaurants, supermarkets and local schooling. Additionally, the M5 motorway is easily accessed.

Details:

Porch

Lounge 14'8" x 11'8" (4.47m x 3.56m) Both Max

Hall

Ground Floor WC 3'8" x 4'4" (1.12m x 1.32m)

Breakfast Kitchen 8'9" x 11'8" (2.67m x 3.56m)

Landing

Bedroom Two 10'6" x 11'8" (3.2m x 3.56m) Both Max

Bedroom Three 8'11" x 11'8" (2.72m x 3.56m)

Bathroom 7'8" x 5'7" (2.34m x 1.7m)

Landing

Bedroom One 15'5" x 8'3" (4.7m x 2.51m) Both Max

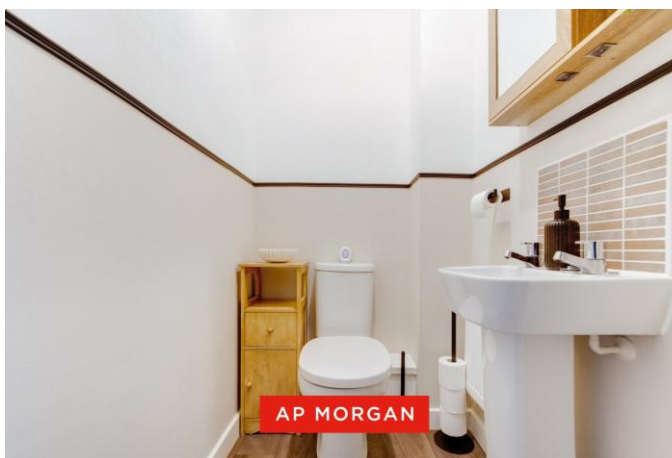
En-suite Shower Room 5' x 10'11" (1.52m x 3.33m)

EPC Rating: B

Council Tax Band: C (tbc by solicitors).

Tenure: Freehold (tbc by solicitors).

For more information or to arrange a viewing, please call us on 01527 910 300.



How can we help you?

Need a mortgage?

We recommend Wisser Mortgage Advice. They will search the market for you to ensure you get the right lender and mortgage deal. They typically achieve mortgage offers much more quickly than if you were dealing with lenders directly. The initial appointment is free and without obligation. Call us on 01527 910 300, or visit their website for more information: www.wissermortgageadvice.co.uk

Property to sell?

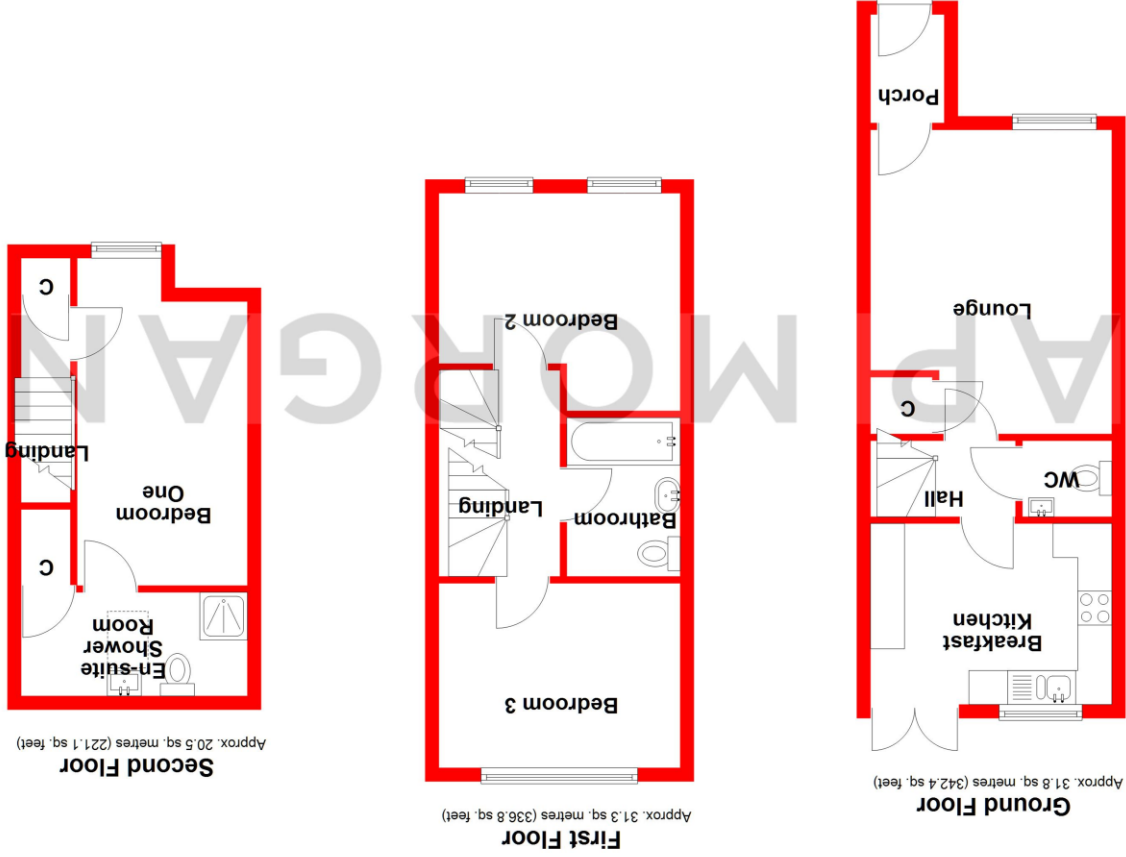
If you need to sell a property in order to buy, you ideally need to be on the market at least (and preferably Sold STC) before viewing, otherwise you may lose out to other buyers when the right property comes along. In these circumstances we can get your property 'live' quickly. Just book a free valuation and we will visit your property and discuss your needs.

Need a solicitor?

A good solicitor can save you literally weeks of time in the buying/selling process, reducing the stress levels of all involved. We will instruct a reputable firm that is competitive on cost and very reliable. Just ask for a quote.

Identity Checks

Estate Agents are required by law to conduct anti-money laundering checks on all those buying a property. We have partnered with a third party supplier to undertake these who will contact you once you have had an offer accepted on a property you wish to buy. The cost of these checks is £39 + VAT per buyer and this is a non-refundable fee. These charges cover the cost of obtaining relevant data, any manual checks and monitoring which might be required. This fee will need to be paid and the checks completed in advance of the issuing of a memorandum of sale on the property you would like to buy.



Total area: approx. 83.6 sq. metres (900.3 sq. feet)

Whilst every attempt has been made to ensure the accuracy of the floorplan contained here, measurements of doors, windows, rooms, and any other items are approximate and no responsibility is taken for any error, omission or mis-statement. This plan is for illustrative purposes only and should be used as such by any prospective purchaser. The services, systems and appliances shown have not been tested and no guarantee as to their operability or efficiency can be given.
Plan produced using Planlup.

No statement in these details is to be relied upon as representation of fact, and purchasers should satisfy themselves by inspection or otherwise as to the accuracy of the statements contained within. These details do not constitute any part of any offer or contract. AP Morgan and their employees and agents do not have any warranty or representation whatsoever in respect of this property. These details and all statements herein are provided without any responsibility on the part of AP Morgan or the vendors. Equipment: AP Morgan has not tested the equipment or central heating system mentioned in these particulars and the purchasers are advised to satisfy themselves as to the working order and condition. Measurements: Great care is taken when measuring, but measurements should not be relied upon for ordering carpets, equipment, etc. The Laws of Copyright protect this material. AP Morgan is the Owner of the copyright. This property sheet forms part of our database and is protected by the database right and copyright laws. No unauthorised copying or distribution without permission.