

AP MORGAN



The Flats, Bromsgrove, Worcestershire
Asking Price £335,000

Features:

- Modern detached family home
- Three double bedrooms
- Stylish fitted breakfast kitchen
- Generous through lounge/dining room
- Modern family bathroom & ground floor w/c
- Low maintenance rear garden
- Driveway
- Convenient location for town centre & schooling

Description:

A well-presented three double bedroom detached home, located within the popular Sidemoor area of Bromsgrove, conveniently positioned close to the town centre, well-regarded schooling, local amenities, and transport links.

The accommodation is arranged to provide practical and well-balanced living space. An entrance hall welcomes you into the property and benefits from an understairs storage cupboard, along with a generous ground floor guest WC. A spacious lounge and dining area offers an excellent family living space, enjoying a bay window to the front and French doors to the rear garden, allowing for plenty of natural light. The lounge flows seamlessly into the breakfast kitchen, which is fitted with a modern range of units and integrated appliances including a fridge/freezer, oven, gas hob, washing machine, and concealed waste bin, with the addition of a breakfast bar creating an ideal space for casual dining.

To the first floor, the landing provides access to three well-proportioned double bedrooms. The principal bedroom benefits from fitted wardrobes, while bedroom two is also a comfortable double. Bedroom three includes built-in cupboard storage. A contemporary family bathroom completes the accommodation, featuring a bath with overhead shower, wash hand basin, and WC.

Externally, the property enjoys a well-maintained and low-maintenance rear garden, ideal for summer entertaining, with a paved patio seating area, lawn, planted borders, garden shed, and gated side access. To the front, a good sized driveway provides off-road parking for up to three vehicles.



The property is particularly well located for Meadow First School and the Princess of Wales Community Hospital, with Bromsgrove town centre close by offering a wide range of shops, leisure facilities, and transport connections. Excellent road links are also available via the M5, providing convenient access to Birmingham and the surrounding areas.

Details:

Entrance Hall

W/C 5'5" x 4' (1.65m x 1.22m)

Lounge/Diner 22' x 10'4" (6.7m x 3.15m)

Kitchen/Breakfast Room 11'9" x 9'7" (3.58m x 2.92m)

First Floor Landing

Bedroom 1 11'4" x 9'4" (3.45m x 2.84m)

Bedroom 2 10'3" x 9'4" (3.12m x 2.84m)

Bedroom 3 9'4" x 8'7" (2.84m x 2.62m)

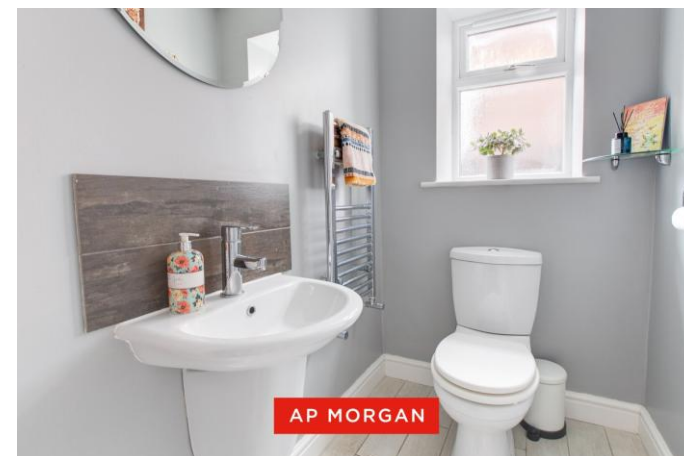
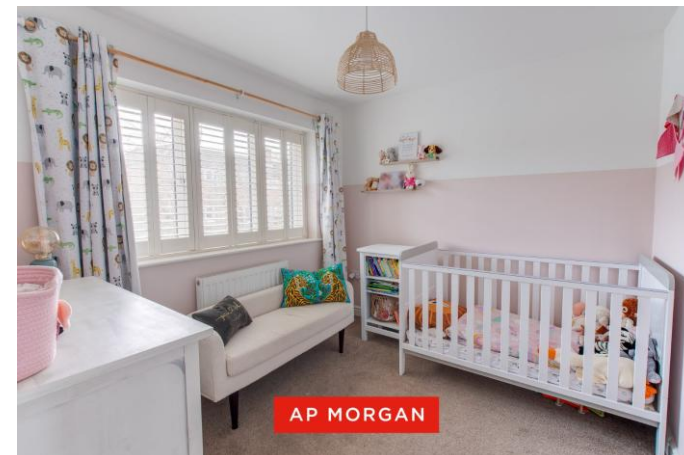
Bathroom 6'7" x 6'5" (2m x 1.96m)

EPC Rating: C

Council Tax Band: C (tbc by solicitors).

Tenure: Freehold (tbc by solicitors).

For more information or to arrange a viewing, please call us on 01527 910 300.



How can we help you?

Need a mortgage?

We recommend Wiser Mortgage Advice. They will search the market for you to ensure you get the right lender and mortgage deal. They typically achieve mortgage offers much more quickly than if you were dealing with lenders directly. The initial appointment is free and without obligation. Call us on 01527 910 300, or visit their website for more information: www.wisermortgageadvice.co.uk

Property to sell?

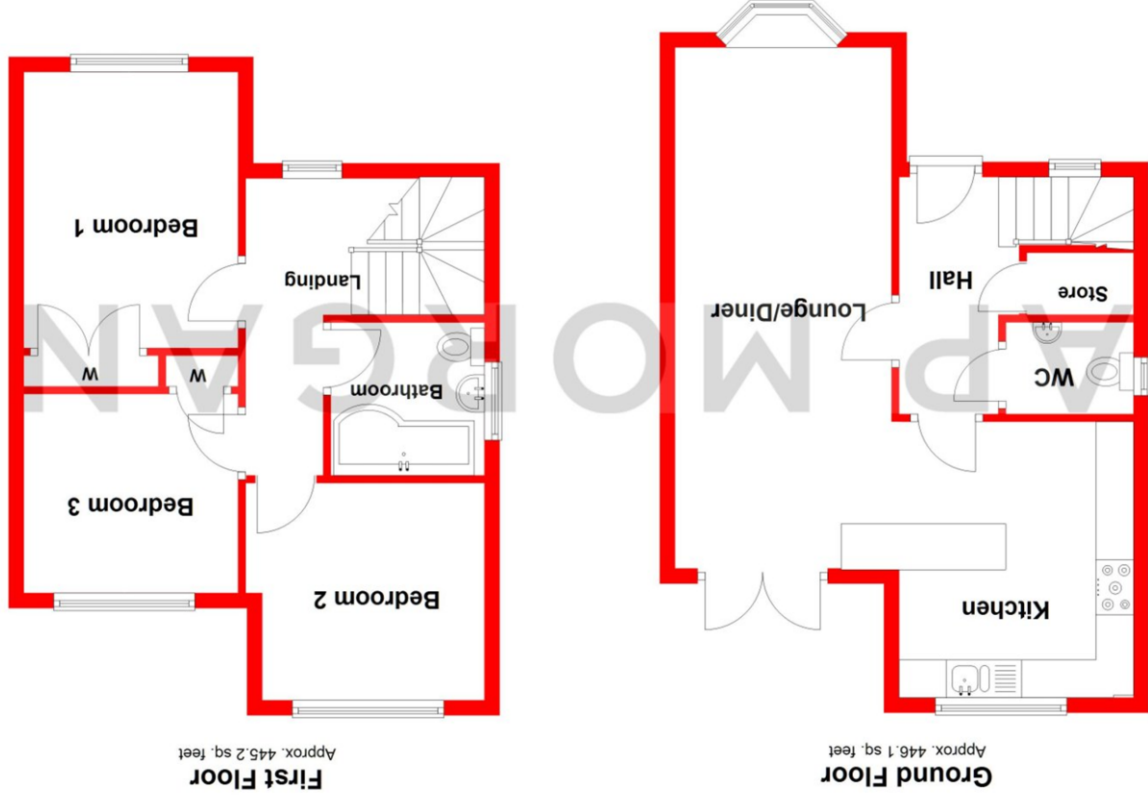
If you need to sell a property in order to buy, you ideally need to be on the market at least (and preferably Sold STC) before viewing, otherwise you may lose out to other buyers when the right property comes along. In these circumstances we can get your property 'live' quickly. Just book a free valuation and we will visit your property and discuss your needs.

Need a solicitor?

A good solicitor can save you literally weeks of time in the buying/selling process, reducing the stress levels of all involved. We will instruct a reputable firm that is competitive on cost and very reliable. Just ask for a quote.

Identity Checks

Estate Agents are required by law to conduct anti-money laundering checks on all those buying a property. We have partnered with a third party supplier to undertake these who will contact you once you have had an offer accepted on a property you wish to buy. The cost of these checks is £99 + VAT per buyer and this is a non-refundable fee. These charges cover the cost of obtaining relevant data, any manual checks and monitoring which might be required. This fee will need to be paid and the checks completed in advance of the issuing of a memorandum of sale on the property you would like to buy.



Whilst every attempt has been made to ensure the accuracy of the floorplan contained here, measurements of doors, windows, rooms, and any other items are approximate and no responsibility is taken for any error, omission or mis-statement. This plan is for illustrative purposes only and should be used as such by any prospective purchaser. The services, systems and appliances shown have not been tested and no guarantee as to their operability or efficiency can be given.

Plan produced using PlanUp.

No statement in these details is to be relied upon as representation of fact, and purchasers should satisfy themselves by inspection or otherwise as to the accuracy of the statements contained within. These details do not constitute any part of any offer or contract. AP Morgan and their employees and agents do not have any authority to give any warranty or representation whatsoever in respect of this property. These details and all statements herein are provided without any responsibility on the part of AP Morgan or the vendors. Equipment: AP Morgan has not tested the equipment or central heating system mentioned in these particulars and the purchasers are advised to satisfy themselves as to the working order and condition. Measurements: Great care is taken when measuring, but measurements should not be relied upon for ordering carpets, equipment, etc. The Laws of Copyright protect this material. AP Morgan is the Owner of the copyright. This property sheet forms part of our database and is protected by the database right and copyright laws. No unauthorised copying or distribution without permission.