

AP MORGAN



Barcheston Road, Weoley Castle, Birmingham
Asking Price £210,000

Features:

- Semi-detached property
- Two bedrooms
- Generous sized lounge
- Well-fit kitchen
- Spacious rear garden
- On-street parking

Description:

Introducing this semi-detached home situated in Weoley Castle, Birmingham, offering two bedrooms, a spacious lounge, a well-fitted kitchen, a great rear garden, and on-street parking.

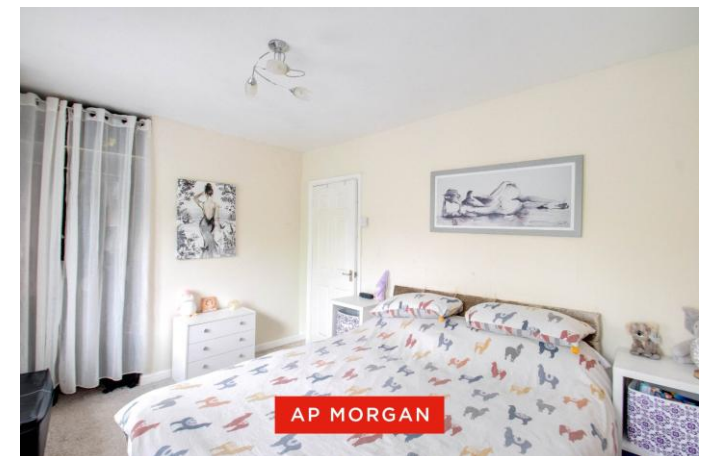
On arrival, the property is bordered by hedges at the front, adding privacy, with steps leading down to the entrance and a lawn on either side.

Upon entry, the ground floor welcomes you into the entrance hall, with space for coat and shoe storage and comprising the stairs rising to the first floor. To the right is the entrance to the lounge, offering a great space for comfort, with large windows allowing plenty of light to flow through. The lounge leads into the kitchen, fitted with ample storage and worktop space, an integrated oven with electric hob, and space for freestanding appliances, as well as a door opening onto the rear garden.

The first floor brings you onto the landing and into bedroom one, a spacious double with an open storage cupboard ideal as a wardrobe; bedroom two, a generously sized single; and the bathroom, fitted with a toilet, wash basin, and bathtub with an overhead electric shower, as well as an airing cupboard housing the boiler.

The rear garden leads out onto a spacious patio, a great space for outdoor furniture and dining, whilst being surrounded by lawn and bordered by fences, with a gate to the side allowing access to the front of the property.

Situated in the popular location of Weoley Castle, Birmingham, this property benefits from excellent local schools and amenities, with easy access to a range of local shops, restaurants, and supermarkets. For commuters, various regular bus services operate throughout the area, and Selly Oak train station is approximately 2 miles away.



Details:

Entrance Hall

Lounge 13'6" x 12'9" (4.11m x 3.89m)

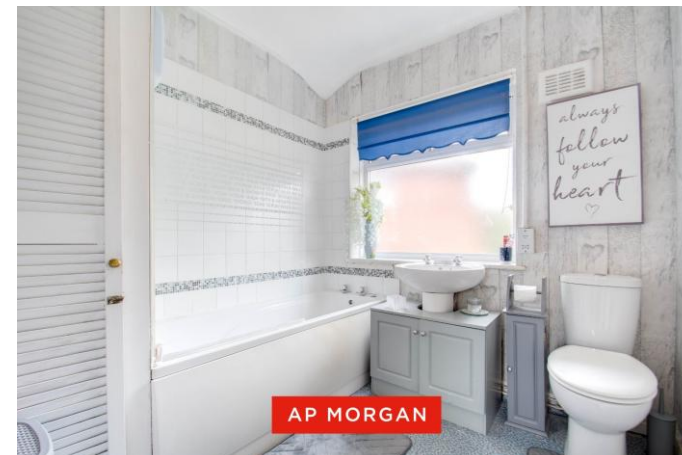
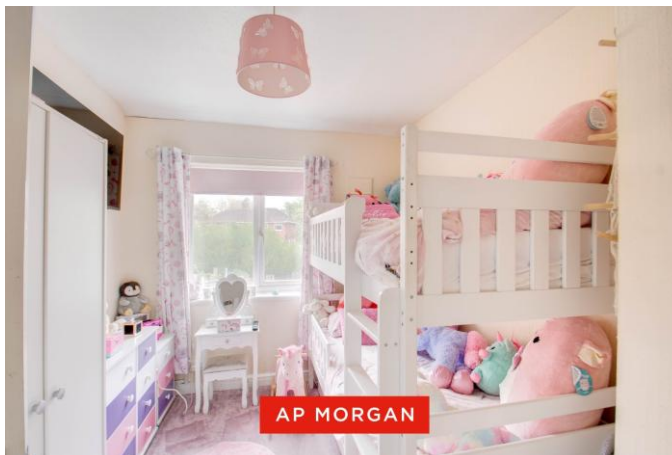
Kitchen 8'2" x 15'8" (2.5m x 4.78m)

Landing

Bedroom One 9'1" x 15'8" (2.77m x 4.78m)

Bedroom Two 10'11" x 8'3" (3.33m x 2.51m)

Bathroom 8'2" x 7'5" (2.5m x 2.26m)



EPC Rating: C

Council Tax Band: B (tbc by solicitors).

Tenure: Freehold (tbc by solicitors).

For more information or to arrange a viewing, please call us on 0121 827 6827.

How can we help you?

Need a mortgage?

We recommend Wiser Mortgage Advice. They will search the market for you to ensure you get the right lender and mortgage deal. They typically achieve mortgage offers much more quickly than if you were dealing with lenders directly. The initial appointment is free and without obligation. Call us on 0121 827 6827, or visit their website for more information: www.wisermortgageadvice.co.uk

Property to sell?

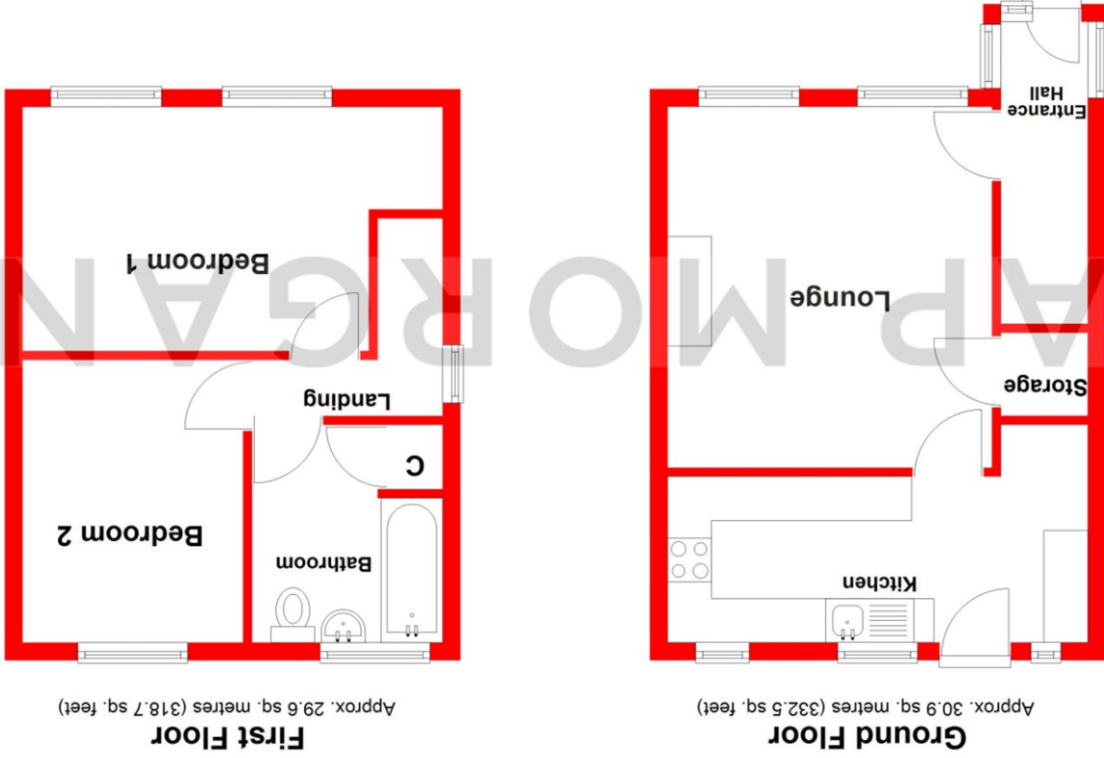
If you need to sell a property in order to buy, you ideally need to be on the market at least (and preferably Sold STC) before viewing, otherwise you may lose out to other buyers when the right property comes along. In these circumstances we can get your property 'live' quickly. Just book a free valuation and we will visit your property and discuss your needs.

Need a solicitor?

A good solicitor can save you literally weeks of time in the buying/selling process, reducing the stress levels of all involved. We will instruct a reputable firm that is competitive on cost and very reliable. Just ask for a quote.

Identity Checks

Estate Agents are required by law to conduct anti-money laundering checks on all those buying a property. We have partnered with a third party supplier to undertake these who will contact you once you have had an offer accepted on a property you wish to buy. The cost of these checks is £99 + VAT per buyer and this is a non-refundable fee. These charges cover the cost of obtaining relevant data, any manual checks and monitoring which might be required. This fee will need to be paid and the checks completed in advance of the issuing of a memorandum of sale on the property you would like to buy.



Total area: approx. 60.5 sq. metres (651.2 sq. feet)

Whilst every attempt has been made to ensure the accuracy of the floorplan contained here, measurements of doors, windows, rooms, and any other items are approximate and no responsibility is taken for any error, omission or misstatement. This plan is for illustrative purposes only and should be used as such by any prospective purchaser. The services, systems and appliances shown have not been tested and no guarantee as to their operability or efficiency can be given.

Plan produced using PlanUp.

No statement in these details is to be relied upon as representation of fact, and purchasers should satisfy themselves by inspection or otherwise as to the accuracy of the statements contained within. These details do not constitute any part of any offer or contract. AP Morgan and their employees and agents do not have any authority to give any warranty or representation whatsoever in respect of this property. These details and all statements herein are provided without any responsibility on the part of AP Morgan or the vendors. Equipment: AP Morgan has not tested the equipment or central heating system mentioned in these particulars and the purchasers are advised to satisfy themselves as to the working order and condition. Measurements: Great care is taken when measuring, but measurements should not be relied upon for ordering carpets, equipment, etc. The Laws of Copyright protect this material. AP Morgan is the Owner of the copyright. This property sheet forms part of our database and is protected by the database right and copyright laws. No unauthorised copying or distribution without permission.