

AP MORGAN



Hewell Avenue, Bromsgrove, Worcestershire
£550 per month

Features:

- ****AVAILABLE NOW****
- First floor room to rent
- Single bedroom
- Communal kitchen and bathrooms
- On-road parking
- Great location

Description:

Introducing to the rental market this room to rent in a house share, offering a single bedroom, a communal kitchen and bathrooms, as well as on-street parking, situated in Charford, Bromsgrove.

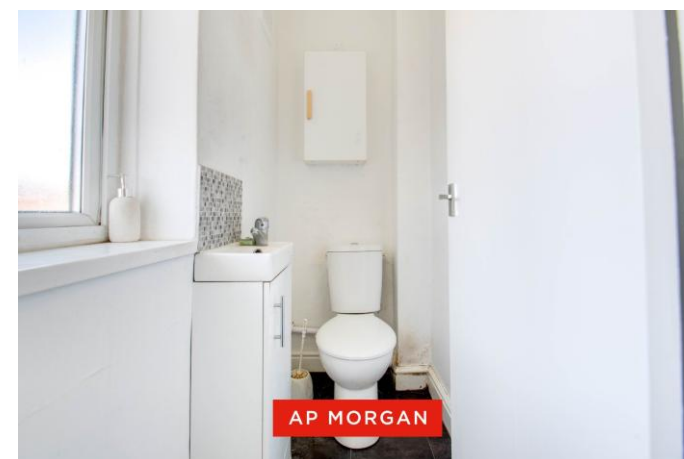
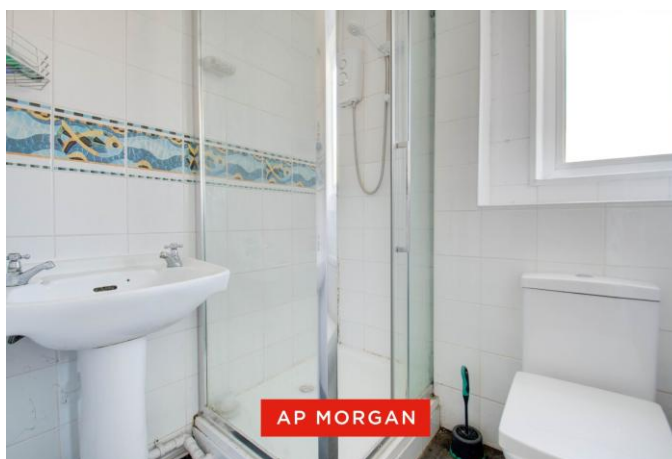
On arrival, the property presents a green space at the front, with a pathway leading to the entrance, with on-street parking around the property.

Upon entry, the ground floor leads into a hallway with stairs rising to the first floor. The kitchen is located opposite the entrance and is fitted with storage space, a fridge freezer, and a washing machine. There is also a door opening into the rear garden. To the left is the communal bathroom, fitted with a toilet, wash basin, and shower cubicle.

The first floor comprises a single bedroom with space for storage units, as well as an additional communal bathroom with a toilet and wash basin.

The rear garden offers a patio area, leading onto a large lawn, along with a storage shed.

Situated in Charford, Bromsgrove, the property is close to Bromsgrove town centre and the many amenities it has to offer, including pubs, eateries, supermarkets, transport links, and leisure facilities. Furthermore, the property benefits from easy access to major road and commuter links, including the M5 and M42 motorways.



Details:

Hall

Kitchen 9'3" x 9'2" (2.82m x 2.8m)

Communal Bathroom 5'6" x 5'6" (1.68m x 1.68m)

Room Two 8'6" x 9' (2.6m x 2.74m) Both Max

Communal Toilet



EPC Rating: To be confirmed

Council Tax Band: B (tbc by solicitors).

Tenure: To be advised (tbc by solicitors).

For more information or to arrange a viewing, please call us on 01527 910 300.

How can we help you?

Need a mortgage?

We recommend Wiser Mortgage Advice. They will search the market for you to ensure you get the right lender and mortgage deal. They typically achieve mortgage offers much more quickly than if you were dealing with lenders directly. The initial appointment is free and without obligation. Call us on 01527 910 300, or visit their website for more information: www.wisermortgageadvice.co.uk

Property to sell?

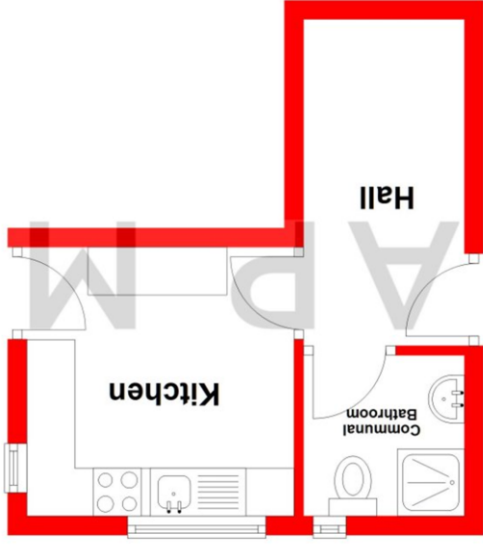
If you need to sell a property in order to buy, you ideally need to be on the market at least (and preferably Sold STC) before viewing, otherwise you may lose out to other buyers when the right property comes along. In these circumstances we can get your property 'live' quickly. Just book a free valuation and we will visit your property and discuss your needs.

Need a solicitor?

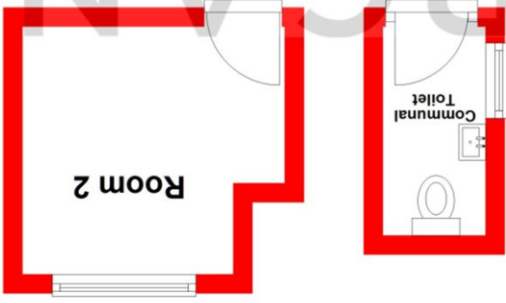
A good solicitor can save you literally weeks of time in the buying/selling process, reducing the stress levels of all involved. We will instruct a reputable firm that is competitive on cost and very reliable. Just ask for a quote.

Need a removal company and storage?

A professional removal company takes the stress out of moving. Knowing that your belongings are safe and insured far outweighs any small savings by trying to do it yourself or using a man-and-a-van service. We work closely with and recommend Cube Removals as the leading local firm. For peace of mind and a reliable service call them on 0800 193 0000 or visit their website, cuberemovals.co.uk, to arrange a survey.



Ground Floor
Approx. 16.8 sq. metres (181.3 sq. feet)



First Floor
Approx. 8.9 sq. metres (96.1 sq. feet)

Total area: approx. 25.8 sq. metres (277.4 sq. feet)

Whilst every attempt has been made to ensure the accuracy of the floorplan contained here, measurements of doors, windows, rooms, and any other items are approximate and no responsibility is taken for any error, omission or mis-statement. This plan is for illustrative purposes only and should be used as such by any prospective purchaser. The services, systems and appliances shown have not been tested and no guarantee as to their operability or efficiency can be given.
Plan produced using PlanUp.

No statement in these details is to be relied upon as representation of fact, and purchasers should satisfy themselves by inspection or otherwise as to the accuracy of the statements contained within. These details do not constitute any part of any offer or contract. AP Morgan and their employees and agents do not have any authority to give any warranty or representation whatsoever in respect of this property. These details and all statements herein are provided without any responsibility on the part of AP Morgan or the vendors. Equipment: AP Morgan has not tested the equipment or central heating system mentioned in these particulars and the purchasers are advised to satisfy themselves as to the working order and condition. Measurements: Great care is taken when measuring, but measurements should not be relied upon for ordering carpets, equipment, etc. The Laws of Copyright protect this material. AP Morgan is the Owner of the copyright. This property sheet forms part of our database and is protected by the database right and copyright laws. No unauthorised copying or distribution without permission.