

AP MORGAN



Hydes Road, West Bromwich, West Midlands
£1,295 per month

Features:

- Available from mid May
- Part-furnished
- Detached property
- Two double bedrooms
- Modern kitchen
- Spacious lounge/diner
- Low maintenance rear garden
- Front driveway

Description:

*** VIEWING EVENT ON THURSDAY 30TH APRIL ***

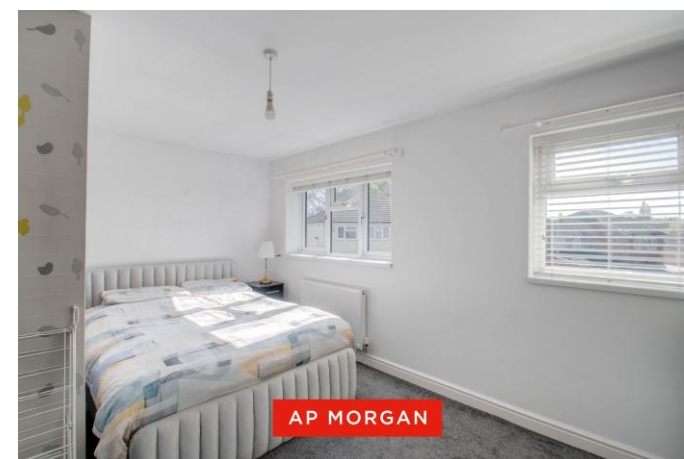
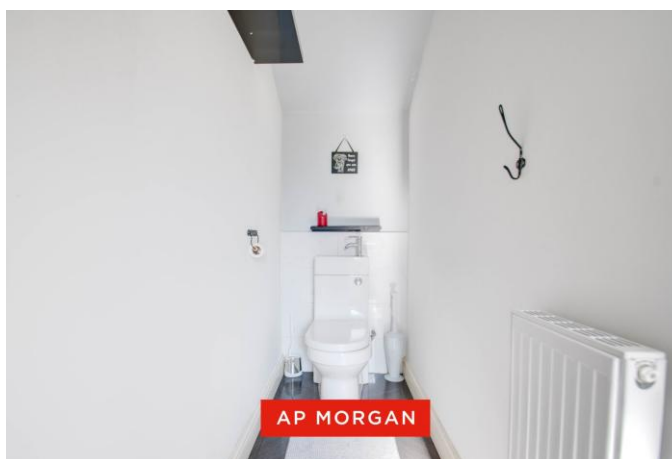
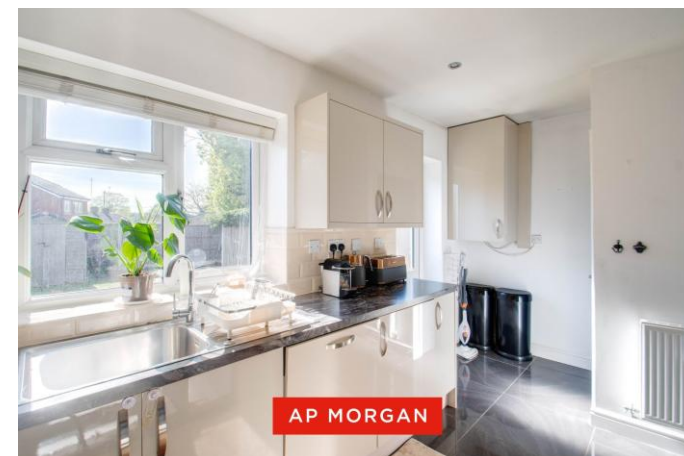
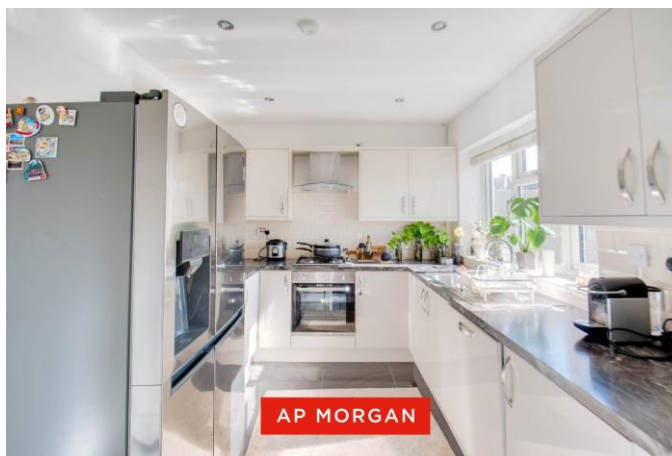
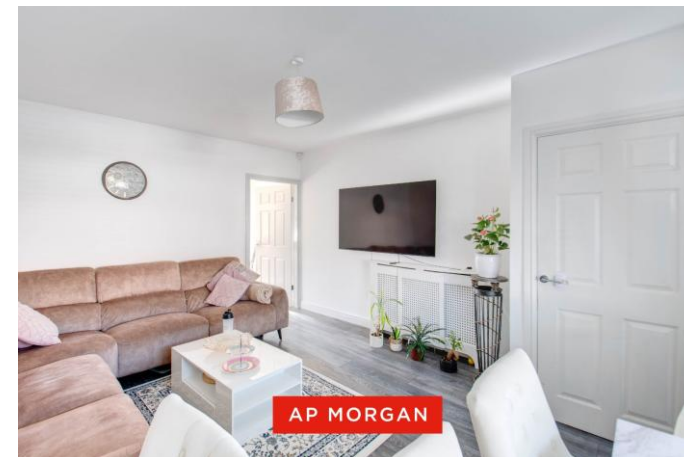
Welcoming to the rental market this well-presented detached home, offering two double bedrooms, a spacious lounge/diner, a modern fitted kitchen, a generous rear garden, and a front driveway, situated in West Bromwich.

On arrival, the property features a driveway at the front suitable for one to two cars, with a lawn to the left adding greenery to the frontage, and a gate to the right providing access to the rear garden.

Upon entry, the ground floor leads into the entrance hall, with stairs rising to the first floor and access to the lounge/diner on the left. This is a great space for both relaxation and dining, comfortably accommodating a table with four chairs. A large bay window, fitted with blinds and curtains, allows plenty of natural light to flow through.

The lounge/diner leads into the kitchen, which is fitted with modern worktops and storage cabinets, an integrated dishwasher, an oven with a four-burner gas hob, as well as a freestanding fridge/freezer. The kitchen also provides access to the rear garden and a convenient WC, fitted with a toilet and wash basin.

The first floor leads onto the landing, providing access to bedroom one—a generous double with a double bed frame—a second spacious double bedroom, and the bathroom, which is modernly fitted with a toilet, wash basin, and a bathtub with an overhead shower.



The rear garden opens onto a patio area, ideal for outdoor furniture and dining, with a decked area to the side. The remainder of the garden is laid to lawn and enclosed by fencing.

Situated in West Bromwich, this property is nearby to local supermarkets and convenience stores, as well as parks and green spaces. It is also ideally located for well-regarded schools and offers excellent transport links, with nearby train stations and easy access to motorway networks.

Details:

Entrance Hall

Lounge/Diner 14'9" x 12'2" (4.5m x 3.7m)

Kitchen 8'6" x 15'5" (2.6m x 4.7m) Both Max

WC

Landing

Bedroom One 9'10" x 15'5" (3m x 4.7m) Both Max

Bedroom Two 7'8" x 15'5" (2.34m x 4.7m) Both Max

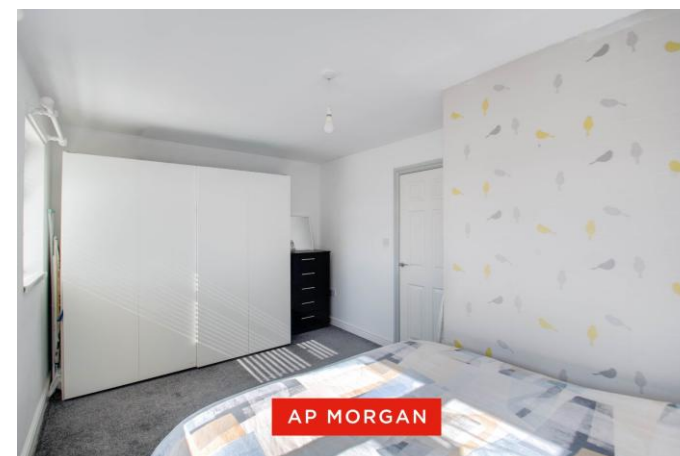
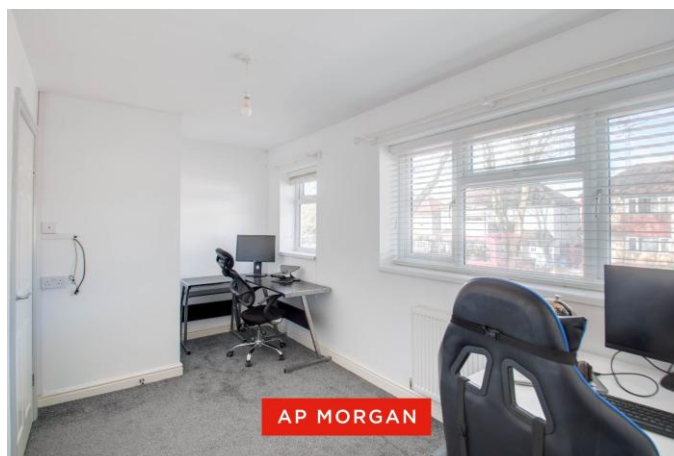
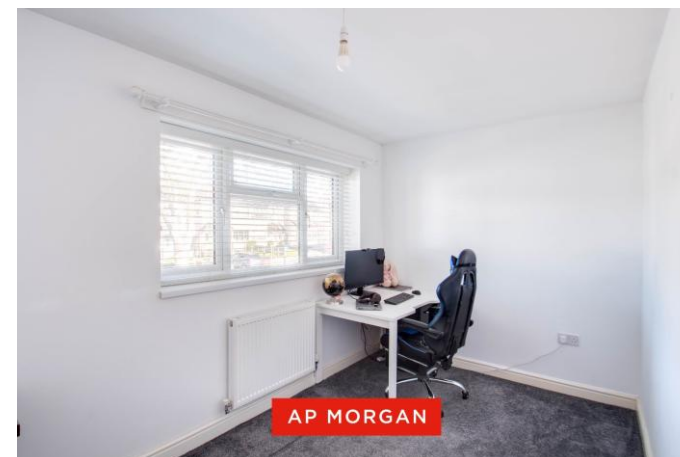
Bathroom 7'9" x 6'2" (2.36m x 1.88m)

EPC Rating: B

Council Tax Band: C (tbc by solicitors).

Tenure: To be advised (tbc by solicitors).

For more information or to arrange a viewing, please call us on 0121 827 6827.



How can we help you?

Need a mortgage?

We recommend Wisser Mortgage Advice. They will search the market for you to ensure you get the right lender and mortgage deal. They typically achieve mortgage offers much more quickly than if you were dealing with lenders directly. The initial appointment is free and without obligation. Call us on 0121 827 6827, or visit their website for more information: www.wissermortgageadvice.co.uk

Property to sell?

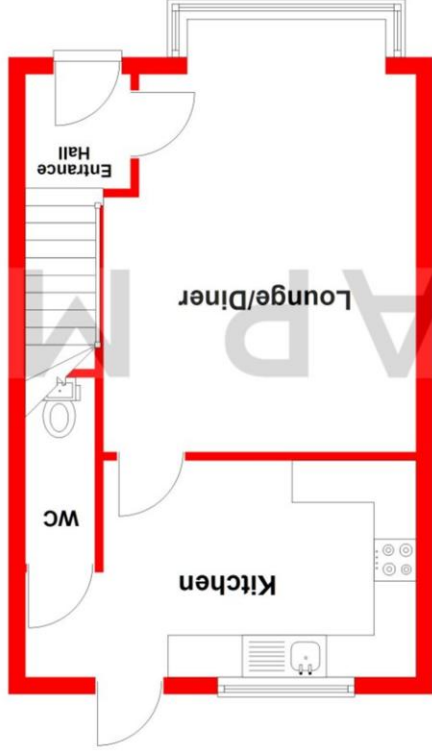
If you need to sell a property in order to buy, you ideally need to be on the market at least (and preferably Sold STC) before viewing, otherwise you may lose out to other buyers when the right property comes along. In these circumstances we can get your property 'live' quickly. Just book a free valuation and we will visit your property and discuss your needs.

Need a solicitor?

A good solicitor can save you literally weeks of time in the buying/selling process, reducing the stress levels of all involved. We will instruct a reputable firm that is competitive on cost and very reliable. Just ask for a quote.

Need a removal company and storage?

A professional removal company takes the stress out of moving, knowing that your belongings are safe and insured far outweighs any small savings by trying to do it yourself or using a man-and-a-van service. We work closely with and recommend Cube Removals as the leading local firm. For peace of mind and a reliable service call them on 0800 193 0000 or visit their website, cuberemovals.co.uk, to arrange a survey.



Ground Floor
Approx. 34.3 sq. metres (369.2 sq. feet)



First Floor
Approx. 33.5 sq. metres (360.9 sq. feet)

Total area: approx. 67.8 sq. metres (730.1 sq. feet)

Whilst every attempt has been made to ensure the accuracy of the floorplan contained here, measurements of doors, windows, rooms, and any other items are approximate and no responsibility is taken for any error, omission or misstatement. This plan is for illustrative purposes only and should be used as such by any prospective purchaser. The services, systems and appliances shown have not been tested and no guarantee as to their operability or efficiency can be given. Plan produced using PlanUp.

No statement in these details is to be relied upon as representation of fact, and purchasers should satisfy themselves by inspection or otherwise as to the accuracy of the statements contained within. These details do not constitute any part of any offer or contract. AP Morgan and their employees and agents do not have any authority to give any warranty or representation whatsoever in respect of this property. These details and all statements herein are provided without any responsibility on the part of AP Morgan or the vendors. Equipment: AP Morgan has not tested the equipment or central heating system mentioned in these particulars and the purchasers are advised to satisfy themselves as to the working order and condition. Measurements: Great care is taken when measuring, but measurements should not be relied upon for ordering carpets, equipment, etc. The Laws of Copyright protect this material. AP Morgan is the Owner of the copyright. This property sheet forms part of our database and is protected by the database right and copyright laws. No unauthorised copying or distribution without permission.