



**AP MORGAN**

**Pope Street, Jewellery Quarter, Birmingham**  
£1,200 per month

### Features:

- Lovely City Centre apartment
- Two double bedrooms with fitted wardrobes
- Open plan living space
- Modern fitted kitchen
- Stylish bathroom
- Balcony overlooking communal garden space
- On-road parking
- EPC- B

### Description:

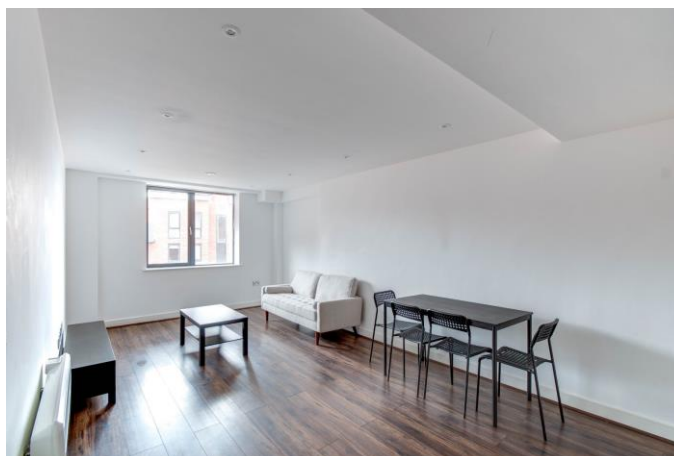
A rare opportunity has arisen to rent a beautifully presented, two bedroom third floor apartment situated in the thriving Jewellery Quarter of Birmingham City Centre. Ideal for young couples or those looking for a property more conveniently located for their city centre jobs.

There is on road parking down Pope Street subject to availability but various public transport links are conveniently located nearby.

The property itself comprises of a welcoming entrance hall with two built-in storage cupboards; stylish and open plan living space including the lounge, dining area and modern fitted kitchen with integrated appliances including dishwasher, washing machine, fridge/freezer, induction hob, oven and sink bowl; two good sized double bedrooms with built-in wardrobes and a stylish bathroom with bath and overhead shower.

In the centre of the complex there is a lovely communal garden space with various trees and foliage planted as well as several seating areas.

Situated in the thriving area of the Jewellery Quarter, local amenities including shops and restaurants are conveniently located within walking distance as well as several bus routes and Jewellery Quarter train station opening wider travel opportunities.



**Details:**

**Lounge/Dining area/Kitchen** 22'4" x 11'6" (6.8m x 3.5m)

**Bedroom One** 13'7" x 10'6" (4.14m x 3.2m)

**Bedroom Two** 11'2" x 8'8" (3.4m x 2.64m)

**Bathroom** 6'9" x 5'6" (2.06m x 1.68m)

**EPC Rating:** B

**Council Tax Band:** D (tbc by solicitors).

**Tenure:** Leasehold (tbc by solicitors).

For more information or to arrange a viewing, please call us on 01384 319 400.



## How can we help you?

### Need a mortgage?

We recommend Wiser Mortgage Advice. They will search the market for you to ensure you get the right lender and mortgage deal. They typically achieve mortgage offers much more quickly than if you were dealing with lenders directly. The initial appointment is free and without obligation. Call us on 01384 319 400, or visit their website for more information: [www.wisermortgageadvice.co.uk](http://www.wisermortgageadvice.co.uk)

### Property to sell?

If you need to sell a property in order to buy, you ideally need to be on the market at least (and preferably Sold STC) before viewing, otherwise you may lose out to other buyers when the right property comes along. In these circumstances we can get your property 'live' quickly. Just book a free valuation and we will visit your property and discuss your needs.

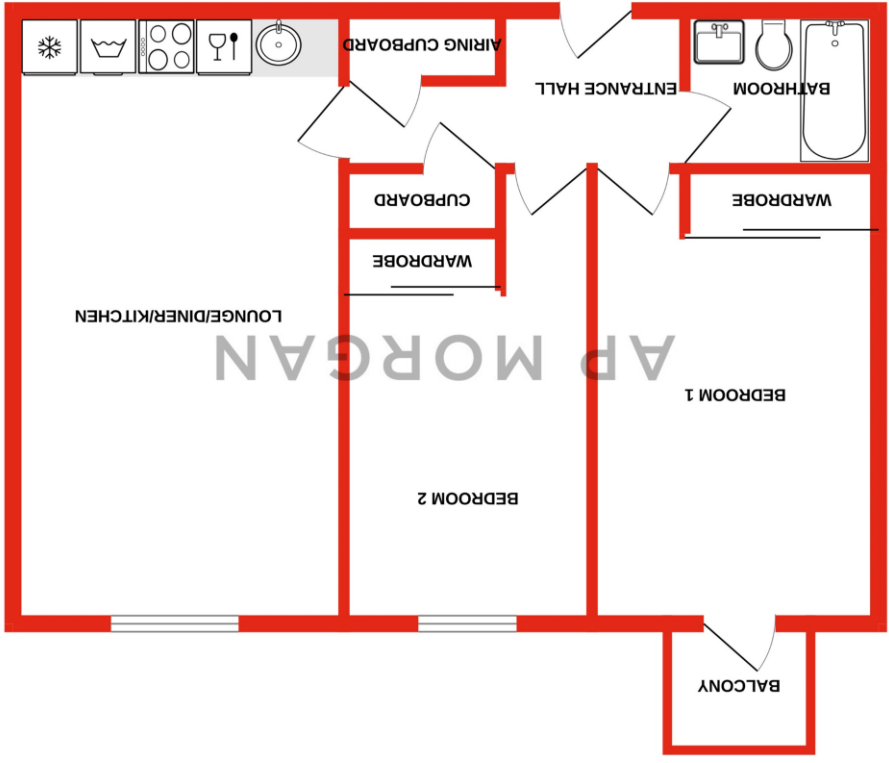
### Need a solicitor?

A good solicitor can save you literally weeks of time in the buying/selling process, reducing the stress levels of all involved. We will instruct a reputable firm that is competitive on cost and very reliable. Just ask for a quote.

### Need a removal company and storage?

A professional removal company takes the stress out of moving, knowing that your belongings are safe and insured far outweighs any small savings by trying to do it yourself or using a man-and-a-van service. We work closely with and recommend Cube Removals as the leading local firm. For peace of mind and a reliable service call them on 0800 193 0000 or visit their website, [cuberemovals.co.uk](http://cuberemovals.co.uk), to arrange a survey.

GROUND FLOOR  
641 sq.ft. (59.6 sq.m.) approx.



When every attempt has been made to ensure the accuracy of the floorplan contained here, measurements of doors, windows, corners and any other items are approximate and no responsibility is taken for any error or omission on the statement. This plan is illustrative purposes only and should be used as such by any prospective purchaser. The service, options and appliances shown have not been tested and no guarantee as to their quantity or efficiency can be given.  
Made with Metrebox ©2023

No statement in these details is to be relied upon as representation of fact, and purchasers should satisfy themselves by inspection or otherwise as to the accuracy of the statements contained within. These details do not constitute any part of any offer or contract. AP Morgan and their employees and agents do not have any authority to give any warranty or representation whatsoever in respect of this property. These details and all statements herein are provided without any responsibility on the part of AP Morgan or the vendors. Equipment: AP Morgan has not tested the equipment or central heating system mentioned in these particulars and the purchasers are advised to satisfy themselves as to the working order and condition. Measurements: Great care is taken when measuring, but measurements should not be relied upon for ordering carpets, equipment, etc. The Laws of Copyright protect this material. AP Morgan is the Owner of the copyright. This property sheet forms part of our database and is protected by the database right and copyright laws. No unauthorised copying or distribution without permission.