



32 Forum View, Bryanston, Dorset, DT11 0PW





**Beautifully updated 3/4 bedroom end terrace home with stylish kitchen, flexible living space and a superbly generous rear garden with driveway parking for several vehicles, set in a quiet residential position.**

**Entrance Hall and Landing** - Inviting hallway with stairs rising to a bright first-floor landing, featuring a side window and white balustrade, giving access to bedrooms, bathroom and built-in storage.

**WC 6'8" (2.03m) x 4'8" (1.42m)** - Practical cloakroom with low-level WC and wash hand basin.

**Dining Room/Bedroom 4 11'6" (3.51m) x 10'0" (3.05m)** - Flexible reception room currently arranged as an additional sitting or dining area, with wood-effect flooring and outlook to the front, ideal as a study, playroom or ground floor bedroom.

**Kitchen/Dining Room 15'0" (4.57m) x 6'10" (2.08m)** - Contemporary grey shaker-style units with extensive worktops, breakfast bar and integrated lighting, plus space for range cooker. French doors open to the raised patio and garden, creating an excellent social and entertaining hub.

**Lounge 15'10" (4.83m) x 10'7" (3.23m)** - Generous main living space with front aspect window, modern decor and recessed downlighting, offering plenty of room for both sitting and dining areas with views to the front hedged garden.

**Bedroom 1 12'2" (3.71m) x 10'0" (3.05m)** - Well-proportioned double bedroom with front aspect window, built in cupboard, neutral decor and space for freestanding wardrobes, enjoying a pleasant outlook

**Bedroom 2 11'5" (3.48m) x 9'10" (3m)** - Double bedroom with dual aspect to front and side, offering a calm retreat with room for bedroom furniture, built in cupboard

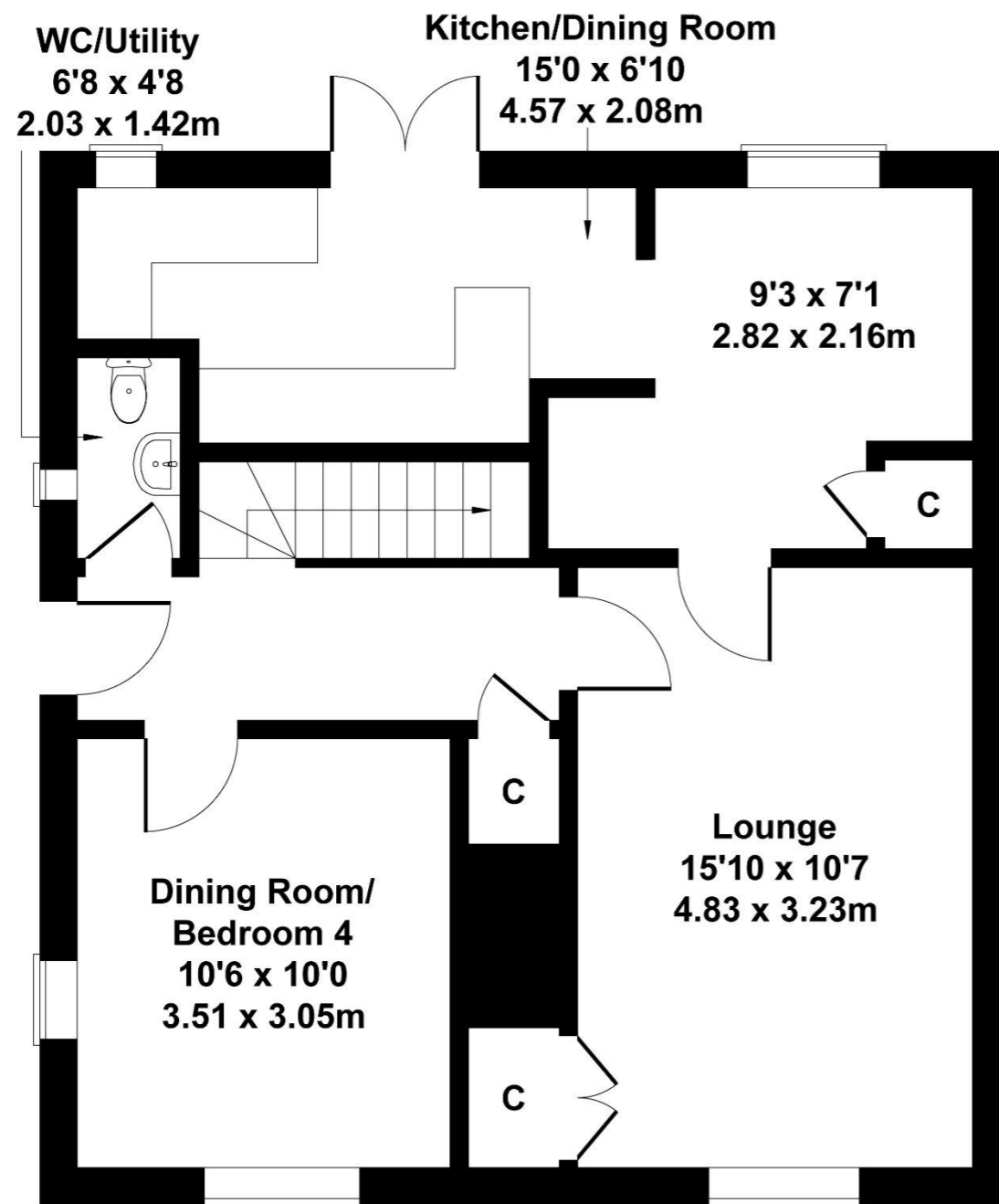
**Bedroom 3 9'1" (2.77m) x 7'8" (2.34m)** - Light single bedroom with rear aspect, ideal as a child's room, guest bedroom or home office, with neutral carpets and walls ready for personalisation.

**Bathroom 5'10" (1.78m) x 4'10" (1.47m)** - Modern shower room featuring a corner glazed enclosure with rainfall-style shower, contemporary white suite, subway-style tiling and rear window providing natural light.

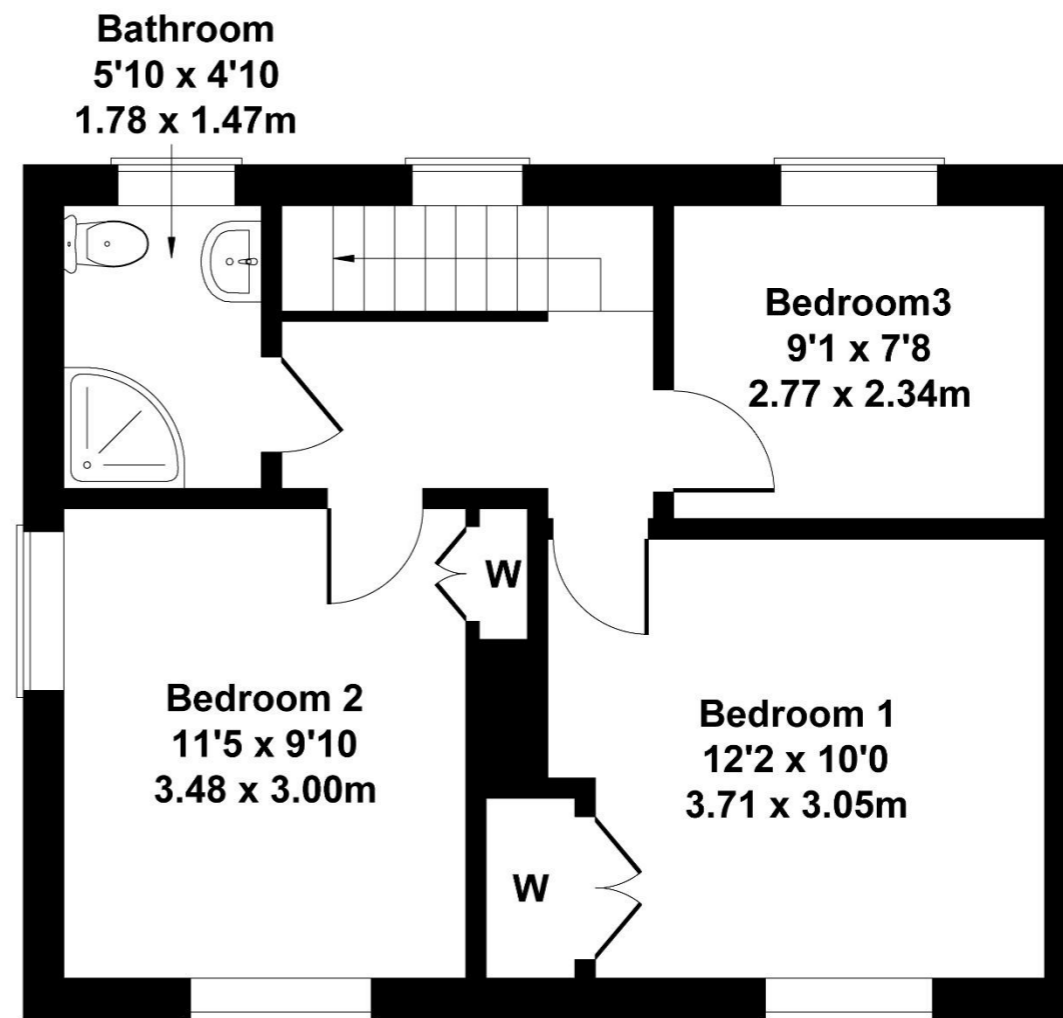
**Rear Garden and Driveway** - Extensive rear plot with large paved terrace, gravelled seating area, level lawn and established borders, leading to a further lawn with summerhouse. Gated gravel driveway beyond provides off-road parking for around three vehicles.

# 32 Forum View

Approximate Gross Internal Area  
1085 sq ft - 101 sq m



**GROUND FLOOR**



**FIRST FLOOR**

Not to Scale. Produced by The Plan Portal 2026  
For Illustrative Purposes Only.

Please note Forum Sales & Lettings and their client give notice that:

1. They have no authority to make or give any representation or warranties in relations to the property. These particulars do not form part of any offer or contract and must not be relied upon as statements or representations of fact.

2. Any areas, common measurements or distances are approximate. The text, photographs and plans are for guidance only and are not necessarily comprehensive. It should not be assumed that the property has all necessary Planning, Building Regulations or other consents and Forum Sales and Lettings have not tested any services, equipment or facilities. Purchasers must satisfy themselves by inspection or otherwise.

EPC Rating - C

Viewing Arrangements - Strictly by appointment with Forum Sales & Lettings

15 Salisbury Street, Blandford Forum, Dorset, DT11 7AU

Tel: 01258 459600