



11 Forum View, Bryanston, Dorset, DT11 0PW





A pleasantly situated three bedroom semi-detached home with generous gardens, flexible reception space and off-road parking in a peaceful setting, with woodland and open countryside a stones throw away.

Living Room - Front-facing reception with large window, feature fireplace with surround, wood-effect flooring and neutral decor.

Dining Room - Flexible second reception overlooking the front garden, with fireplace and matching flooring, perfect as a formal dining space or additional lounge.

Kitchen - Modern fitted kitchen with extensive worktops, central island(moveable), integrated storage and space for appliances, opening to a casual dining area with views to the rear.

Conservatory - Light-filled garden room with glazing to two sides and external door to the patio, providing a pleasant spot for morning coffee or reading.

Ground Floor Toilet - Practical downstairs WC located off the hallway, serving the main living areas.



Bedroom 1 - Well-proportioned double bedroom with front aspect window, wood-effect flooring and space for wardrobes, enjoying a green outlook over the front aspect.

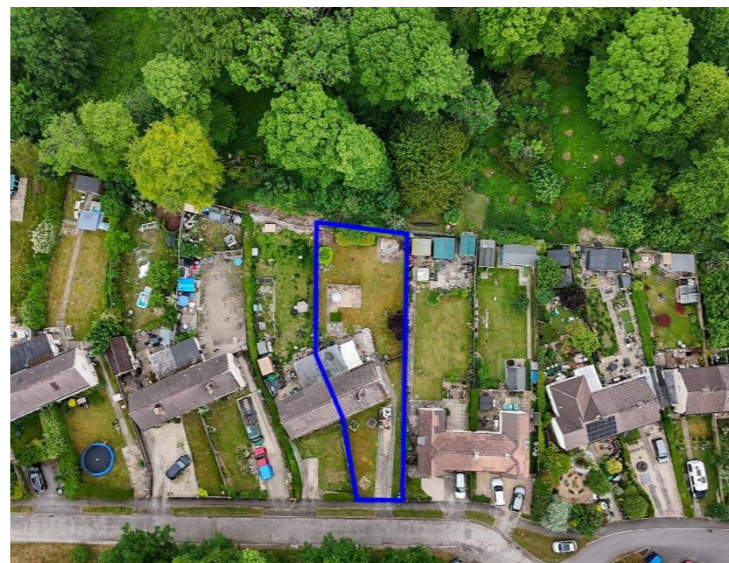
Bedroom 2 - Generous double bedroom to the front with dual windows and ample space for storage or a desk.

Bedroom 3 - Single bedroom with fitted wardrobes and rear-facing window, perfect as a child's room, dressing room or study.

Shower Room - Modern first-floor shower room with large glazed enclosure, wash basin, WC and tiled walls, served by an obscured window for natural light.

Front Garden and Driveway - Deep front garden with lawn and planting borders, together with a long private driveway providing off-road parking for multiple vehicles.

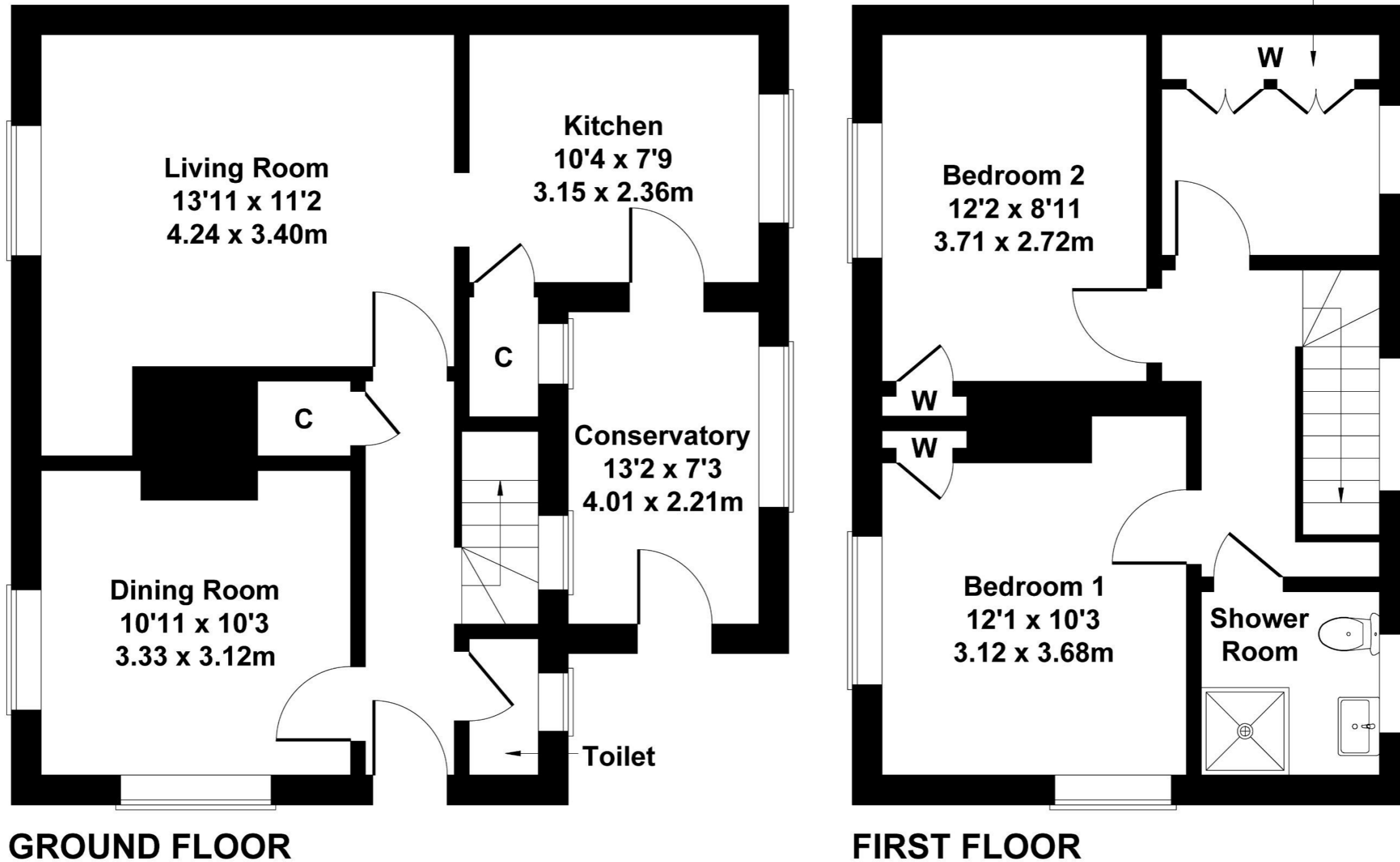
Rear Garden - Substantial rear garden backing onto mature woodland, mainly laid to lawn with paved patio, seating areas and scope for further landscaping or vegetable beds.



11 Forum View

Approximate Gross Internal Area
982 sq ft - 91 sq m

Bedroom 3
7'8 x 7'5
2.34 x 2.26m



Not to Scale. Produced by The Plan Portal 2026
For Illustrative Purposes Only.

Please note Forum Sales & Lettings and their client give notice that:

1. They have no authority to make or give any representation or warranties in relations to the property. These particulars do not form part of any offer or contract and must not be relied upon as statements or representations of fact.

2. Any areas, common measurements or distances are approximate. The text, photographs and plans are for guidance only and are not necessarily comprehensive. It should not be assumed that the property has all necessary Planning, Building Regulations or other consents and Forum Sales and Lettings have not tested any services, equipment or facilities. Purchasers must satisfy themselves by inspection or otherwise.

EPC Rating - C

Viewing Arrangements - Strictly by appointment with Forum Sales & Lettings

15 Salisbury Street, Blandford Forum, Dorset, DT11 7AU

Tel: 01258 459600