



3 Davis Gardens, Blandford Forum, Dorset, DT11 7UX





A stylish four bedroom detached home with generous parking, landscaped garden and contemporary interiors, tucked away in a peaceful Blandford Forum cul-de-sac close to local amenities.

Entrance Hall - Welcoming hallway with glazed front door and side panels, flooring and stairs to the first floor. Provides access to the cloakroom, sitting room and utility, creating an easy flow through the ground floor.

WC - Ground floor cloakroom with modern white suite comprising close-coupled toilet and wash basin, tiled splashbacks and window for natural light and ventilation.

Sitting Room 15'1" (4.6m) x 14'9" (4.5m) - Bright, generous reception with contemporary decor, feature wall with wall-mounted fire and media point, plush carpeting and French doors opening directly onto the patio and garden, ideal for family living and entertaining.

Kitchen 15'11" (4.85m) x 9'4" (2.84m) - Beautifully fitted dual aspect kitchen offering sleek gloss units, extensive worktops, integrated oven and hob with extractor, inset sink and space for further appliances, enjoying views over the rear garden.



Dining Room 9'9" (2.97m) x 8'11" (2.72m) - Open plan to the kitchen via a wide archway with feature wallpaper, space for a family dining table and sideboard, tiled flooring and window to the side, creating a sociable heart to the home.

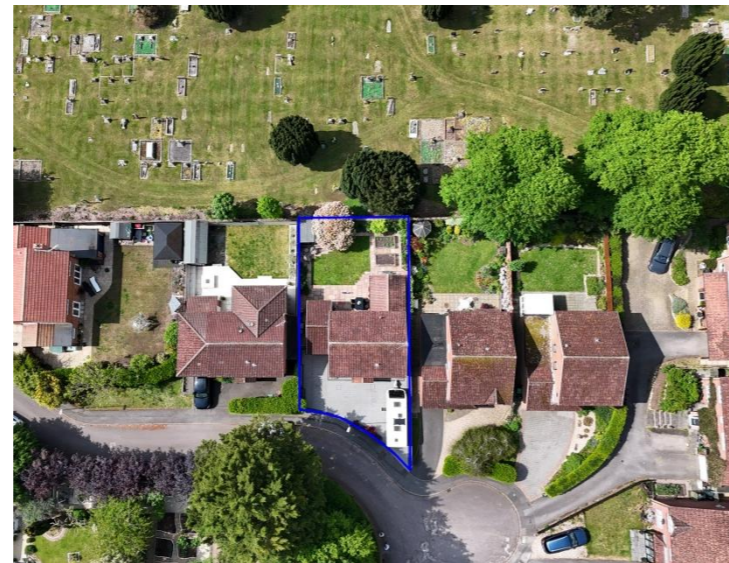
Utility Room 9'10" (3m) x 9'7" (2.92m) - Large utility with matching worktop, under-counter space for laundry appliances, housing the gas boiler with excellent built-in storage cupboards.

Garage - Attached single garage with up-and-over door, power and lighting, with driveway in front providing additional parking.

Landing - Central first floor landing with access to all bedrooms and the family bathroom, with partly boarded loft hatch providing further storage.

Bedroom 1 12'0" (3.66m) x 11'3" (3.43m) - Well-proportioned main bedroom overlooking the front with space for king-size bed, fitted sliding wardrobes and access to a stylish en suite shower room.

En-suite 6'4" (1.93m) x 5'7" (1.7m) - Contemporary shower room with glazed shower enclosure, vanity unit with counter-top basin, WC, attractive wall tiling and window, offering a luxurious private space.



Bedroom 2 10'8" (3.25m) x 9'0" (2.74m) - Generous double bedroom to the front with modern decor, ample space for freestanding wardrobes and large window allowing plenty of natural light.

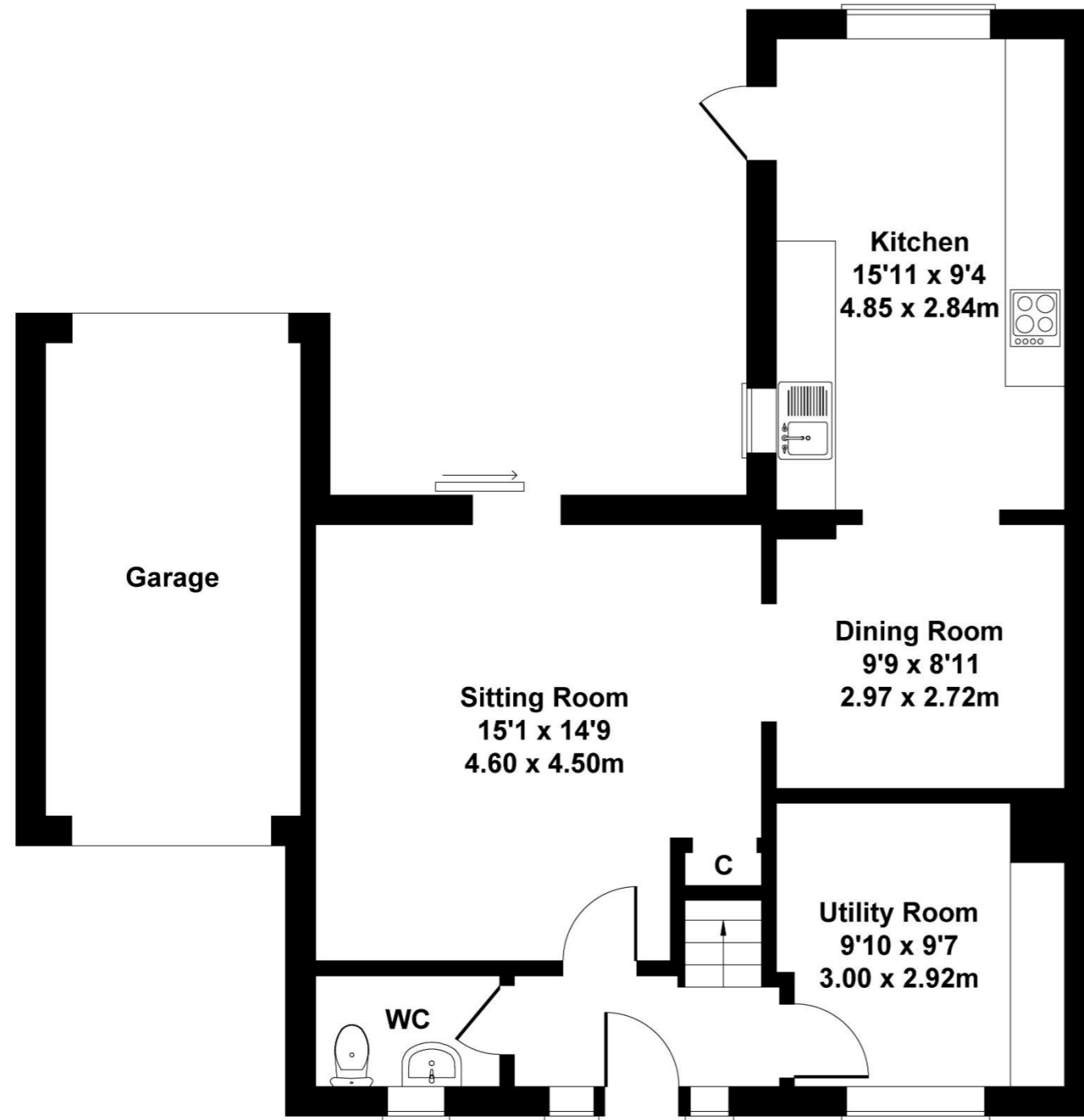
Bedroom 3 9'0" (2.74m) x 7'6" (2.29m) - Comfortable double room currently arranged as a office, rear aspect window and space for storage.

Bedroom 4 8'1" (2.46m) x 7'6" (2.29m) - Versatile fourth bedroom ideal as a single room, nursery or home office, with views over the rear garden and surrounding greenery.

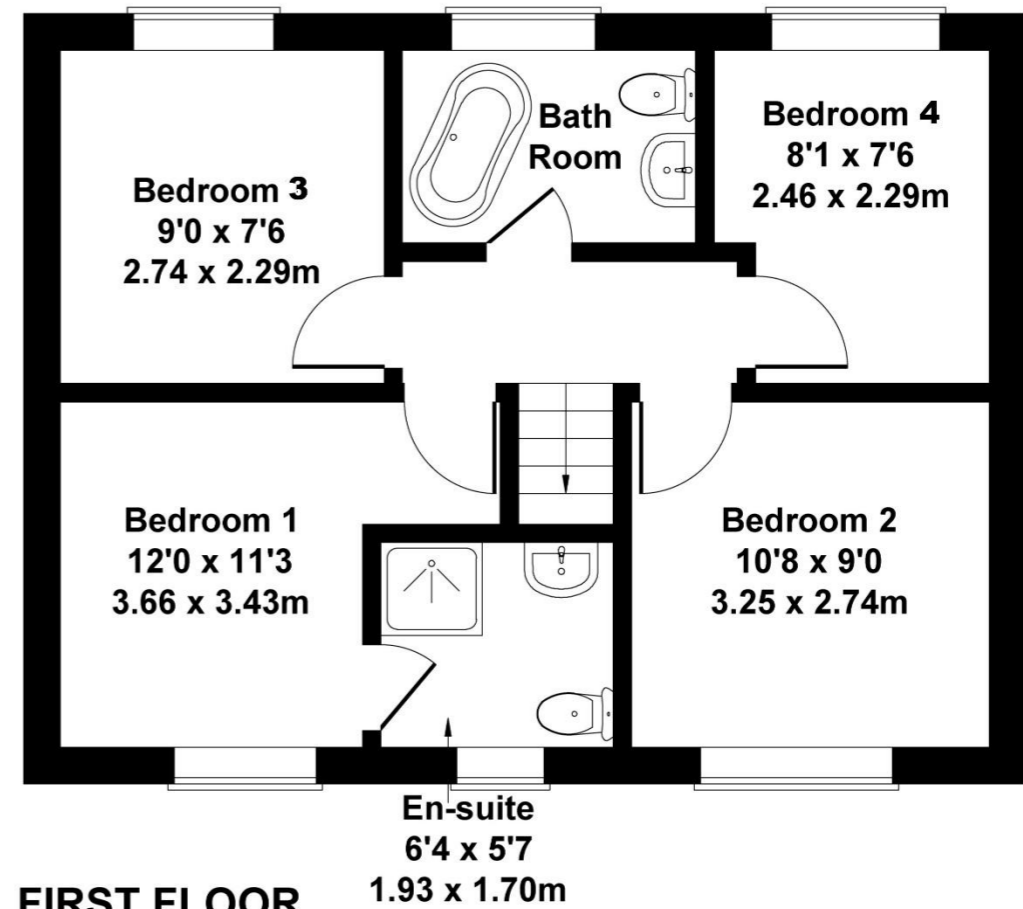
Bathroom - Smart family bathroom featuring an bath with shower over, contemporary tiling, vanity unit with inset basin, WC and rear window.

Garden - Block-paved frontage, providing off-road parking for around four vehicles including space for a caravan, flanked by low-maintenance planting and side access to the rear. A non-overlooked beautifully landscaped, level garden with broad paved terrace, lawn, mature borders, raised planters for vegetables, secluded seating area and timber summerhouse, enjoying a private, leafy outlook.

Approximate Gross Internal Area
1123 sq ft - 104 sq m
(Excluding Garage)



GROUND FLOOR



FIRST FLOOR

Not to Scale. Produced by The Plan Portal 2026
For Illustrative Purposes Only.

Please note Forum Sales & Lettings and their client give notice that:

1. They have no authority to make or give any representation or warranties in relations to the property. These particulars do not form part of any offer or contract and must not be relied upon as statements or representations of fact.

2. Any areas, common measurements or distances are approximate. The text, photographs and plans are for guidance only and are not necessarily comprehensive. It should not be assumed that the property has all necessary Planning, Building Regulations or other consents and Forum Sales and Lettings have not tested any services, equipment or facilities. Purchasers must satisfy themselves by inspection or otherwise.

EPC Rating - C

Viewing Arrangements - Strictly by appointment with Forum Sales & Lettings

15 Salisbury Street, Blandford Forum, Dorset, DT11 7AU

Tel: 01258 459600