



5 Haycombe, Durweston, Dorset, DT11 0PZ





**Modern 3/4 bedroom extended semi-detached village home with generous plot, extensive mature gardens and versatile living space, ideal for families seeking a peaceful Dorset setting.**

**Lounge 16'5" (5m) x 11'4" (3.45m)** - Inviting main reception with feature brick fireplace, space for sofas, and glazed doors opening to the rear terrace and garden.

**Kitchen/Breakfast Room 12'10" (3.91m) x 11'11" (3.63m)** - Modern fitted kitchen with ample wooden cabinetry, integrated worktops, room for appliances with Range cooker and breakfast area, opening to the dining space.

**Dining Room 11'5" (3.48m) x 9'3" (2.82m)** - Bright dual-aspect room overlooking the garden, ideal for formal dining or family meals, with space for a large table and storage.

**Bedroom 4/Study 13'2" (4.01m) x 9'11" (3.02m)** - Flexible ground floor room perfect as additional bedroom or home office.

**WC** - Ground floor cloakroom with toilet and wash basin, convenient for guests and family use.

**Bedroom 1 13'11" (4.24m) x 9'4" (2.84m)** - Well-proportioned double bedroom with large window, fitted wardrobe and pleasant outlook over gardens.

**Bedroom 2 11'4" (3.45m) x 10'6" (3.2m)** - Generous double bedroom with built-in wardrobes and countryside views, ideal as a guest bedroom.

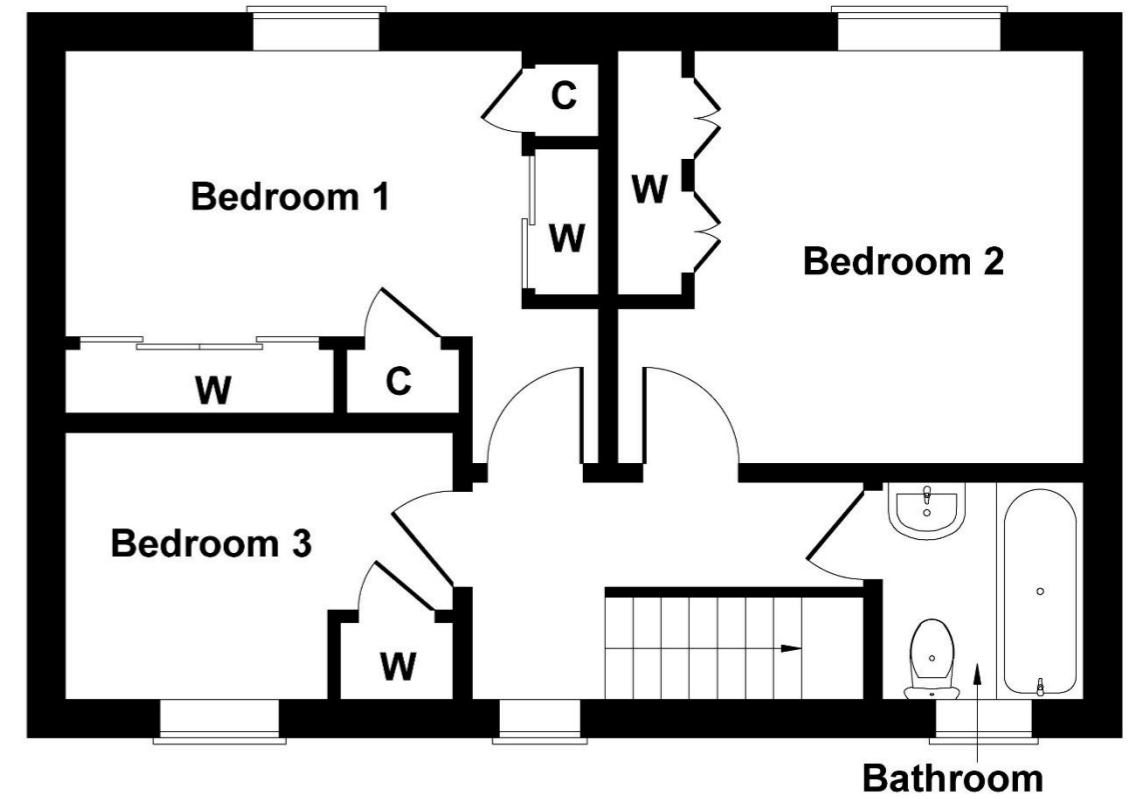
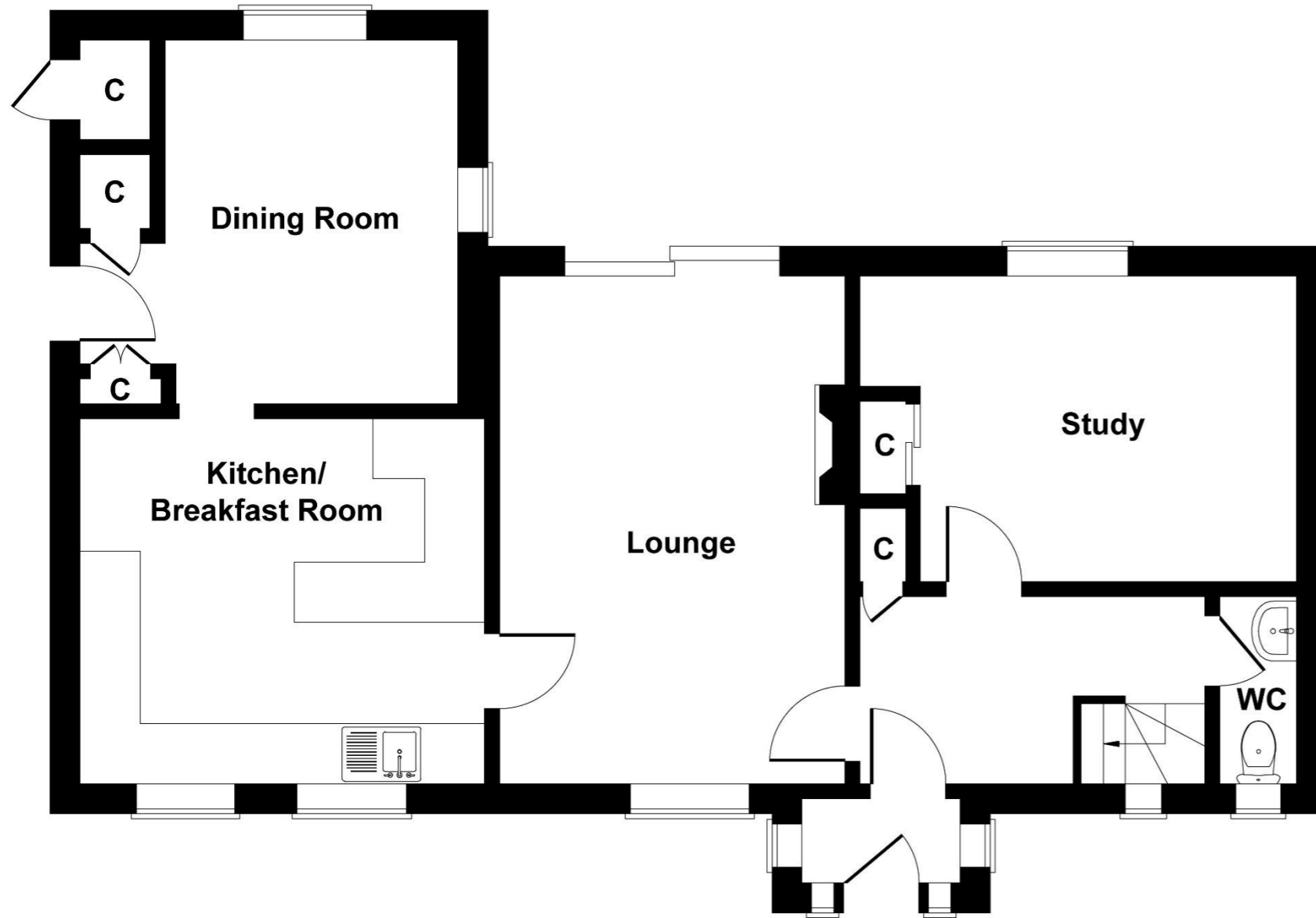
**Bedroom 3 10'4" (3.15m) x 6'10" (2.08m)** - Currently arranged with desk and storage, perfect as child's room.

**Bathroom** - Contemporary family bathroom with modern tiling, panelled bath with shower over, glass screen, basin and WC.

**Garden** - Large front garden being predominately laid to lawn and bounded by hedging with mature trees and bushes, long driveway providing ample parking.

The large rear garden also enjoys hedging either side with an area through the middle ideal for growing your own vegetables or plants, patio area adjacent to the rear of the property. 2 timber sheds to the top of the garden.

# 5 Haycombe



**GROUND FLOOR**

**FIRST FLOOR**

Not to Scale. Produced by The Plan Portal 2026  
For Illustrative Purposes Only.

Please note Forum Sales & Lettings and their client give notice that:

1. They have no authority to make or give any representation or warranties in relations to the property. These particulars do not form part of any offer or contract and must not be relied upon as statements or representations of fact.

2. Any areas, common measurements or distances are approximate. The text, photographs and plans are for guidance only and are not necessarily comprehensive. It should not be assumed that the property has all necessary Planning, Building Regulations or other consents and Forum Sales and Lettings have not tested any services, equipment or facilities. Purchasers must satisfy themselves by inspection or otherwise.

EPC Rating - C

Viewing Arrangements - Strictly by appointment with Forum Sales & Lettings

15 Salisbury Street, Blandford Forum, Dorset, DT11 7AU

Tel: 01258 459600

