



6 Richmond Road, Blandford Forum, Dorset, DT11 7NH



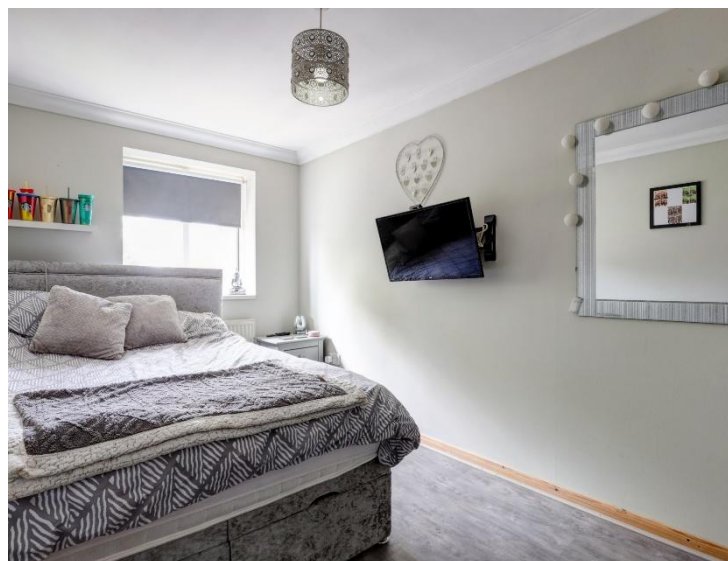


A generously proportioned four bedroom family home on Richmond Road, offering spacious interiors, superb bedroom sizes.

Situated on the sought-after Richmond Road, this well-appointed family home offers generous living space and impressively proportioned bedrooms, making it ideal for growing families or those seeking versatile accommodation.

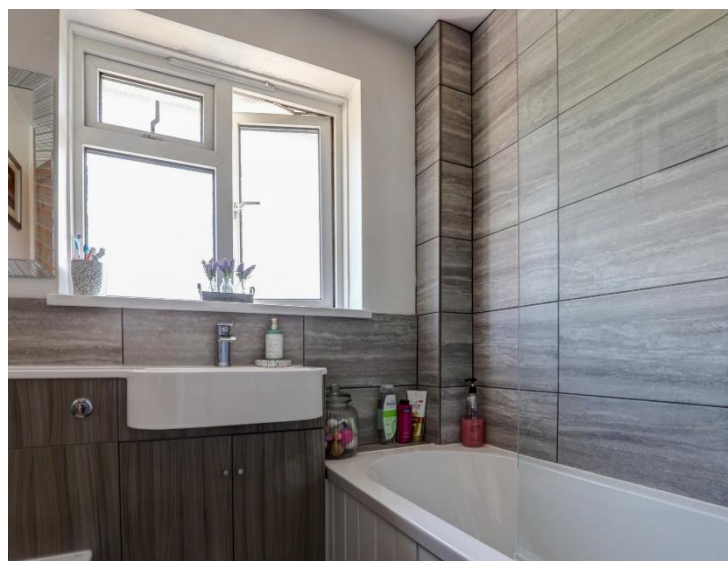
The ground floor welcomes you with a bright and spacious kitchen/dining room, perfect for entertaining, complete with light cabinetry, tiled flooring, and a central dining area. A cozy lounge with wooden flooring, a feature wall with a mounted TV above an electric fireplace, and stylish décor provides a relaxing retreat. A convenient ground floor shower room adds practicality.

Upstairs, the property truly shines with its bedroom sizes. The principal bedroom is a substantial double, comfortably accommodating larger furniture. The second, third and fourth bedrooms are also excellent doubles, offering ample space for children, guests, or even a home office setup. The modern family bathroom is finished with sleek grey tiling and a wooden vanity unit, creating a calm and contemporary space.



Outside, the rear garden is a delightful mix of lawn and patio, featuring a raised deck with a pergola and seating area—ideal for summer gatherings. A wooden shed and mature planting add charm and functionality. The front of the property boasts a gravel driveway with attractive greenery, including a palm tree, enhancing the home's kerb appeal.

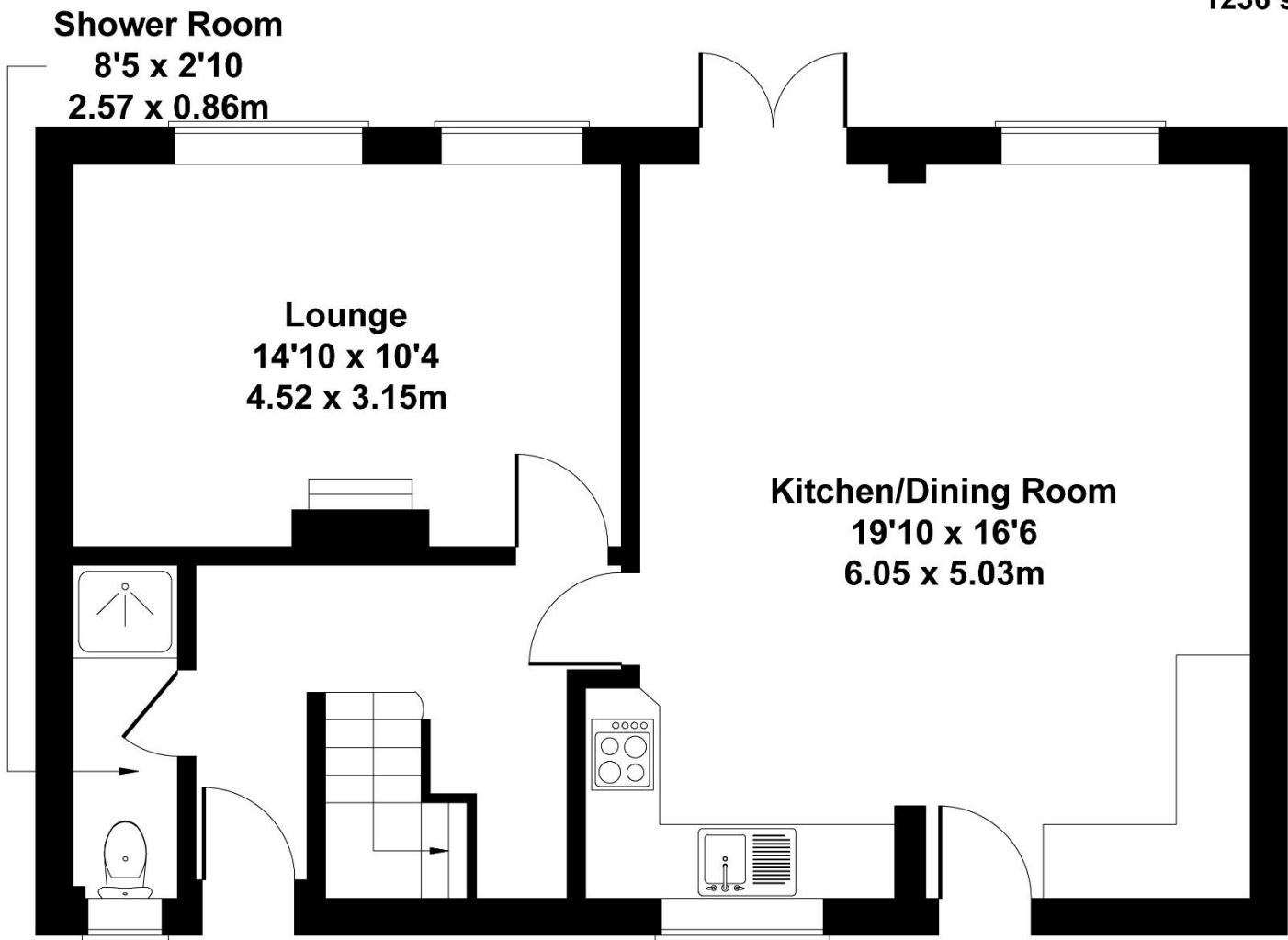
This is a fantastic opportunity to acquire a spacious and stylish home in a desirable location, with room to grow and enjoy for years to come.



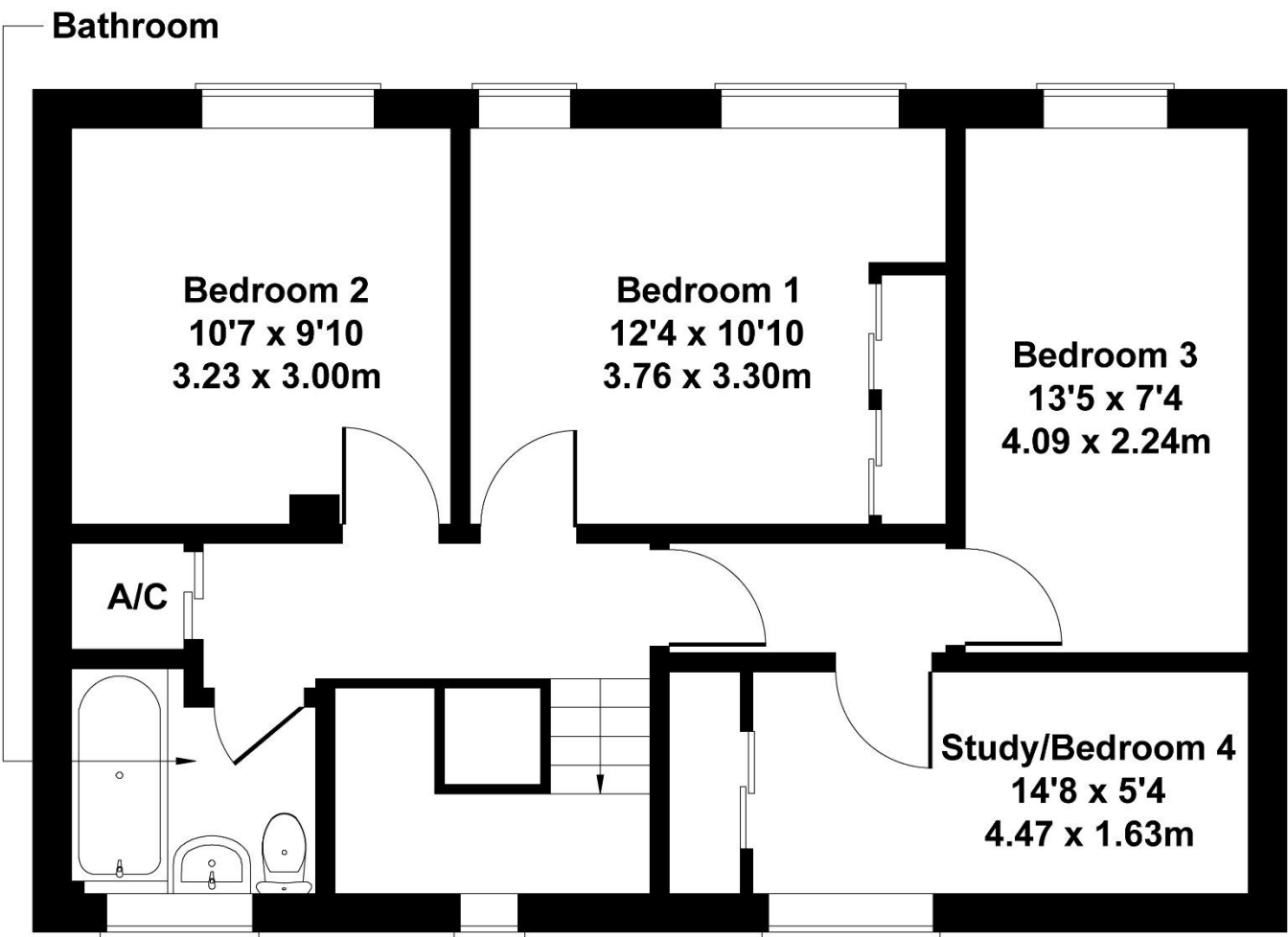
£340,000 Freehold

6 Richmond Road

Approximate Gross Internal Area
1236 sq ft - 115 sq m



GROUND FLOOR



FIRST FLOOR

Not to Scale. Produced by The Plan Portal 2025
For Illustrative Purposes Only.

Please note Forum Sales & Lettings and their client give notice that:

1. They have no authority to make or give any representation or warranties in relations to the property. These particulars do not form part of any offer or contract and must not be relied upon as statements or representations of fact.
2. Any areas, common measurements or distances are approximate. The text, photographs and plans are for guidance only and are not necessarily comprehensive. It should not be assumed that the property has all necessary Planning, Building Regulations or other consents and Forum Sales and Lettings have not tested any services, equipment or facilities. Purchasers must satisfy themselves by inspection or otherwise.

EPC Rating - TBC

Viewing Arrangements - Strictly by appointment with Forum Sales & Lettings

15 Salisbury Street, Blandford Forum, Dorset, DT11 7AU

Tel: 01258 459600

