



10 Counter Close, Blandford Forum, Dorset, DT11 7XJ









**A stunning, three bedroom Semi-Detached house benefiting from a ground floor extension to the rear, situated in this popular cul-de-sac backing onto the recreational ground known as Larksmead.**

Nestled in one of Blandford's most popular residential areas, this beautifully presented three-bedroom semi-detached home offers stylish living with practical family comfort. Backing directly onto the open green spaces of Larksmead, this property enjoys a peaceful setting with convenient access to local amenities, schools, and countryside walks.

The ground floor welcomes you with a spacious entrance hall leading into a bright and airy lounge. To the rear, a modern open-plan kitchen/diner features tasteful cabinetry, integrated appliances, and a seamless flow into a stunning garden room—bathed in natural light thanks to a skylight and French doors opening onto the private rear garden.

Upstairs, the home offers three well-proportioned bedrooms, including a generous main bedroom and a contemporary family bathroom. Additional storage is provided by multiple cupboards and a fitted wardrobe.

Externally, the property boasts a detached garage, a private driveway with ample parking, and a low-maintenance rear garden ideal for outdoor entertaining or quiet enjoyment.

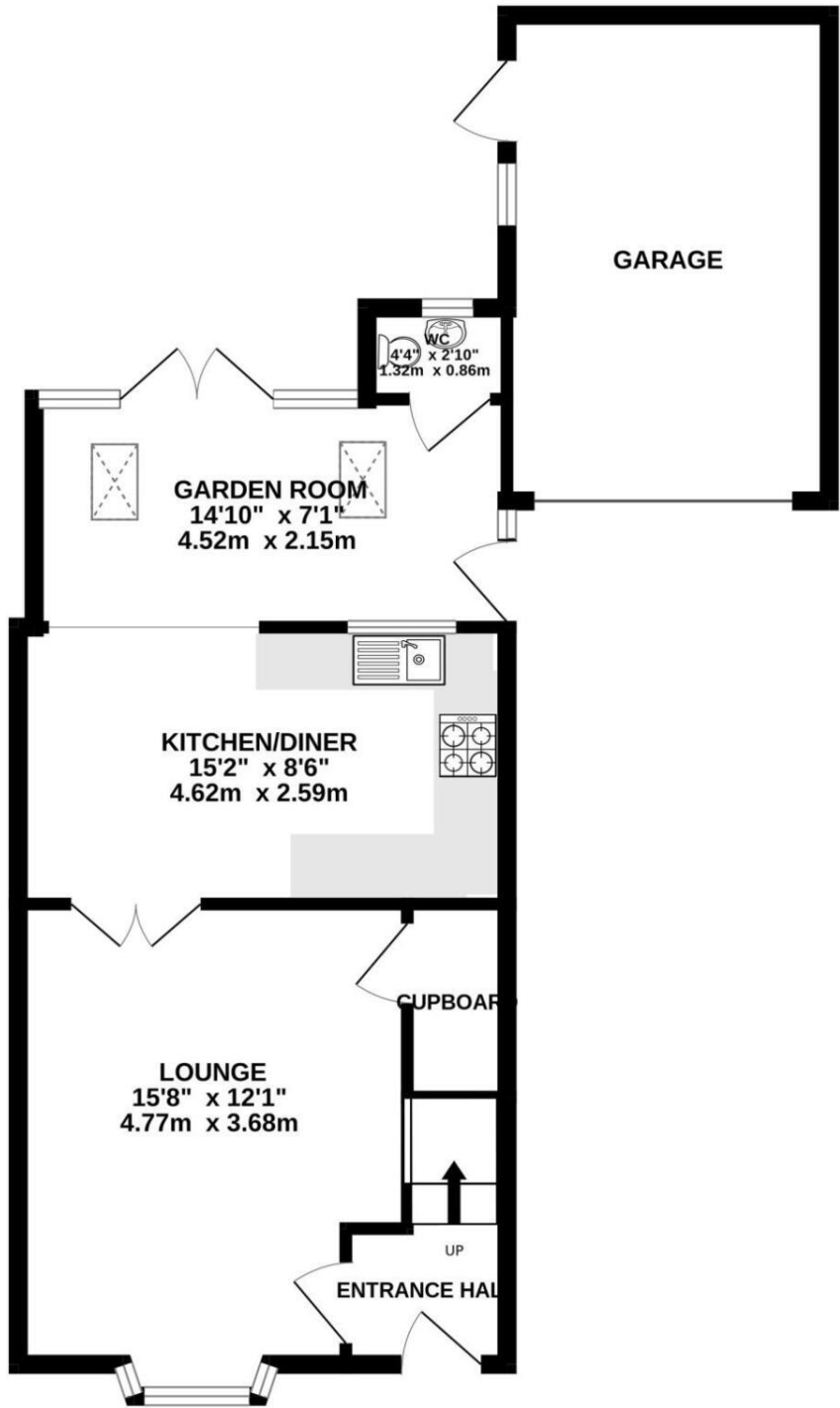
The rear boundary backs onto Larksmead, offering a rare blend of privacy and open space.

This is an exceptional opportunity to acquire a move-in-ready home in a highly desirable location. Early viewing is highly recommended.

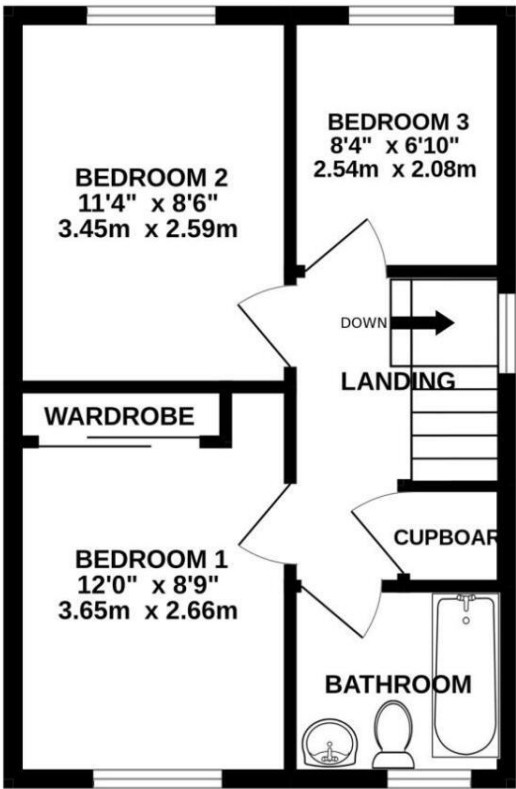


£345,000 Freehold

GROUND FLOOR



1ST FLOOR



Whilst every attempt has been made to ensure the accuracy of the floorplan contained here, measurements of doors, windows, rooms and any other items are approximate and no responsibility is taken for any error, omission or mis-statement. This plan is for illustrative purposes only and should be used as such by any prospective purchaser. The services, systems and appliances shown have not been tested and no guarantee as to their operability or efficiency can be given.  
Made with Metropix ©2025

Please note Forum Sales & Lettings and their client give notice that:

- 1. They have no authority to make or give any representation or warranties in relations to the property. These particulars do not form part of any offer or contract and must not be relied upon as statements or representations of fact.
- 2. Any areas, common measurements or distances are approximate. The text, photographs and plans are for guidance only and are not necessarily comprehensive. It should not be assumed that the property has all necessary Planning, Building Regulations or other consents and Forum Sales and Lettings have not tested any services, equipment or facilities. Purchasers must satisfy themselves by inspection or otherwise.

EPC Rating - C

Viewing Arrangements - Strictly by appointment with Forum Sales & Lettings

15 Salisbury Street, Blandford Forum, Dorset, DT11 7AU

Tel: 01258 459600

