



8 Charlton Manor, Charlton Marshall, Dorset, DT11 9NY





**Impressive modern 4 bedroom chalet home set behind electric gates, offering generous living space, stylish interiors and beautiful gardens in a peaceful village setting.**

**Hallway** - Welcoming central hall with tiled flooring, understairs storage and timber staircase rising to the first floor landing.

**Sitting Room 23'0" (7m) x 13'8" (4.16m)** - Bright, dual-aspect reception with contemporary decor, feature media wall, inset lighting and French doors opening to the sun deck and lawned rear garden.

**Dining Room 19'0" (5.78m) x 12'0" (3.65m)** - Well-proportioned formal dining space adjoining the main living room, ideal for entertaining and enjoying views towards the rear garden.

**Kitchen/Breakfast Room 19'3" (5.86m) x 16'3" (4.96m)** - Stylish country-style kitchen with central island, stone-effect flooring, extensive cabinetry, integrated appliances and generous breakfast/dining area with doors to the driveway.

**Bedroom 2 16'7" (5.05m) x 13'8" (4.16m)** - Large ground floor double bedroom with fitted storage options and en suite shower room, perfect as a guest suite or alternative main bedroom.

**En-suite (Bedroom 2)** - Modern shower room serving the ground floor guest bedroom, with corner shower enclosure, WC and vanity storage.

**Bedroom 4/Office 13'0" (3.97m) x 10'2" (3.11m)** - Versatile double room currently arranged as a home office and hobby space, enjoying views to the front garden and driveway.

**Utility 9'5" (2.86m) x 5'4" (1.62m)** - Practical laundry room with worktops, sink, storage cupboards and external door, set conveniently off the inner hall and close to the kitchen.

**WC** - Ground floor cloakroom with modern white suite and tiled walls, accessed from the central reception hall.

**Bedroom 1 19'9" (6.02m) x 17'0" (5.18m)** - Expansive principal suite with ample space for additional furniture, lovely garden outlook and access to a private en suite and fitted dressing room.

**Bedroom 3 19'6" (5.95m) x 11'8" (3.56m)** - Generous first floor double bedroom with dormer window, neutral decor and easy access to the family bathroom.

**En-suite (Bedroom 1)** - Stylish en suite to the main bedroom with bath, separate shower, vanity basin and WC, complemented by fully tiled walls.

**Dressing Room 12'8" (3.87m) x 11'5" (3.47m)** - Dedicated dressing space with sloping ceiling, fitted wardrobes and window to the side, serving the main bedroom suite.

**Bathroom** - First floor family bathroom fitted with panelled bath, separate shower, wash basin and WC, finished with neutral tiling.

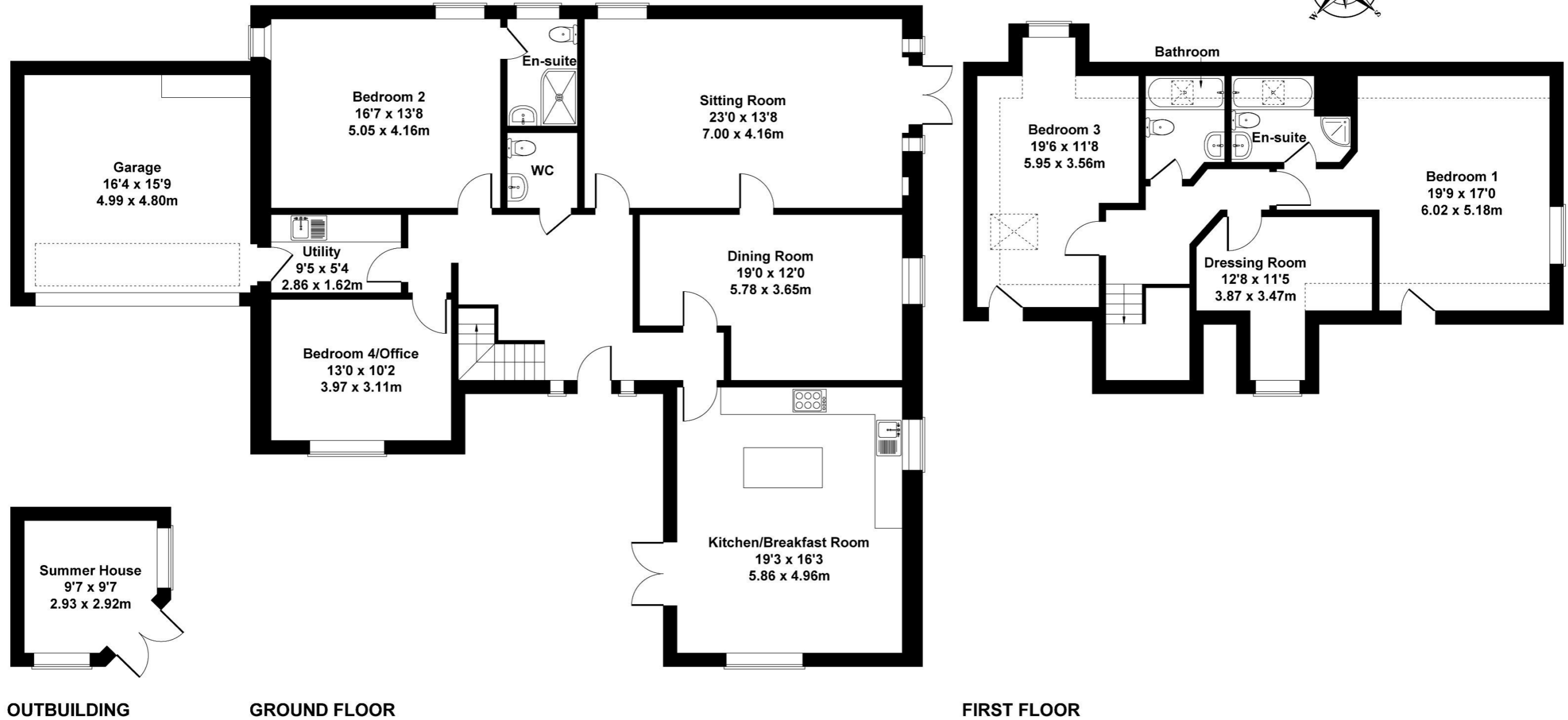
**Garage 16'4" (4.98m) x 15'9" (4.8m)** - Substantial attached garage with remote up-and-over door, power and lighting, approached via a block-paved gated driveway.

**Outside** - The property is accessed via electric gates with brick-paved driveway providing ample parking and leads to the integral double garage with electric doors. The wrap garden predominately to the front and side of the property and are bordered by mature hedging and laid to lawn with well-stocked shrub borders, established trees palm tree. Decked seating area which can be accessed via the sitting room. The garden also features a summer house (electric connected, ) wooden shed & greenhouse



# 8 Charlton Manor

Approximate Gross Internal Area  
2702 sq ft - 251 sq m



Not to Scale. Produced by The Plan Portal 2026  
For Illustrative Purposes Only.

Please note Forum Sales & Lettings and their client give notice that:

1. They have no authority to make or give any representation or warranties in relations to the property. These particulars do not form part of any offer or contract and must not be relied upon as statements or representations of fact.

2. Any areas, common measurements or distances are approximate. The text, photographs and plans are for guidance only and are not necessarily comprehensive. It should not be assumed that the property has all necessary Planning, Building Regulations or other consents and Forum Sales and Lettings have not tested any services, equipment or facilities. Purchasers must satisfy themselves by inspection or otherwise.

EPC Rating - C

Viewing Arrangements - Strictly by appointment with Forum Sales & Lettings

15 Salisbury Street, Blandford Forum, Dorset, DT11 7AU

Tel: 01258 459600

