



20 ARDEN COURT, NORTHALLERTON
NORTH YORKSHIRE, DL6 1EW

20 ARDEN COURT

Northallerton, North Yorkshire, DL6 1EW

Charming first-floor apartment boasting 1 bedroom in a convenient location. This inviting property offers a homely feel with access to communal gardens. Perfect for retirement living. Ideal for those seeking a peaceful lifestyle.

- One Bedroom Apartment
- Conveniently located close to Northallerton town centre
- House Manager
- First floor

Guide Price £82,000

IMPORTANT NOTE: Consumer Protection from Unfair Trading Regulations 2008 and the Business Protection from Misleading Marketing Regulations 2008: We endeavour to make our sales particulars accurate and reliable. They should be considered as general guidance only and do not constitute all or any part of the contract. None of the services, fittings and equipment have been tested. Measurements, where given, are approximate and for descriptive purposes only. Boundaries cannot be guaranteed and must be checked by solicitors prior to exchange of contracts. Prospective buyers and their advisers should satisfy themselves as to the facts, and before arranging an inspection, availability. Further information on points of particular importance can be provided. No person in the employment of youngsRPS (NE) Ltd has any authority to make or give any representation or warranty whatever in relation to this property.





DESCRIPTION

Presenting this luxurious first-floor apartment in a sought-after location. The apartment boasts modern and bright interiors, creating a comfortable and inviting living space. Enjoy the convenience of communal gardens, perfect for relaxing or entertaining visitors. Situated in a convenient location, this property offers easy access to local amenities, transport links, and leisure facilities. Ideal for those looking for a homely retreat in a vibrant neighbourhood. This apartment is perfect for retirees looking for a peaceful and secure living environment. Don't miss out on the opportunity to make this beautiful property your new home. Book a viewing today!

LOCATION

Situated within the popular market town of Northallerton, within walking distance of all the facilities and amenities the town has to offer. The thriving market town has a weekly market which has been running since it was chartered in 1200. The bustling High Street is home to many independent businesses from delicatessens, greengrocers and department stores with larger chains also available. There are ample facilities to make use of including sports clubs, restaurants, pubs, theatre, bowling alley and cinema.

Ideally situated between The Yorkshire Dales National Park and The North Yorkshire National Park, Northallerton is also conveniently located for commuters who can make use of the excellent road and rail networks giving convenient access to Darlington, Newcastle, York, Leeds and beyond; making it the perfect location for those that enjoy both country and metropolitan pursuits.

Viewings

Viewings are strictly by appointment. Please contact the agent on 01609 773004.

Services

Mains electricity, water, drainage are connected. Electric heating.

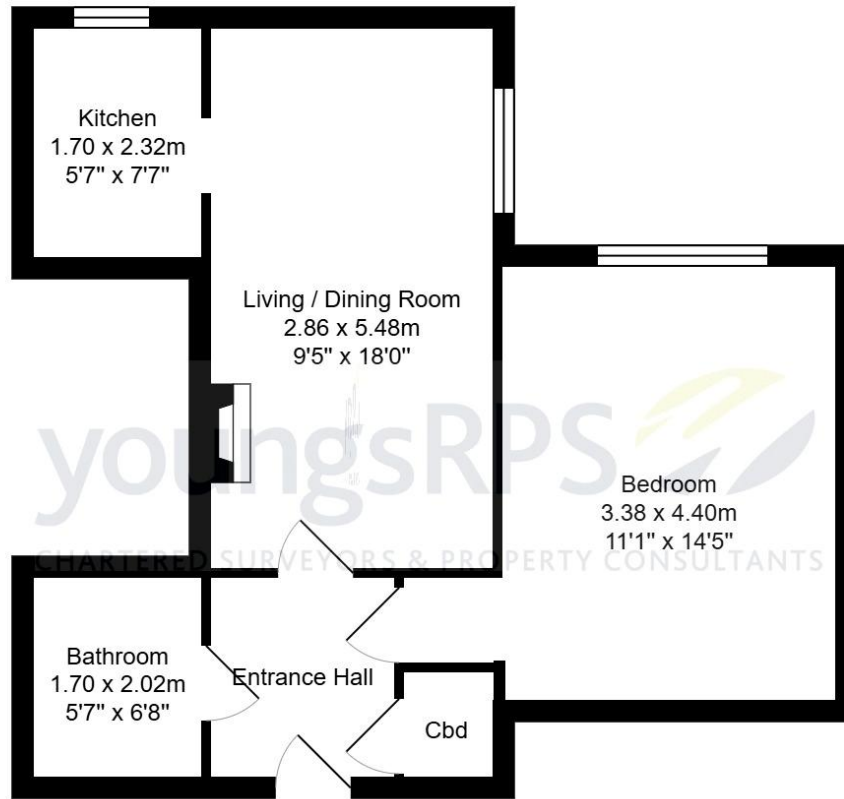
Tenure

The property is leasehold.

Charges

North Yorkshire Council Tax Band B.





All measurements are approximate and for display purposes only.