



SARAH CLARK
PROPERTY CONSULTANTS

6 |
COWPER ROAD, BRISTOL, BS6 6NY

Available Now! This is a very well presented maisonette in a great location just off the popular Chandos Road in Redland.

Beautifully presented the accommodation consists of: on the hall floor level - a lounge to the front of the property with neutral decoration, feature fireplace and bay window - this is a lovely space to relax and unwind after a busy day.

To the rear is a good sized kitchen/dining room with patio doors on to a private balcony area. The stylish kitchen is fully equipped and includes plenty of storage with a range of wall and base units and a built-in cupboard, the integrated appliances include an electric oven and gas hob, dishwasher and washing machine and a large fridge freezer.

Upstairs are two good size double bedrooms. The master bedroom to the front of the property has an en-suite shower room. The second double bedroom is to the rear of the property along with a family bathroom with bath with shower over, wc and basin.

This is a very high quality, nicely presented and spacious maisonette. It would suit a professional family or maximum two professional sharers.



Features

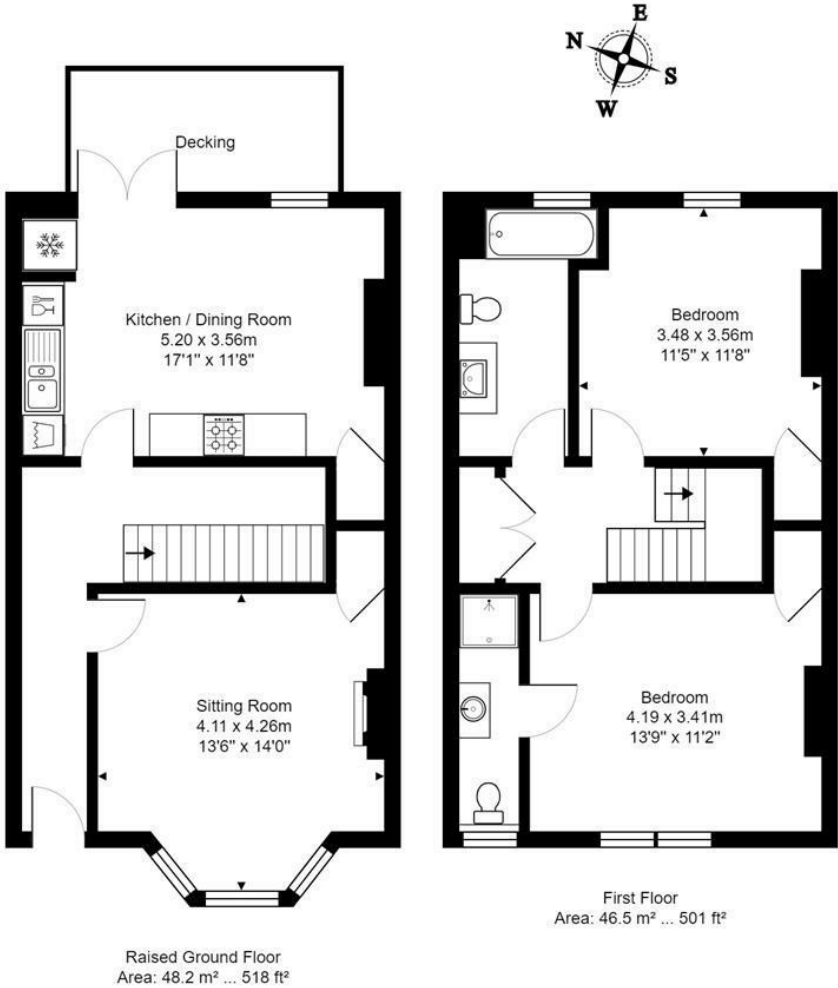
- Available Now
- Well Presented Maisonette
- 2 Double Bedrooms
- Two Bathrooms
- Fully Equipped Kitchen
- Private Roof Terrace





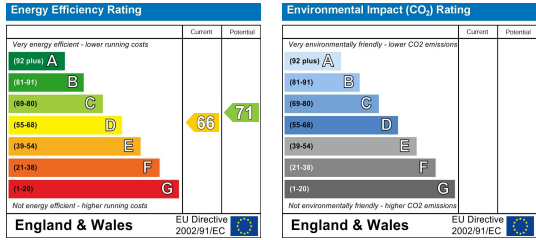
Customise to type text here

Customise to type text here



Total Area: 94.7 m² ... 1019 ft² (excluding decking)

All measurements of walls, doors, windows, fittings and appliances, their size and locations are approximate and cannot be regarded as being an accurate representation neither by the vendor nor their agent.
www.inovusproperty.co.uk



IMPORTANT: we would like to inform prospective purchasers that these sales particulars have been prepared as a general guide only. A detailed survey has not been carried out, nor the services, appliances and fittings tested. Room sizes should not be relied upon for furnishing purposes and are approximate. If floor plans are included, they are for guidance only and illustration purposes only and may not be to scale. If there are any important matters likely to affect your decision to buy, please contact us before viewing the property.