



**SARAH CLARK**  
PROPERTY CONSULTANTS

FLAT 11, 37 |  
PARK HILL, BRISTOL, BS11 0UH

Available May 2026. This fully furnished one bedroom apartment would be perfect for one professional or a professional couple. It is situated in a great location close to all the amenities in Shirehampton village and with easy access to transport networks, the local train station and the Portway giving access into Bristol City Centre.

The apartment is situated on the first floor and the accommodation consists of a bright kitchen/lounge with impressive views over Shirehampton and out to the surrounding countryside. The newly fitted kitchen has a range of wall and base units, an integrated fridge and freezer, electric oven and hob, and a washing machine.

The bedroom is to the rear of the property and has a built-in storage cupboard and door to the bathroom. The bathroom has a bath with shower over, wc and basin.

This well-kept development has communal gardens and outside drying facilities. There is also an allocated parking space.

Rent = £1050

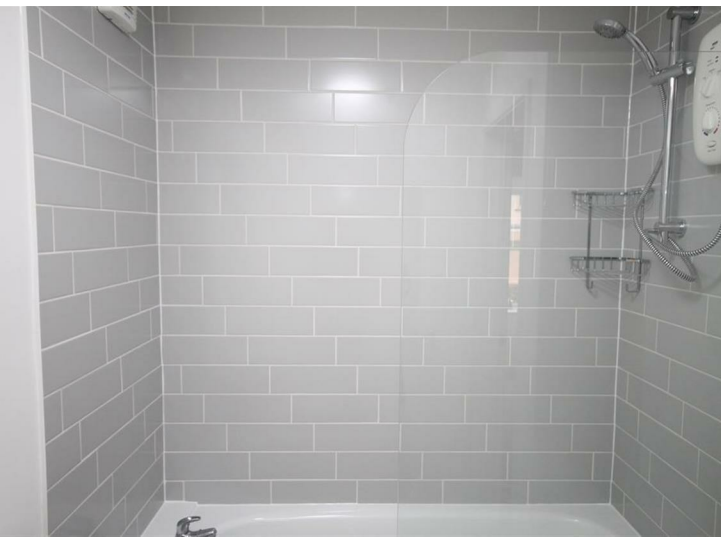
Available Now!



## Features

- Available May 2026
- Fully Furnished
- Shirehampton Village
- Allocated parking
- Communal gardens





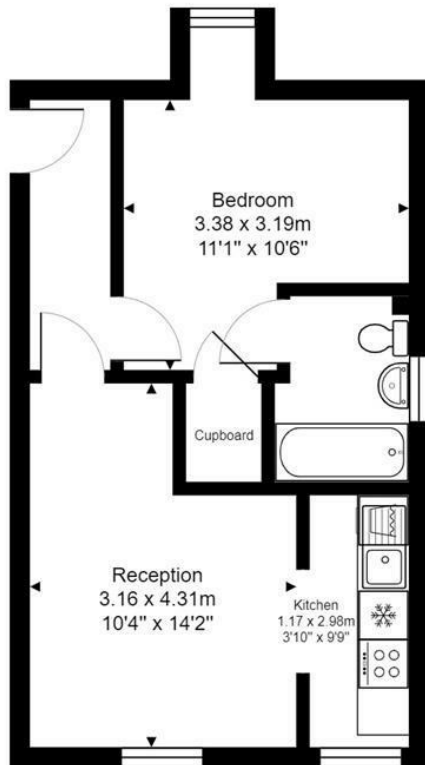
TENURE

SERVICES

Customise to type text here

LOCAL AUTHORITY

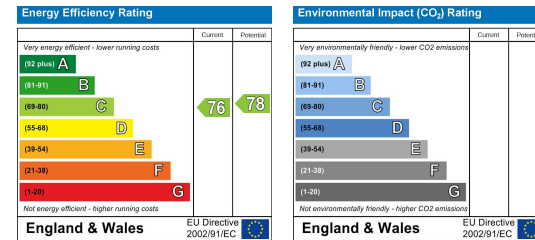
Customise to type text here



First Floor

Total Area: 35.0 m<sup>2</sup> ... 377 ft<sup>2</sup>

All measurements of walls, doors, windows, fittings and appliances, their size and locations are approximate and cannot be regarded as being an accurate representation neither by the vendor nor their agent.  
www.inovusproperty.co.uk



IMPORTANT: we would like to inform prospective purchasers that these sales particulars have been prepared as a general guide only. A detailed survey has not been carried out, nor the services, appliances and fittings tested. Room sizes should not be relied upon for furnishing purposes and are approximate. If floor plans are included, they are for guidance only and illustration purposes only and may not be to scale. If there are any important matters likely to affect your decision to buy, please contact us before viewing the property.