



SARAH CLARK
PROPERTY CONSULTANTS

19 |
VICTORIA SQUARE, BRISTOL, BS8 4ES

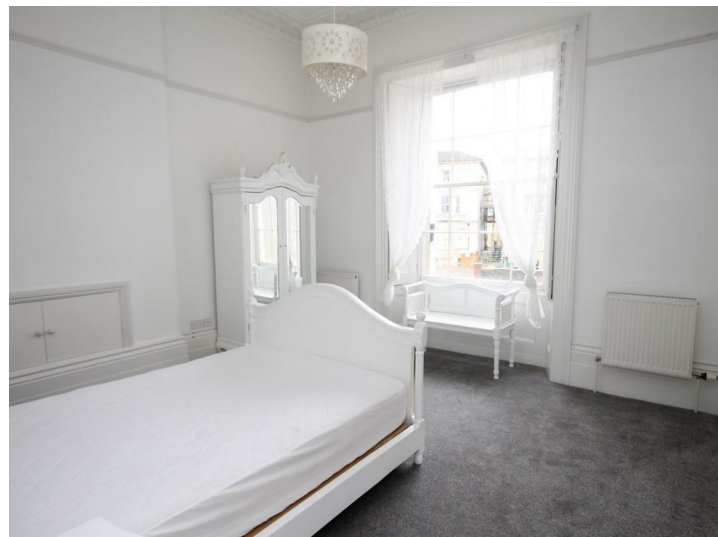
A beautiful 2 double bedroom flat in Victoria Square, Clifton Village available part-furnished. With Private Parking and Garden. This spacious hall floor flat is set in the beautiful surroundings of Victoria Square which is close to all the boutique shops, restaurants and amenities which make Clifton Village such a lovely place to live.

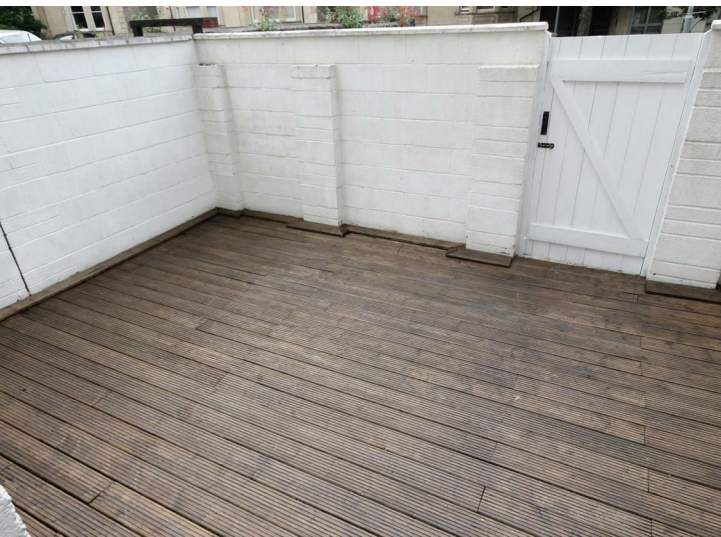
The flat is stylishly presented with an extremely large lounge/dining room with period features. There is a modern well equipped kitchen with gas hob, electric oven, Smeg fridge, dishwasher and washing machine. Two double bedrooms are to the rear of the property along with a modern bathroom with a roll-top bath and shower attachment over. The second bedroom has doors which lead out to steps to a private decked courtyard garden. There is private parking to the rear of the property which would fit two cars (tandem).



Features

- Private courtyard
- Off-street parking
- Period features
- Clifton Village location





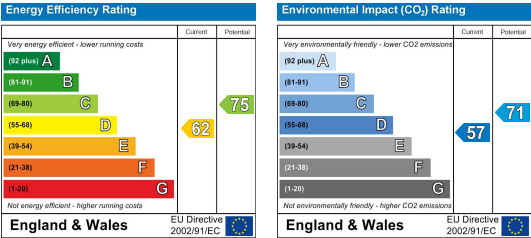
TENURE

SERVICES

Customise to type text here

LOCAL AUTHORITY

Customise to type text here



IMPORTANT: we would like to inform prospective purchasers that these sales particulars have been prepared as a general guide only. A detailed survey has not been carried out, nor the services, appliances and fittings tested. Room sizes should not be relied upon for furnishing purposes and are approximate. If floor plans are included, they are for guidance only and illustration purposes only and may not be to scale. If there are any important matters likely to affect your decision to buy, please contact us before viewing the property.