

APSLEY WAY, INGLEBY BARWICK, STOCKTON-ON-TEES, TS17 5GD



- ▲ A sensibly priced, four bedroom detached family home with accommodation laid out over three floors
- ▲ Enjoying a pleasant corner position with gardens to front and rear, driveway and single garage
- ▲ Nicely presented Lounge with front bay window
- ▲ Full width kitchen/diner with a generous range of fitted units and built in range style oven
- ▲ Double glazed conservatory with insulated solid roof and double doors opening to the rear garden
- ▲ Utility room and ground floor cloakroom/WC
- ▲ Three bedrooms on the first floor with the master having a redesigned en-suite, together with a family bathroom with white suite
- ▲ Spacious double bedroom on the second floor
- ▲ Gas central heating system and double glazing

£259,950

www.michaelpoole.co.uk

Michael Poole
sales | lettings | auctions



A sensibly priced, four bedroom detached family home with accommodation laid out over three floors enjoying a pleasant corner position with gardens to front and rear, driveway and single garage.

GROUND FLOOR

ENTRANCE HALLWAY

CLOAKROOM/WC

LOUNGE - 4.70m (15'5") into bay window x 3.98m (13'1")

KITCHEN/DINER - 5.47m (17'11") x 3.71m (12'2") reducing to 3.01m (9'11")

UTILITY ROOM - 1.70m x 1.61m (5'7" x 5'3")

FIRST FLOOR

LANDING

BEDROOM ONE - 3.99m x 3.42m (13'1" x 11'3")

EN-SUITE SHOWER ROOM - 1.69m x 1.45m (5'7" x 4'9")

BEDROOM TWO - 3.04m (10') x 2.33m (7'8") to robes
Fitted wardrobes.

BEDROOM THREE - 3.06m x 2.43m (10' x 8')

BATHROOM - 2.45m x 2.28m (8' x 7'6")

TO VIEW: Tel: 01642 763636

Myton Park, Myton Road, Ingleby Barwick, TS17 0WA

www.michaelpoole.co.uk



APSLEY WAY, TS17 5GD

SECOND FLOOR

LANDING AREA

With built in cupboard.

BEDROOM FOUR - 4.20m x 3.34m (13'9" x 10'11")

EXTERNALLY

GARDENS, PARKING & GARAGE

Garden area to the front. The rear garden is enclosed and mainly laid to lawn with a decked seating area. A rear driveway provides off street parking and leads to the single garage with up and over door, power points and lighting.

AGENTS REF: - DC/LS/YAR250367/16022026

Council Tax Band: D **Tenure:** Freehold

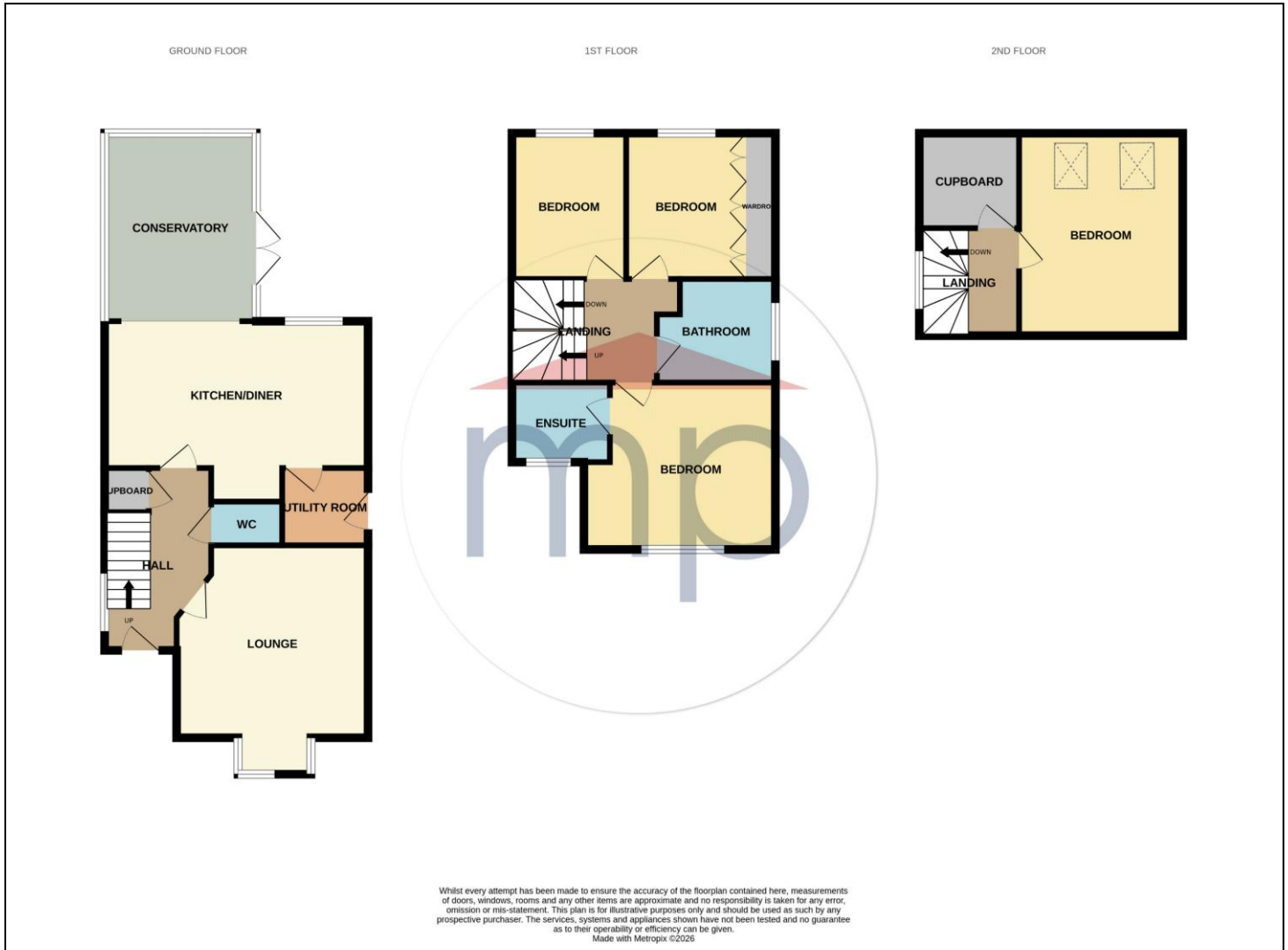
TO VIEW: Contact our Ingleby Barwick office on

Tel: 01642 763636



APSLEY WAY, TS17 5GD





Whilst every attempt has been made to ensure the accuracy of the floorplan contained here, measurements of doors, windows, rooms and any other items are approximate and no responsibility is taken for any error, omission or mis-statement. This plan is for illustrative purposes only and should be used as such by any prospective purchaser. The services, systems and appliances shown have not been tested and no guarantee as to their operability or efficiency can be given.
Made with Metropix ©2025

The information provided about this property does not constitute or form part of an offer or contract, nor may it be regarded as representations. All interested parties must verify accuracy and your solicitor must verify tenure and lease information, fixtures and fittings and, where the property has been recently constructed, extended or converted, that planning/building regulation consents are in place. All dimensions are approximate and quoted for guidance only, as are floor plans which are not to scale, and their accuracy cannot be confirmed. Reference to appliances and/or services does not imply that they are necessarily in working order or fit for the purpose. We offer our clients an optional conveyancing service, through panel conveyancing firms, via MWU and we receive on average a referral fee of one hundred and thirty pounds, only on completion of the sale. If you do use this service, the referral fee is included within the amount that you will be quoted by our suppliers. All quotes will also provide details of referral fees payable.

Score	Energy rating	Current	Potential
92+	A		
81-91	B		
69-80	C	73 C	77 C
55-68	D		
39-54	E		
21-38	F		
1-20	G		



TO VIEW: Contact our Ingleby Barwick Office on Tel: **01642 763636**
Myton Park, Myton Road, Ingleby Barwick, TS17 0WA

www.michaelpoole.co.uk

Michael Poole

sales | lettings | auctions