

# WOLSINGHAM DRIVE, THORNABY, STOCKTON-ON-TEES, TS17 9EG



- ▲ Sold with a Tenant in Situ
- ▲ Perfect Ready to Go Rental House
- ▲ Three Bedroom Semi Detached
- ▲ Off Street Parking on the Driveway

- ▲ Gas Central Heating with Combi Boiler
- ▲ Extended Kitchen/Diner

**£140,000**

[www.michaelpoole.co.uk](http://www.michaelpoole.co.uk)

**Michael Poole**  
sales | lettings | auctions



This three bedroom semi-detached house is offered to the market with a tenant in situ and is an ideal purchase if you are looking for a ready to go rental house.

The property features entrance hall, front lounge and extended kitchen/diner. The first floor has three bedrooms and bathroom. Outside there is a front garden, driveway and well-presented rear garden.

Other features include gas central heating and UPVC double glazing.

### GROUND FLOOR

#### ENTRANCE HALL

LOUNGE - 4.01m (max) x 3.86m (13'2" (max) x 12'8")

KITCHEN DINER - 4.85m x 3.86m (max) (15'11" x 12'8" (max))

### FIRST FLOOR

#### LANDING

BEDROOM ONE - 3.38m x 2.62m (11'1" x 8'7")

BEDROOM TWO - 3.2m x 2.62m (10'6" x 8'7")

BEDROOM THREE - 2.24m x 2.06m (7'4" x 6'9")

#### BATHROOM

TO VIEW: Tel: 01642 763636

Myton Park, Myton Road, Ingleby Barwick, TS17 0WA

[www.michaelpoole.co.uk](http://www.michaelpoole.co.uk)



WOLSINGHAM DRIVE, TS17 9EG

**EXTERNALLY**

**PARKING & GARDENS**

To the front there is off street parking on a concrete driveway, lawned front garden and side gated access leads to the rear garden with flagstone patio area, concrete patio area and lawn.

**AGENTS REF:** - MH/LS/STO060856/18052026

**Council Tax Band:** B      **Tenure:** Freehold

**TO VIEW:** Contact our Ingleby Barwick office on  
Tel: **01642 763636**



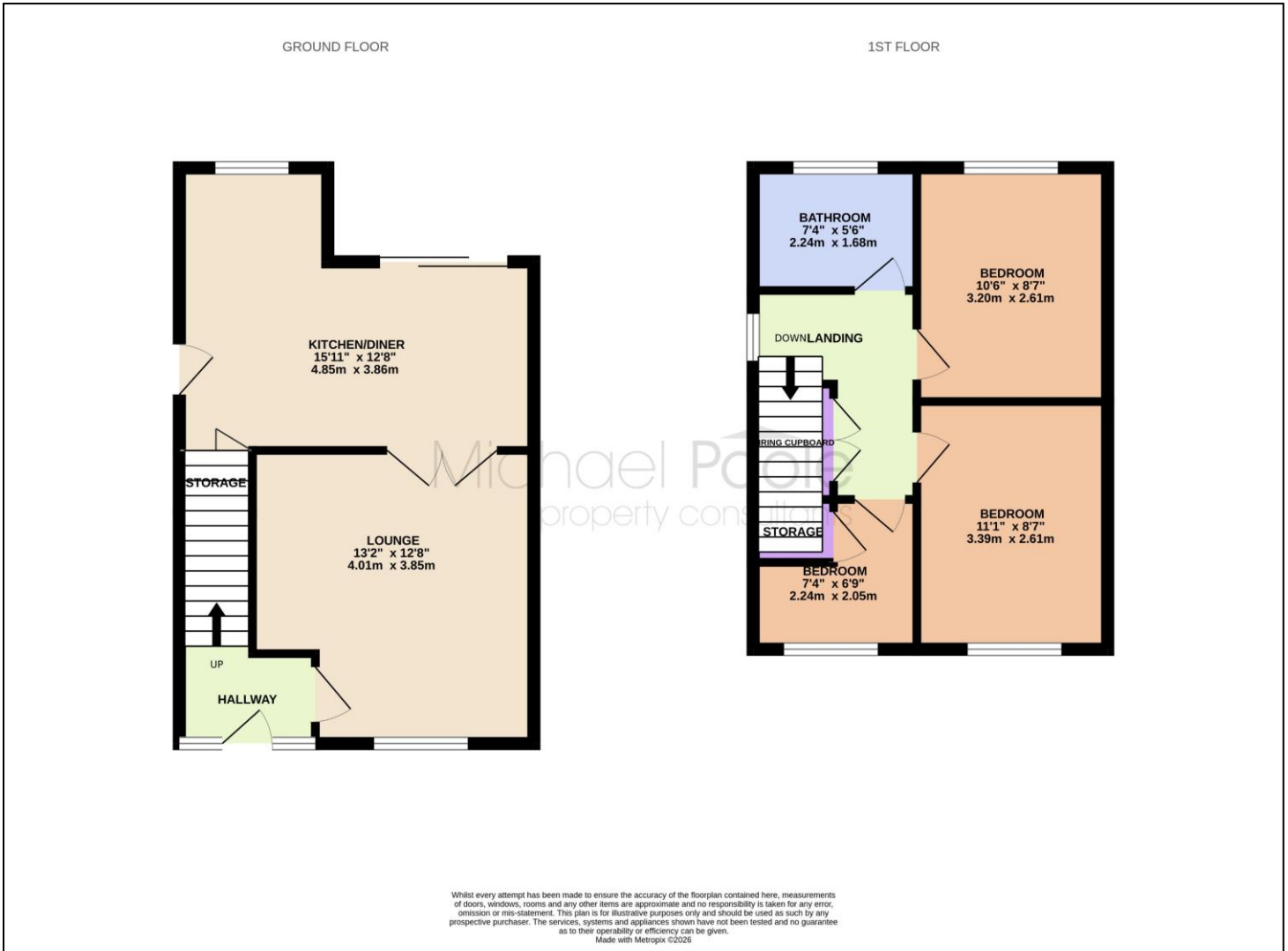
WOLSINGHAM DRIVE, TS17 9EG



A photograph of the exterior of a Michael Poole property consultants storefront at night. The storefront has a blue neon sign that reads "Michael Poole property consultants". The windows are large and display various property listings. The interior is lit up, and the sign is illuminated.

Do you have a property you  
need to sell  
**before** you can buy?

Michael Poole offers **FREE, no obligation**  
market appraisals and gives you guidance  
on the **BEST PRICE** you can expect in the  
current market



The information provided about this property does not constitute or form part of an offer or contract, nor may it be regarded as representations. All interested parties must verify accuracy and your solicitor must verify tenure and lease information, fixtures and fittings and, where the property has been recently constructed, extended or converted, that planning/building regulation consents are in place. All dimensions are approximate and quoted for guidance only, as are floor plans which are not to scale, and their accuracy cannot be confirmed. Reference to appliances and/or services does not imply that they are necessarily in working order or fit for the purpose. We offer our clients an optional conveyancing service, through panel conveyancing firms, via MWU and we receive on average a referral fee of one hundred and thirty pounds, only on completion of the sale. If you do use this service, the referral fee is included within the amount that you will be quoted by our suppliers. All quotes will also provide details of referral fees payable.



**TO VIEW:** Contact our Ingleby Barwick Office on Tel: **01642 763636**  
Myton Park, Myton Road, Ingleby Barwick, TS17 0WA