

ROBERTSON CLOSE, HEMLINGTON, MIDDLESBROUGH, TS8 9GZ



- ▲ A Modern Well Presented Three Bedroom Semi Detached House
- ▲ Built by Taylor Wimpey on This Popular Modern Development in Hemlington
- ▲ Easy Access to the A174, A66 & A19
- ▲ Stunning Open Plan Kitchen Diner to the Rear
- ▲ Separate Lounge
- ▲ Ground Floor WC
- ▲ Master Bedroom with Built-In Wardrobes & En-Suite Shower Room
- ▲ Separate Modern Family Bathroom
- ▲ Driveway to the Side Elevation
- ▲ Generous Size Rear Garden

£175,000

www.michaelpoole.co.uk

Michael Poole
sales | lettings | auctions



A modern three bedroom semi-detached house located on this popular modern development in Hemlington offering easy access to the A174, A66 and A19.

GROUND FLOOR

ENTRANCE

With staircase to the first floor.

LOUNGE - 3.72m x 4.24m (12'2" x 13'11")

GROUND FLOOR WC

With low level WC and wash hand basin.

OPEN PLAN KITCHEN DINER - 4.75m x 2.89m (15'7" x 9'6")

With a modern range of fitted wall and floor units, complementing work surfaces, double oven, gas hob with extractor over, integrated fridge and freezer, slimline dishwasher, plumbing for washing machine, large storage cupboard and French doors open to the rear garden.

FIRST FLOOR

BEDROOM ONE - 2.98m x 3.41m (9'9" x 11'2")

With built-in wardrobes.

EN-SUITE SHOWER ROOM - Modern suite comprising shower cubicle, low level WC and wash hand basin.

BEDROOM TWO - 2.66m x 3.32m (8'9" x 10'11")

BEDROOM THREE - 3.56m (max) x 2.05m (11'8" (max) x 6'9")

BATHROOM

Modern suite comprising bath with shower over and screen, low level WC, wash hand basin and part tiled walls.

TO VIEW: Tel: 01642 955625

95 Guisborough Road, Nunthorpe, TS7 0JS

www.michaelpoole.co.uk



ROBERTSON CLOSE, TS8 9GZ

EXTERNALLY

PARKING & GARDEN

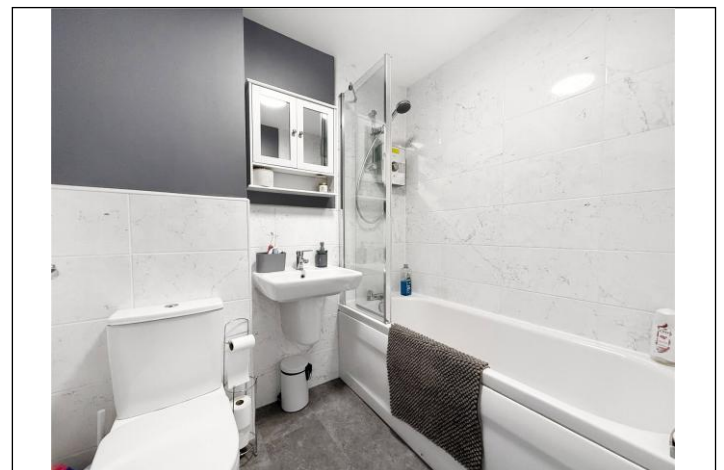
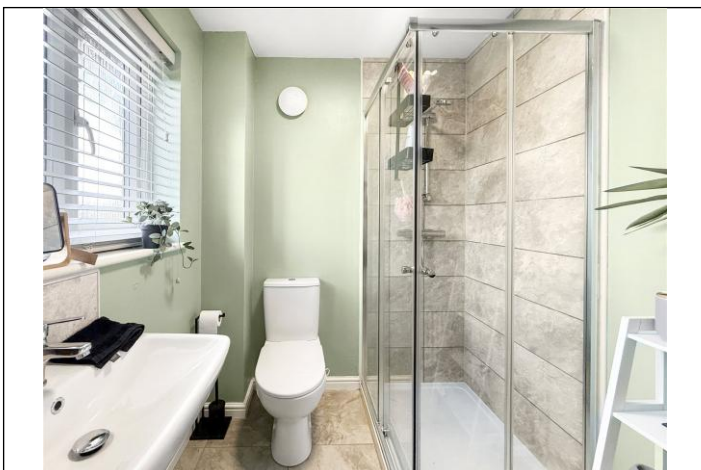
Externally there is a driveway to the side elevation, and a generous rear garden laid to lawn with decked area.

AGENTS REF: - DP/LS/NUN260420/11062026

Council Tax Band: C **Tenure:** Freehold

TO VIEW: Contact our Nunthorpe office on

Tel: **01642 955625**

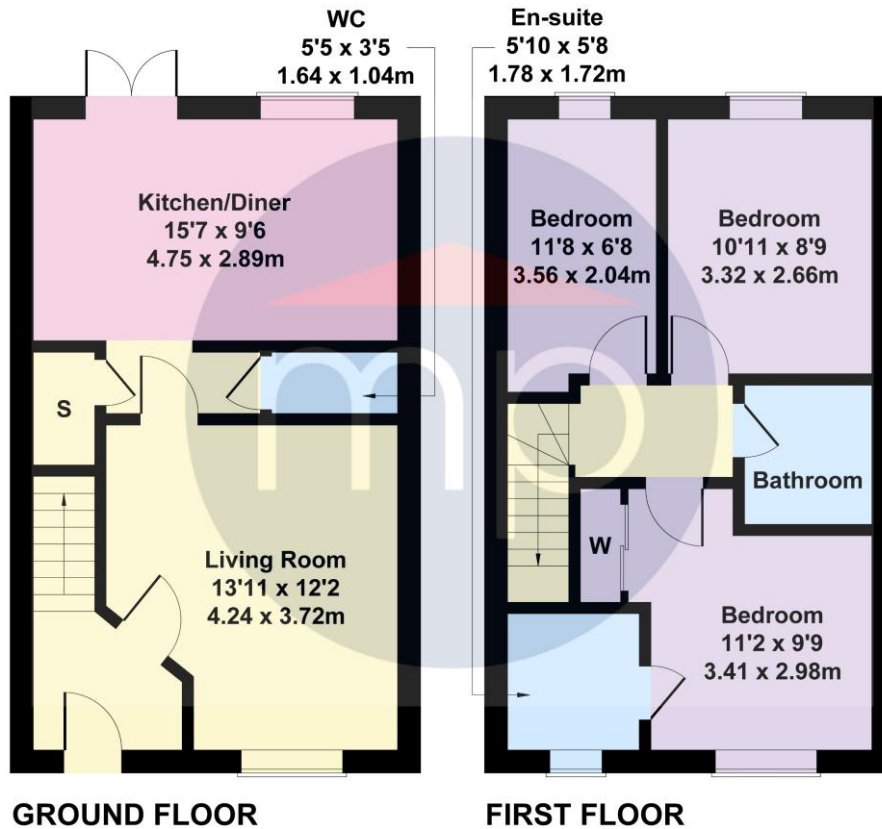


ROBERTSON CLOSE, TS8 9GZ



Robertson Close

Approximate Gross Internal Area
840 sq ft - 78 sq m



Not to Scale. Produced by The Plan Portal 2026
For Illustrative Purposes Only.

The information provided about this property does not constitute or form part of an offer or contract, nor may it be regarded as representations. All interested parties must verify accuracy and your solicitor must verify tenure and lease information, fixtures and fittings and, where the property has been recently constructed, extended or converted, that planning/building regulation consents are in place. All dimensions are approximate and quoted for guidance only, as are floor plans which are not to scale, and their accuracy cannot be confirmed. Reference to appliances and/or services does not imply that they are necessarily in working order or fit for the purpose. We offer our clients an optional conveyancing service, through panel conveyancing firms, via MWU and we receive on average a referral fee of one hundred and thirty pounds, only on completion of the sale. If you do use this service, the referral fee is included within the amount that you will be quoted by our suppliers. All quotes will also provide details of referral fees payable.



TO VIEW: Contact our Nunthorpe Office on Tel: **01642 955625**
95 Guisborough Road, Nunthorpe, TS7 0J5