

THE WICKETS, MARTON, MIDDLESBROUGH, TS7 8EL



- ▲ Offered For Sale with No Forward Chain
- ▲ A Two Bedroom Ground Floor Apartment
- ▲ Two Spacious Reception Rooms
- ▲ Move In Condition
- ▲ Upgraded & Refurbished to a High Standard Throughout
- ▲ Stunning Modern Fitted Kitchen with Integrated Appliances
- ▲ Modern Bathroom
- ▲ Two Generous Size Bedrooms, Master with Walk-In Wardrobe

£145,000

www.michaelpoole.co.uk

Michael Poole
sales | lettings | auctions



Offered for sale with no forward chain, a beautifully presented two bedroom ground floor apartment located within this sought after area of Marton. In move in condition and having been upgraded and refurbished to a high standard throughout with two spacious reception rooms, modern kitchen with integrated appliances, modern bathroom and two generous size bedrooms, master with walk-in wardrobe. Early viewing is advised.

GROUND FLOOR

ENTRANCE PORCH

With tiled floor.

ENTRANCE HALL

With tiled floor.

KITCHEN - 2.74m x 2.66m (9' x 8'9")

A modern fitted kitchen with Corian work surfaces and splashbacks. A range of integrated appliances include a double oven, ceramic induction hob with contemporary extractor over, fridge and freezer, dishwasher and washing machine. Concealed Ideal central heating boiler and tiled walls.

BATHROOM - 1.98m x 1.96m (6'6" x 6'5")

Modern suite comprising P' shaped bath with shower over and screen, floating vanity wash hand basin, floating WC, fully tiled walls and floor, and spotlighting.

LIVING ROOM - 2.74m x 3.94m (9' x 12'11")

STUDY/DINING ROOM - 2.74m x 2.66m (9' x 8'9")

With tiled floor.

BEDROOM ONE - 4.05m x 2.99m (13'3" x 9'10")

With a range of fitted wardrobes and overhead storage.

WALK-IN WARDROBE - 2.37m x 0.99m (7'9" x 3'3")

With tiled floor.

BEDROOM TWO - 3.28m x 2.98m (10'9" x 9'9")

EXTERNALLY

Externally there are communal gardens.

TO VIEW: Tel: 01642 955625

95 Guisborough Road, Nunthorpe, TS7 0JS

www.michaelpoole.co.uk



THE WICKETS, TS7 8EL



PARKING

Allocated parking and visitor parking.

AGENTS NOTE:

Service Charge: £977.27 PA

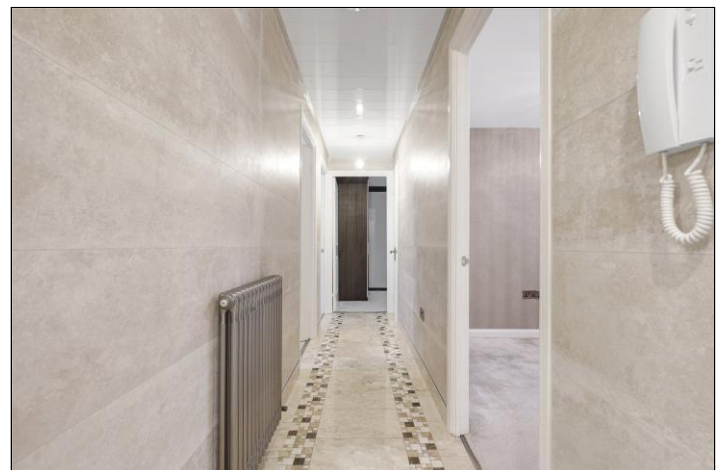
Ground Rent: £55 PA

AGENTS REF: - DP/LS/NUN260109/05022026

Council Tax Band: D **Tenure:** Leasehold - Present owner has a share in the freehold.

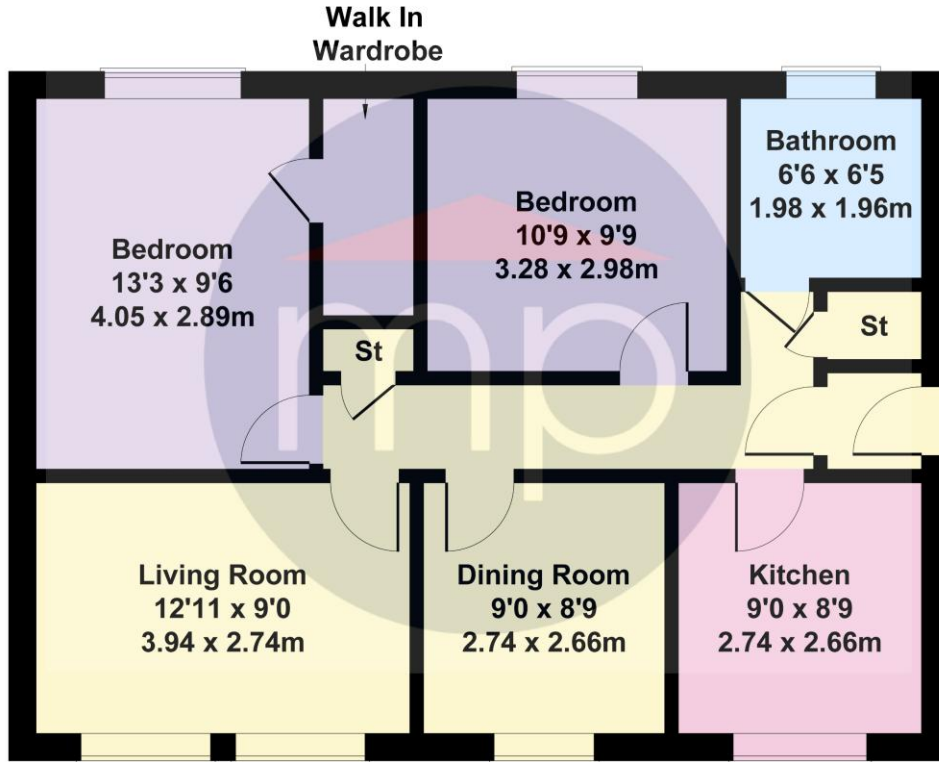
TO VIEW: Contact our Nunthorpe office on

Tel: **01642 955625**



The Wickets

Approximate Gross Internal Area
721 sq ft - 67 sq m



Not to Scale. Produced by The Plan Portal 2026
For Illustrative Purposes Only.

The information provided about this property does not constitute or form part of an offer or contract, nor may it be regarded as representations. All interested parties must verify accuracy and your solicitor must verify tenure and lease information, fixtures and fittings and, where the property has been recently constructed, extended or converted, that planning/building regulation consents are in place. All dimensions are approximate and quoted for guidance only, as are floor plans which are not to scale, and their accuracy cannot be confirmed. Reference to appliances and/or services does not imply that they are necessarily in working order or fit for the purpose. We offer our clients an optional conveyancing service, through panel conveyancing firms, via MWU and we receive on average a referral fee of one hundred and thirty pounds, only on completion of the sale. If you do use this service, the referral fee is included within the amount that you will be quoted by our suppliers. All quotes will also provide details of referral fees payable.



TO VIEW: Contact our Nunthorpe Office on Tel: **01642 955625**
95 Guisborough Road, Nunthorpe, TS7 0J5