

HORSE CHESTNUT CLOSE, MIDDLESBROUGH, TS8 9GH



- ▲ A Modern Three Bedroom Semi Detached House
- ▲ Built by Persimmon Homes on This Popular Modern Development Off Ladgate Lane
- ▲ Move In Condition
- ▲ Modern Fitted Kitchen Diner with French Doors to the Enclosed Rear Garden
- ▲ Off Road Parking for Two Cars
- ▲ Spacious Living Room
- ▲ Ground Floor WC
- ▲ Three Bedrooms, Master with Modern Shower Room
- ▲ Separate Modern Family Bathroom
- ▲ Early Viewing Advised

£165,000

www.michaelpoole.co.uk

Michael Poole
sales | lettings | auctions



A modern three bedroom semi-detached house built by Persimmon Homes on this popular modern development off Ladgate lane. Features include a modern fitted kitchen diner with French doors to the rear garden, separate living room, ground floor WC and master bedroom with modern en-suite shower room. Please call our Nunthorpe Office to arrange your viewing appointment today.

KITCHEN DINER - 4.67m x 2.7m (15'4" x 8'10")

With a modern range of fitted wall and floor units, complementing work surfaces, electric oven and gas hob, plumbing for washing machine and dishwasher, space for fridge and freezer and French doors to the rear garden.

GROUND FLOOR

ENTRANCE HALL

With staircase to the first floor.

GROUND FLOOR WC - 1.68m x 0.9m (5'6" x 2'11")

With low level WC and wash hand basin.

LIVING ROOM - 4.34m x 3.63m (14'3" x 11'11")

With under stairs cupboard.

FIRST FLOOR

BEDROOM ONE - 3.66m x 2.9m (12' x 9'6")

With built-in wardrobe.

EN-SUITE SHOWER ROOM - 1.93m x 1.63m (6'4" x 5'4")

With a modern suite comprising shower cubicle, low level WC, wash hand basin and part tiled walls.

BEDROOM TWO - 2.8m x 2.3m (9'2" x 7'7")

TO VIEW: Tel: 01642 955625

95 Guisborough Road, Nunthorpe, TS7 0JS

www.michaelpoole.co.uk



HORSE CHESTNUT CLOSE, TS8 9GH

BEDROOM THREE - 2.3m x 1.78m (7'7" x 5'10")

BATHROOM - 1.85m x 1.8m (6'1" x 5'11")

With modern white suite comprising bath, low level WC, wash hand basin and part tiled walls.

EXTERNALLY

PARKING

Externally there are two parking spaces to the front elevation.

GARDEN

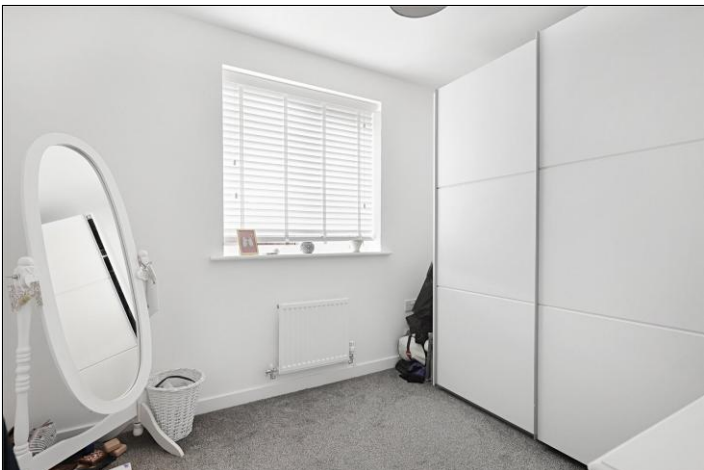
To the rear there is an enclosed garden with extended patio area and lawn.

AGENTS REF: - DP/LS/NUN250740/17122025

Council Tax Band: C **Tenure:** Freehold

TO VIEW: Contact our Nunthorpe office on

Tel: **01642 955625**

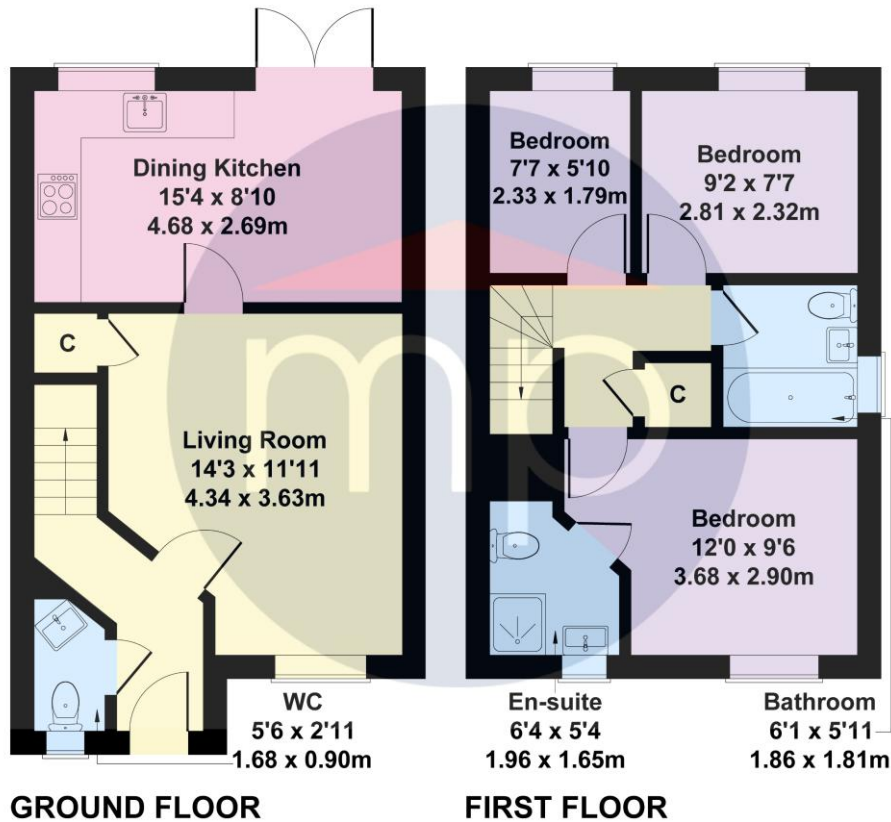


HORSE CHESTNUT CLOSE, TS8 9GH



Burdon Avenue

Approximate Gross Internal Area
743 sq ft - 69 sq m



Not to Scale. Produced by The Plan Portal 2025
For Illustrative Purposes Only.

The information provided about this property does not constitute or form part of an offer or contract, nor may it be regarded as representations. All interested parties must verify accuracy and your solicitor must verify tenure and lease information, fixtures and fittings and, where the property has been recently constructed, extended or converted, that planning/building regulation consents are in place. All dimensions are approximate and quoted for guidance only, as are floor plans which are not to scale, and their accuracy cannot be confirmed. Reference to appliances and/or services does not imply that they are necessarily in working order or fit for the purpose. We offer our clients an optional conveyancing service, through panel conveyancing firms, via MWU and we receive on average a referral fee of one hundred and thirty pounds, only on completion of the sale. If you do use this service, the referral fee is included within the amount that you will be quoted by our suppliers. All quotes will also provide details of referral fees payable.



TO VIEW: Contact our Nunthorpe Office on Tel: **01642 955625**
95 Guisborough Road, Nunthorpe, TS7 0J5