

CARLILE HILL, HEMLINGTON, MIDDLESBROUGH, TS8 9SL



- ▲ A Well Presented Three Bedroom Semi Detached House
- ▲ Easy Access to the A174, A19 & A66
- ▲ Open Plan Kitchen Diner
- ▲ Generous Well Presented Rear Garden

- ▲ Two Parking Spaces to the Front Elevation
- ▲ Modern Family Bathroom
- ▲ Early Viewing Advised

£140,000

www.michaelpoole.co.uk

Michael Poole
sales | lettings | auctions



A well-presented three bedroom semi-detached house located in this popular area of Hemlington offering easy access to the A174, A19 and A66. The property occupies a lovely plot with a generous well maintained rear garden and two parking spaces to the front. Internal features include an open plan kitchen diner and a modern family bathroom. Please call our Nunthorpe office to arrange your viewing today.

GROUND FLOOR

ENTRANCE HALL

With staircase to the first floor.

LIVING ROOM - 4.67m x 3.5m (15'4" x 11'6")

Feature fire surround with inset fire.

KITCHEN DINER - 4.3m x 2.95m (14'1" x 9'8")

With a range of fitted wall and floor units, complementing work surfaces, electric oven and electric hob with extractor over, plumbing for washing machine, integrated fridge and freezer, integrated dishwasher, tiled splashbacks, under stairs cupboard and side external door.

FIRST FLOOR

BEDROOM ONE - 2.51m x 3.2m (8'3" x 10'6")

With built-in wardrobes.

BEDROOM TWO - 3.76m x 3.68m (12'4" x 12'1")

BEDROOM THREE - 2.03m x 2.06m (6'8" x 6'9")

BATHROOM - 2.06m x 1.68m (6'9" x 5'6")

Modern white suite comprising bath with shower over and screen, low level WC, wash hand basin and fully tiled walls and floor.

EXTERNALLY

PARKING

Externally there are two parking spaces to the front elevation.

REAR GARDEN

Generous well maintained rear garden with lawn, patio and well stocked borders.

TO VIEW: Tel: 01642 955625

95 Guisborough Road, Nunthorpe, TS7 0JS

www.michaelpoole.co.uk



CARLILE HILL, TS8 9SL

AGENTS REF: - DP/LS/NUN250319/26062025

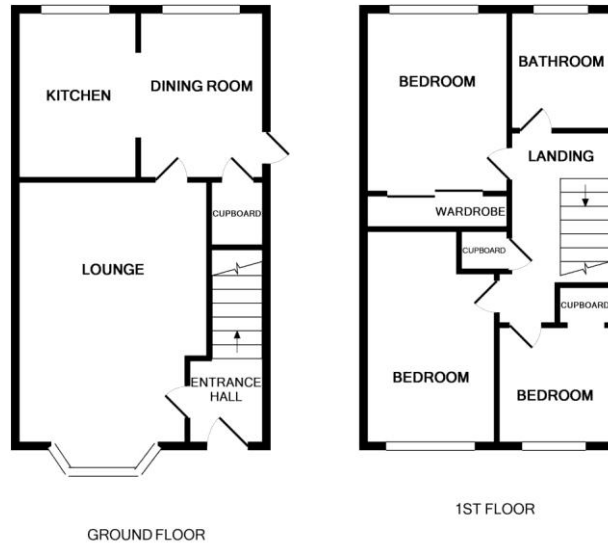
Council Tax Band: B **Tenure:** Freehold

TO VIEW: Contact our Nunthorpe office on
Tel: **01642 955625**



CARLILE HILL, TS8 9SL





Whilst every attempt has been made to ensure the accuracy of the floor plan contained here, measurements of doors, windows, rooms and any other items are approximate and no responsibility is taken for any error, omission, or mis-statement. This plan is for illustrative purposes only and should be used as such by any prospective purchaser. The services, systems and appliances shown have not been tested and no guarantee as to their operability or efficiency can be given.
Made with Metropix ©2019

The information provided about this property does not constitute or form part of an offer or contract, nor may it be regarded as representations. All interested parties must verify accuracy and your solicitor must verify tenure and lease information, fixtures and fittings and, where the property has been recently constructed, extended or converted, that planning/building regulation consents are in place. All dimensions are approximate and quoted for guidance only, as are floor plans which are not to scale, and their accuracy cannot be confirmed. Reference to appliances and/or services does not imply that they are necessarily in working order or fit for the purpose. We offer our clients an optional conveyancing service, through panel conveyancing firms, via MWU and we receive on average a referral fee of one hundred and thirty pounds, only on completion of the sale. If you do use this service, the referral fee is included within the amount that you will be quoted by our suppliers. All quotes will also provide details of referral fees payable.



TO VIEW: Contact our Nunthorpe Office on Tel: **01642 955625**
95 Guisborough Road, Nunthorpe, TS7 0JS