

RAMBLERS WAY, HEMLINGTON, MIDDLESBROUGH, TS8 9GD

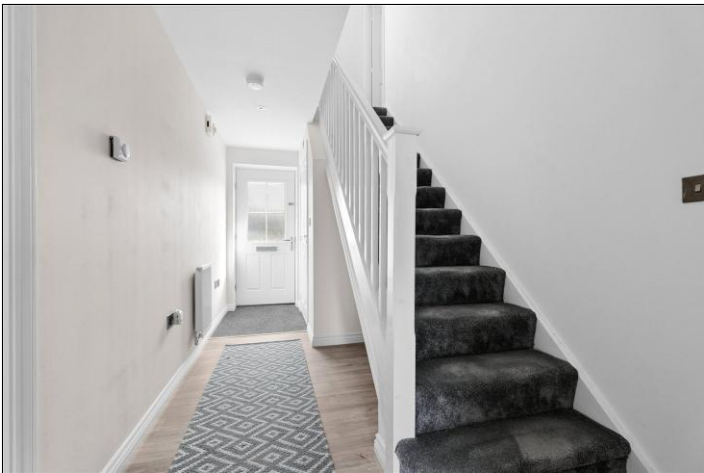


- ▲ No Chain
- ▲ A Beautifully Presented Four Bedroom Detached Home
- ▲ 26ft Open Plan Kitchen Diner with a Stunning Range of Fitted Units, Granite Work Surfaces & Integrated Appliances
- ▲ Separate Living Room
- ▲ Ground Floor WC
- ▲ Four Generous Size Bedroom, Master with Modern En-Suite Shower Room
- ▲ Modern Family Bathroom
- ▲ Double Width Driveway & Single Garage
- ▲ Private Landscaped Rear Garden
- ▲ Move In Condition
- ▲ We Are Anticipating a Large Amount of Interest in This Property
- ▲ Please Call Our Nunthorpe Office to Arrange Your Viewing Appointment Today

Offers Over £275,000

www.michaelpoole.co.uk

Michael Poole
sales | lettings | auctions



Offered for sale with no chain, a beautifully presented four bedroom detached home built by Taylor Wimpey in the sought after area of Hemlington. In move in condition and featuring a 26ft plus open plan kitchen diner with integrated appliances and granite work surfaces, separate living room, four generous size bedrooms, master with en-suite shower room and fitted wardrobes, modern family bathroom, enclosed landscaped rear garden, double width driveway and single garage. We are anticipating a large amount of interest in this property so please call our Nunthorpe Office to arrange your viewing appointment today.

GROUND FLOOR

ENTRANCE HALL

With storage cupboard.

CLOAKROOM/WC

With low level WC, wash hand basin and chrome heated towel rail.

LOUNGE - 4.8m x 3.2m (15'9" x 10'6")

With bay window to the front elevation.

KITCHEN DINER - 7.9m x 2.97m (25'11" x 9'9")

With a modern range of white fronted wall and floor units, granite work surfaces and integrated appliances include fridge and freezer, dishwasher, washing machine, oven and grill and gas hob with extractor over. Spot lighting, LED plinth lighting and French doors open to the rear garden.

FIRST FLOOR

BEDROOM ONE - 4.3m x 3.02m (14'1" x 9'11")

With built-in wardrobes.

EN-SUITE SHOWER ROOM

Modern suite comprising low level WC, floating wash hand basin, shower cubicle, part tiled walls and chrome heated towel rail.

BEDROOM TWO - 3.53m x 3.02m (11'7" x 9'11")

BEDROOM THREE - 3.53m x 3.28m (11'7" x 10'9")

BEDROOM FOUR - 2.62m x 2.51m (8'7" x 8'3")

TO VIEW: Tel: 01642 955625

95 Guisborough Road, Nunthorpe, TS7 0JS

www.michaelpoole.co.uk



RAMBLERS WAY, TS8 9GD

BATHROOM

Modern white suite comprising bath, floating wash hand basin, low level WC, part tiled walls, chrome heated towel rail and storage cupboard.

EXTERNALLY

PARKING, GARAGE & GARDEN

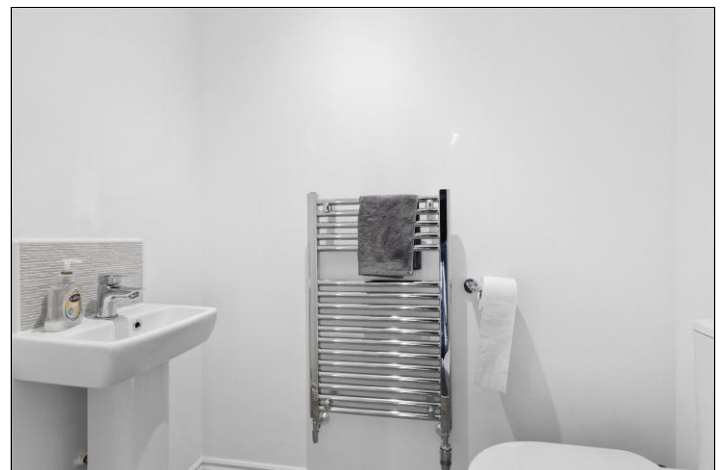
Externally there is a double width driveway to the front leading to the single garage. To the rear there is a lovely, landscaped garden with porcelain patio, lawn and planted borders.

AGENTS REF: - DP/LS/NUN250183/20042026

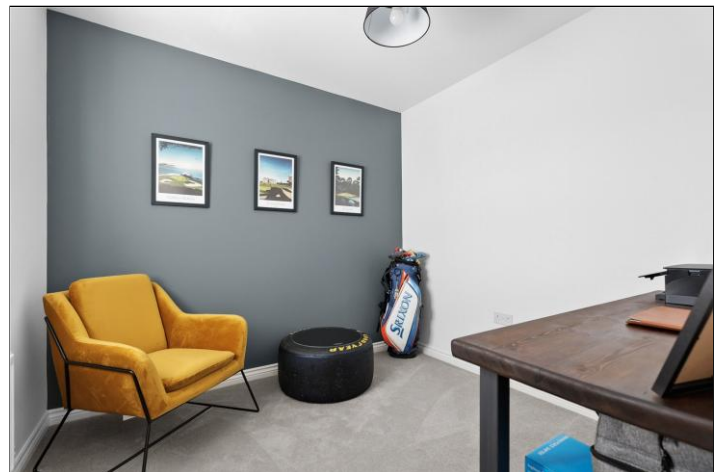
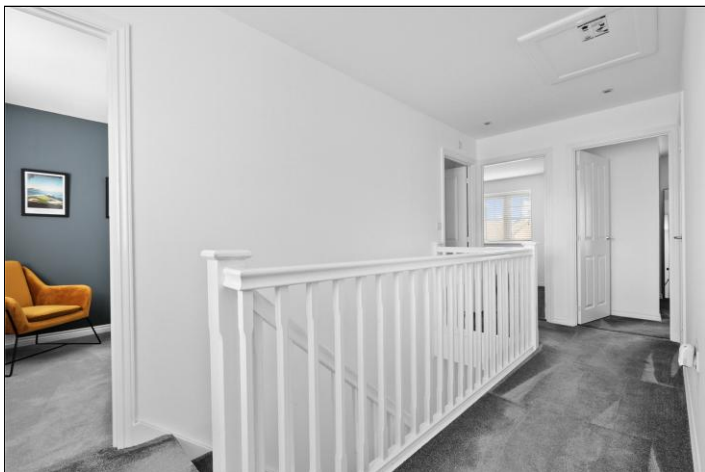
Council Tax Band: D **Tenure:** To be advised

TO VIEW: Contact our Nunthorpe office on

Tel: 01642 955625



RAMBLERS WAY, TS8 9GD

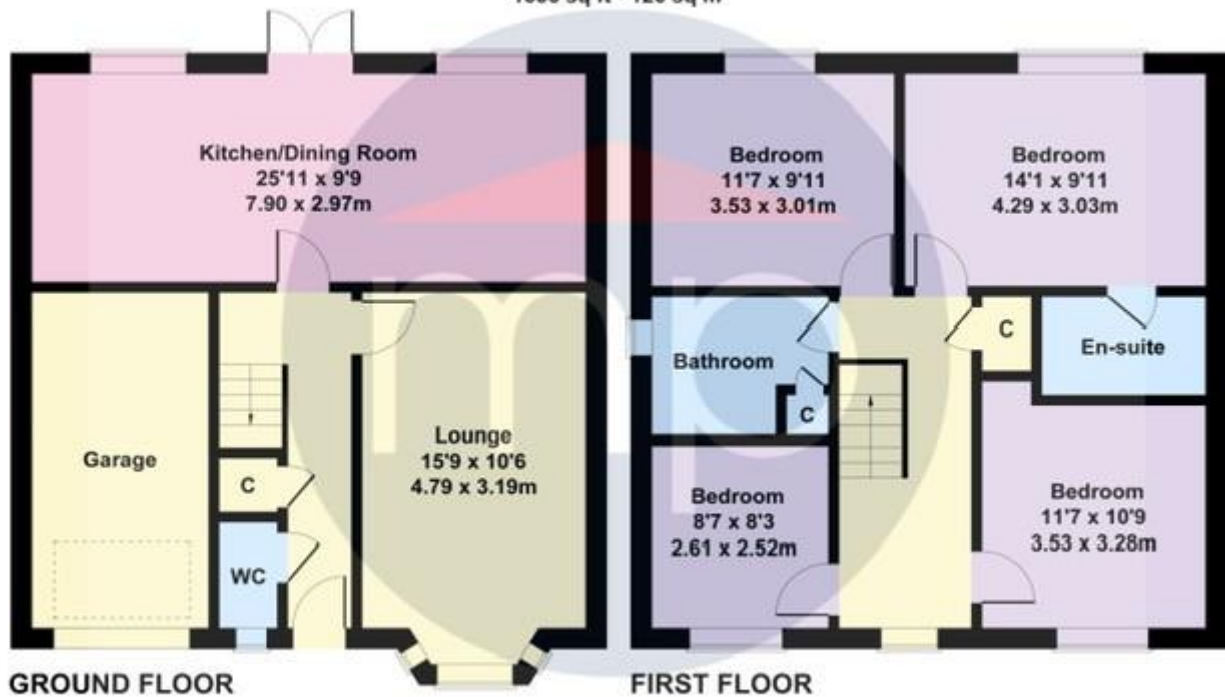


RAMBLERS WAY, TS8 9GD



Ramblers way

Approximate Gross Internal Area
1356 sq ft - 126 sq m



Not to Scale. Produced by The Plan Portal 2026
For Illustrative Purposes Only.

The information provided about this property does not constitute or form part of an offer or contract, nor may it be regarded as representations. All interested parties must verify accuracy and your solicitor must verify tenure and lease information, fixtures and fittings and, where the property has been recently constructed, extended or converted, that planning/building regulation consents are in place. All dimensions are approximate and quoted for guidance only, as are floor plans which are not to scale, and their accuracy cannot be confirmed. Reference to appliances and/or services does not imply that they are necessarily in working order or fit for the purpose. We offer our clients an optional conveyancing service, through panel conveyancing firms, via MWU and we receive on average a referral fee of one hundred and thirty pounds, only on completion of the sale. If you do use this service, the referral fee is included within the amount that you will be quoted by our suppliers. All quotes will also provide details of referral fees payable.



TO VIEW: Contact our Nunthorpe Office on Tel: **01642 955625**
95 Guisborough Road, Nunthorpe, TS7 0JS