

# TRECASTELL, INGLEBY BARWICK, STOCKTON-ON-TEES, TS17 5HA



- ▲ A three bedroom mid terrace house with garage, sensibly priced for an early sale
- ▲ Of interest to a variety of prospective buyers and available for sale with NO ONWARD CHAIN
- ▲ Lawned front garden, low maintenance rear garden, driveway and single garage
- ▲ Gas central heating system and double glazing
- ▲ Spacious lounge/dining room with access door to the rear garden
- ▲ Kitchen with a range of fitted units and built in oven and hob
- ▲ Three generous bedrooms with the master bedroom having fitted wardrobes
- ▲ En-suite shower room to the master bedroom and bathroom with white three piece suite
- ▲ Pleasant cul-de-sac setting off Penderyn Crescent

**£165,000**

[www.michaelpoole.co.uk](http://www.michaelpoole.co.uk)

**Michael Poole**  
sales | lettings | auctions



Of interest to a variety of prospective buyers and available for sale with NO ONWARD CHAIN, a three bedroom mid terrace house with garage, lawned front garden, low maintenance rear garden, driveway and single garage. Sensibly priced for an early sale.

**GROUND FLOOR**

**HALLWAY**

**LOUNGE/DINING ROOM - 6.54m x 3.54m (21'5" x 11'7")**

**KITCHEN - 2.96m x 2.79m (9'9" x 9'2")**

**FIRST FLOOR**

**LANDING**

**BEDROOM ONE - 3.46m (11'4") reducing to 2.79m (9'2") x 3.40m (11'2")**

**EN-SUITE SHOWER ROOM - 1.72m x 1.50m (5'8" x 4'11")**

**BEDROOM TWO - 3.46m x 3.22m (11'4" x 10'7")**

**BEDROOM THREE - 3.00m x 2.25m (9'10" x 7'5")**

**BATHROOM - 2.38m x 1.86m (7'10" x 6'1")**

**TO VIEW:** Tel: **01642 763636**  
Myton Park, Myton Road, Ingleby Barwick, TS17 0WA

[www.michaelpoole.co.uk](http://www.michaelpoole.co.uk)



TRECASTELL, TS17 5HA



**EXTERNALLY**

**GARDENS, PARKING & GARAGE**

Lawned front garden with bin store. A driveway leads to the single garage with roller door, internal courtesy door, power points and lighting. The rear garden has been adapted for easy maintenance with an astro turf lawn, gravelled section and decking.

**AGENTS REF:** - DC/LS/ING260256/18052026

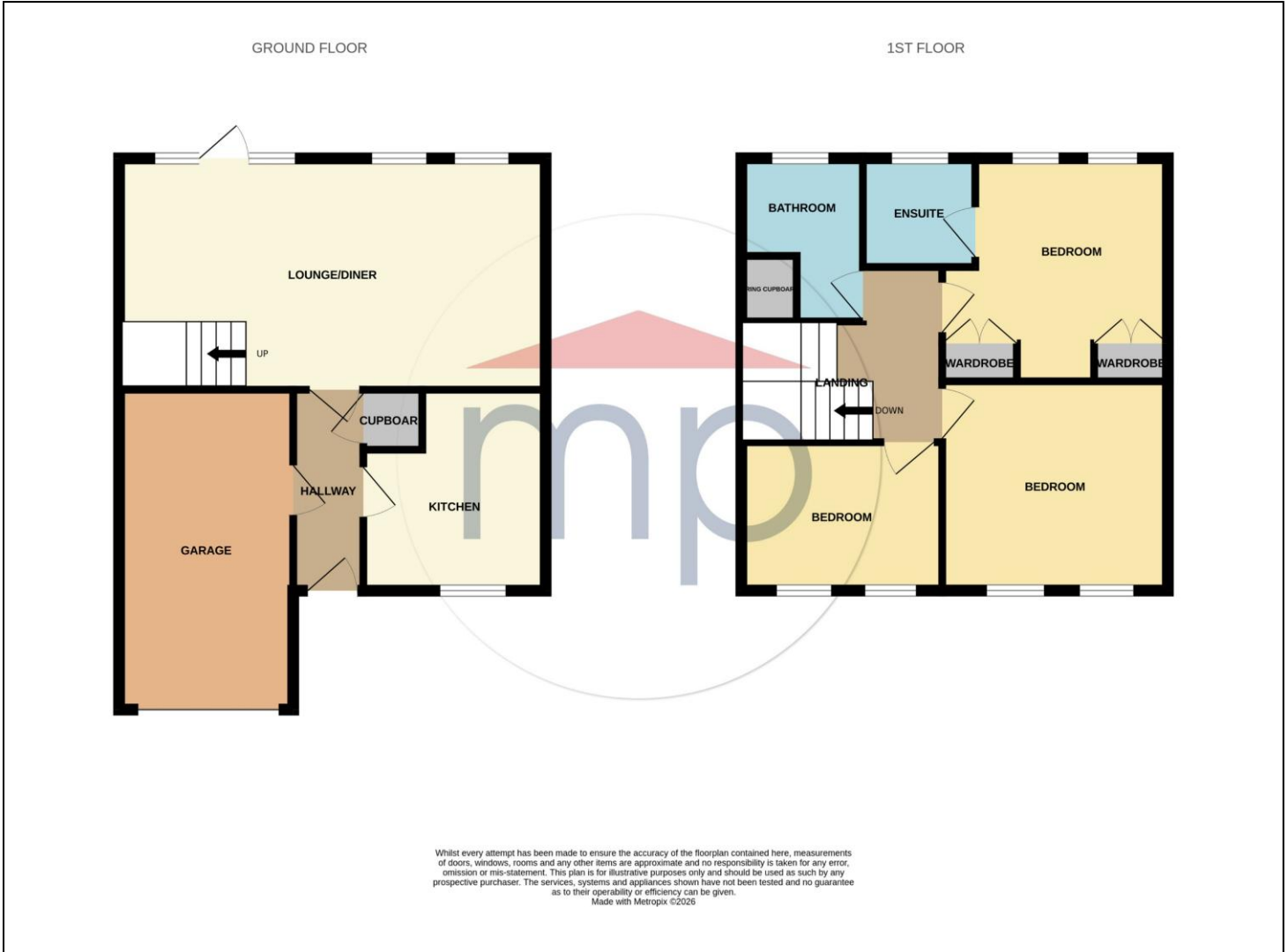
**Council Tax Band:** C      **Tenure:** Freehold

**TO VIEW:** Contact our Ingleby Barwick office on  
Tel: **01642 763636**

A photograph of the storefront of a Michael Poole property consultants office at night. The building has large glass windows and a prominent blue neon sign that reads 'Michael Poole property consultants'. Inside the office, several property listings are visible on the walls.

**Do you have a property you need to sell before you can buy?**

Michael Poole offers **FREE, no obligation** market appraisals and gives you guidance on the **BEST PRICE** you can expect in the current market



The information provided about this property does not constitute or form part of an offer or contract, nor may it be regarded as representations. All interested parties must verify accuracy and your solicitor must verify tenure and lease information, fixtures and fittings and, where the property has been recently constructed, extended or converted, that planning/building regulation consents are in place. All dimensions are approximate and quoted for guidance only, as are floor plans which are not to scale, and their accuracy cannot be confirmed. Reference to appliances and/or services does not imply that they are necessarily in working order or fit for the purpose. We offer our clients an optional conveyancing service, through panel conveyancing firms, via MWU and we receive on average a referral fee of one hundred and thirty pounds, only on completion of the sale. If you do use this service, the referral fee is included within the amount that you will be quoted by our suppliers. All quotes will also provide details of referral fees payable.



**TO VIEW:** Contact our Ingleby Barwick Office on Tel: **01642 763636**  
 Myton Park, Myton Road, Ingleby Barwick, TS17 0WA

[www.michaelpoole.co.uk](http://www.michaelpoole.co.uk)

**Michael Poole**  
 sales | lettings | auctions