

MAIDEN WAY, INGLEBY BARWICK, STOCKTON-ON-TEES, TS17 5FR



- ▲ A beautifully presented and extremely stylish four bedroom detached family home
- ▲ Nicely positioned within 'The Rings' area of Ingleby Barwick which offers excellent access to local amenities
- ▲ Surprisingly generous rear garden with double width driveway and single garage
- ▲ Spacious Lounge with attractive decor and having a feature electric stove with mantel over
- ▲ Kitchen/Diner with built in oven and hob, integrated fridge and freezer and double glazed French doors to the rear garden

- ▲ Utility Room and Cloakroom/WC
- ▲ Four delightful bedrooms with the Master having built in wardrobes and an impressive En-Suite Shower Room
- ▲ Luxuriously redesigned Family Bathroom with white suite including a roll top bath and attractive tiling
- ▲ Gas central heating system via a combination boiler and double glazing

£270,000

www.michaelpoole.co.uk

Michael Poole
sales | lettings | auctions



A beautifully presented and extremely stylish four bedroom detached family home nicely positioned within 'The Rings' area of Ingleby Barwick with a surprisingly generous rear garden, double width driveway and single garage.

GROUND FLOOR

ENTRANCE HALL

LOUNGE - 4.83m x 3.32m (15'10" x 10'11")

KITCHEN/DINER - 5.58m x 3.10m (18'4" x 10'2")

UTILITY ROOM - 2.12m x 1.61m (6'11" x 5'3")

CLOAKROOM/WC - 1.61m x 0.88m (5'3" x 2'11")

FIRST FLOOR

LANDING

BEDROOM ONE - 4.04m (13'3") reducing to 3.15m (10'4") x 3.33m (10'11")
Fitted wardrobes.

EN-SUITE SHOWER ROOM - 2.14m x 1.87m (7' x 6'2")

BEDROOM TWO - 3.73m x 2.84m (12'3" x 9'4")

BEDROOM THREE - 2.93m x 2.84m (9'7" x 9'4")

BEDROOM FOUR - 2.91m x 2.20m (9'7" x 7'3")

BATHROOM

TO VIEW: Tel: 01642 763636

Myton Park, Myton Road, Ingleby Barwick, TS17 0WA

www.michaelpoole.co.uk



MAIDEN WAY, TS17 5FR

EXTERNALLY

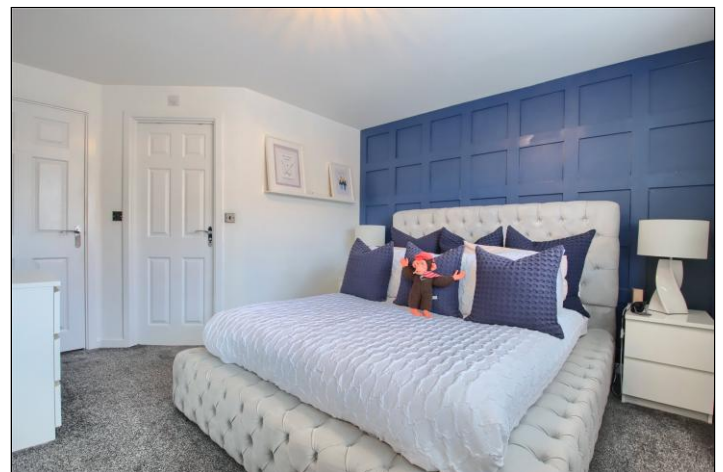
GARDENS & GARAGE

Lawned front garden with a double width driveway leading to the single garage with power points and lighting. The surprisingly generous rear garden is enclosed and mainly laid to lawn with a decked seating area, paved patio area and timber shed.

AGENTS REF: - DC/LS/ING260142/27032026

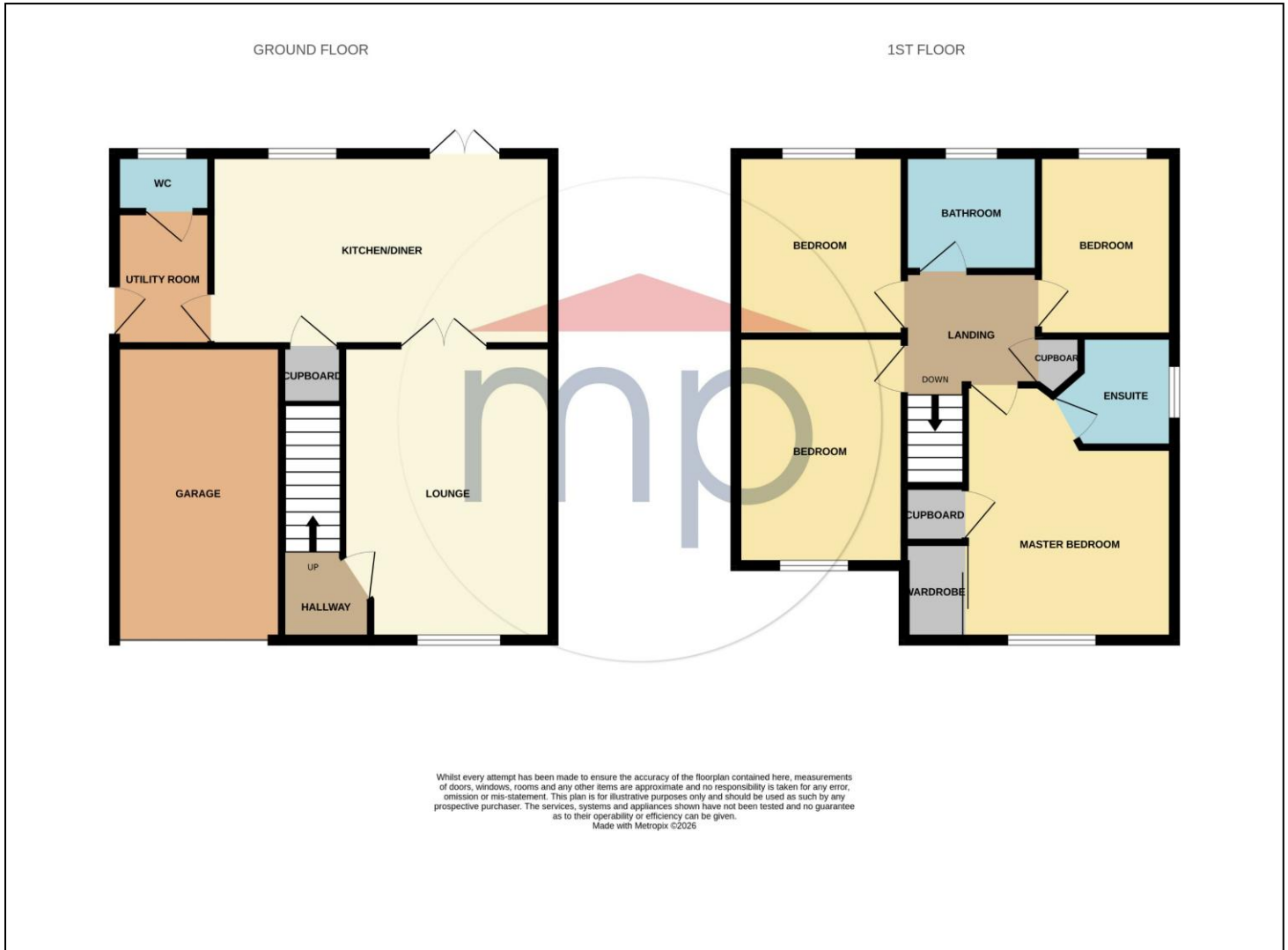
Council Tax Band: D **Tenure:** Freehold

TO VIEW: Contact our Ingleby Barwick office on
Tel: **01642 763636**



MAIDEN WAY, TS17 5FR





The information provided about this property does not constitute or form part of an offer or contract, nor may it be regarded as representations. All interested parties must verify accuracy and your solicitor must verify tenure and lease information, fixtures and fittings and, where the property has been recently constructed, extended or converted, that planning/building regulation consents are in place. All dimensions are approximate and quoted for guidance only, as are floor plans which are not to scale, and their accuracy cannot be confirmed. Reference to appliances and/or services does not imply that they are necessarily in working order or fit for the purpose. We offer our clients an optional conveyancing service, through panel conveyancing firms, via MWU and we receive on average a referral fee of one hundred and thirty pounds, only on completion of the sale. If you do use this service, the referral fee is included within the amount that you will be quoted by our suppliers. All quotes will also provide details of referral fees payable.



TO VIEW: Contact our Ingleby Barwick Office on Tel: **01642 763636**
Myton Park, Myton Road, Ingleby Barwick, TS17 0WA

www.michaelpoole.co.uk

Michael Poole
sales | lettings | auctions