

ACORN COURT, REDCAR, TS10 2TP



- ▲ Extended Detached Property
- ▲ Three/Four Bedrooms
- ▲ Three Bathrooms
- ▲ Fantastic Mickledales Location

- ▲ Ground Floor Bedroom with Wet Room
- ▲ Summerhouse
- ▲ Garage
- ▲ Landscaped Garden

£280,000

www.michaelpoole.co.uk

Michael Poole
sales | lettings | auctions



Located on the highly popular and sought after Mickledales development, this extended detached family home ticks plenty of boxes. Sitting on an enviable corner plot spanning a 10th of an acre and extended to create a ground floor bedroom with wet room. Early viewing is advised to fully appreciate this excellent property.

GROUND FLOOR

ENTRANCE PORCH - 1.45m x 0.70m (4'9" x 2'4")

Modern style part glazed composite entrance door, tiled flooring and further composite door to the hall.

HALL - 1.75m x 1.23m (5'9" x 4')

With Herringbone LVT flooring, radiator, staircase to the first floor and doors to the kitchen diner and living room.

LIVING ROOM - 3.02m x 5.86m (9'11" x 19'3")

A spacious room with Herringbone LVT flooring, radiators, UPVC window and double doors to the ground floor bedroom.

KITCHEN DINER - 3.22m (10'7") reducing to 2.55m (8'4") x 5.86m (19'3")

A matt grey fitted kitchen with stainless steel handles and roll edge worktops, integrated electric oven and gas hob with extractor hood, part metro tiled walls, UPVC window overlooks the rear garden, breakfast bar area, radiator, and doors to the utility and WC.

UTILITY - 1.59m x 1.56m (5'3" x 5'11'10")

Tiled flooring flows through from the kitchen, plumbing for washing machine, radiator, extractor fan and door to the WC.

WC - 1.62m x 0.90m (5'4" x 2'11")

A white suite with tiled splashback, tiled flooring, radiator and extractor fan.

GROUND FLOOR BEDROOM - 3.00m x 3.63m (9'10" x 11'11")

A generous extended space currently used a ground floor bedroom with LVT style flooring, radiator, UPVC window and fully glazed door to the low maintenance rear garden. Sliding door to ...

TO VIEW: Tel: 01642 285041

30-32 Station Road, Redcar, TS10 1AG

www.michaelpoole.co.uk



ACORN COURT, TS10 2TP

WET ROOM - 1.70m x 3.61m (5'7" x 11'10")

A spacious wet room with thermostatic shower, extractor fan, non-slip vinyl flooring, radiator and UPVC window.

FIRST FLOOR

LANDING - 3.00m x 1.52m (9'10" x 5')

With panelled doors to all rooms and a storage cupboard houses the Main combi boiler.

BEDROOM ONE - 3.33m (10'11") reducing to 1.01m (3'4") x 3.44m (11'3") reducing to 2.82m (9'3")

With neutral decoration and feature wall, grey carpet, integrated wardrobe storage, radiator, UPVC window and door to the en-suite.

EN-SUITE - 2.16m x 1.37m (7'1" x 4'6")

An upgraded en-suite with a low profile walk-in thermostatic shower with rinser attachment, high gloss vanity storage unit, graphite radiator, fully tiled walls and flooring, downlighters, extractor fan and UPVC window.

BEDROOM TWO - 3.13m (10'3") reducing to 2.80m (9'2") x 3.51m (11'6") reducing to 1.50m (4'11")

A light and bright double room with oak vinyl flooring, integrated wardrobe storage, radiator and UPVC window.

BEDROOM THREE - 3.52m (11'7") reducing to 2.12m (6'11") x 2.27m (7'5") reducing to 0.65m (2'2")

A spacious third bedroom with neutral decoration including carpet, radiator and UPVC window overlooks the rear garden.

BATHROOM - 2.83m (9'3") reducing to 2.16m (7'1") x 1.48m (4'10")

A white suite with shower rinser attachment, extractor fan, part tiled walls with decorative inserts, grey oak vinyl flooring, chrome towel radiator and UPVC window.

EXTERNALLY

GARAGE - With up and over entrance door.

PARKING & GARDEN - The front of the property benefits from a generous frontage offering parking for numerous vehicles, raised border planting and double gated access to the rear garden. The wraparound rear garden is low maintenance with an artificial laid lawn, neat resin pathways and seating areas, covered hot tub area and double gated access to the driveway.

SUMMERHOUSE - 4.47m x 2.60m (14'8" x 8'6")

A fully decorated space with oak vinyl flooring, power and lighting, UPVC windows and French doors.

Mains Utilities

Gas Central Heating

Mains Sewerage

No Known Flooding Risk

No Known Legal Obligations

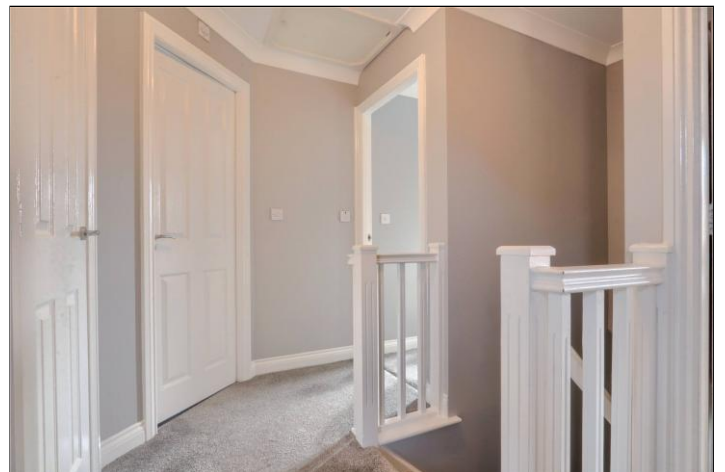
Standard Broadband & Mobile Signal

No Known Rights of Way

Council Tax Band: C **Tenure:** Freehold

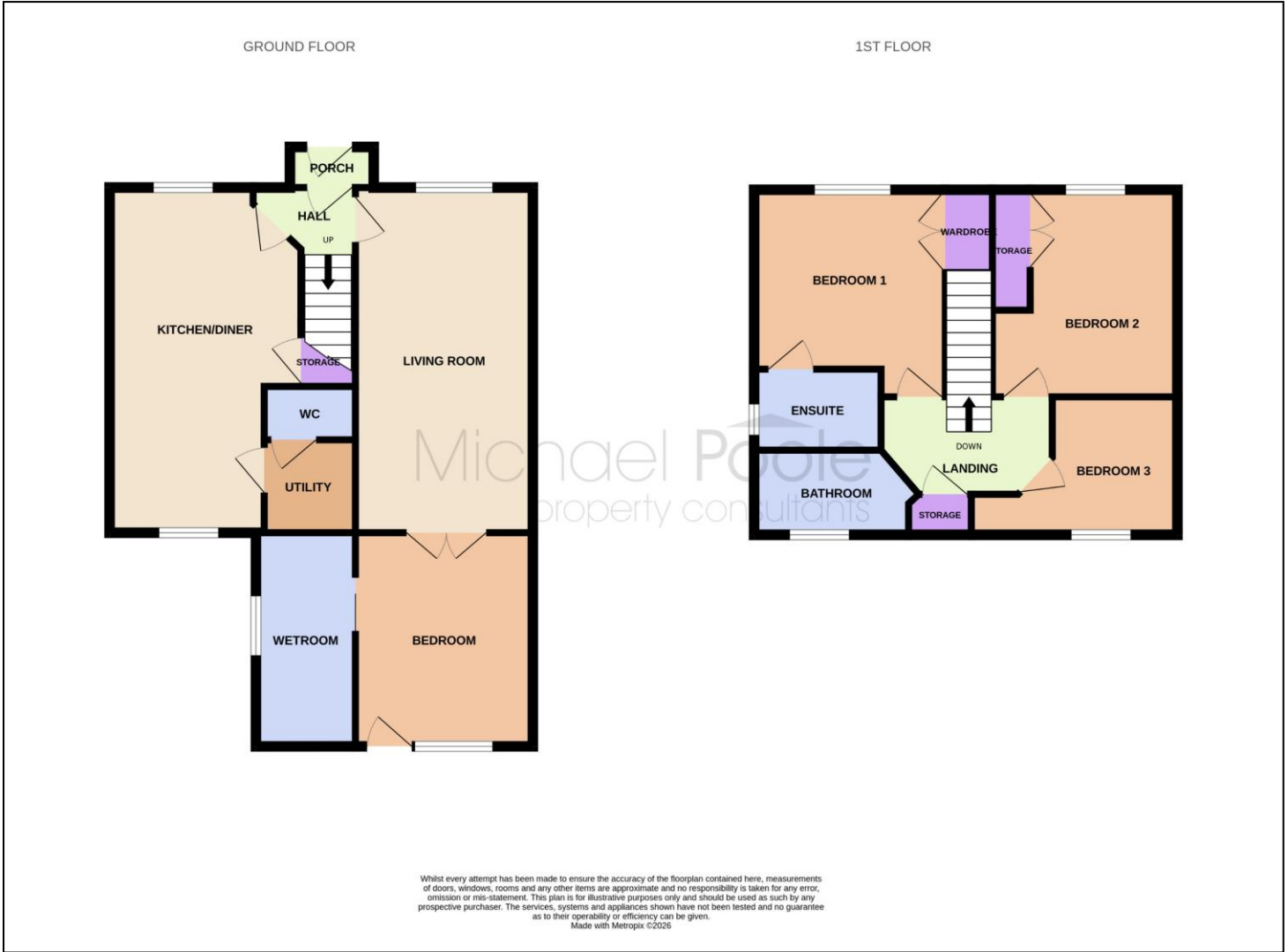


ACORN COURT, TS10 2TP



ACORN COURT, TS10 2TP





The information provided about this property does not constitute or form part of an offer or contract, nor may it be regarded as representations. All interested parties must verify accuracy and your solicitor must verify tenure and lease information, fixtures and fittings and, where the property has been recently constructed, extended or converted, that planning/building regulation consents are in place. All dimensions are approximate and quoted for guidance only, as are floor plans which are not to scale, and their accuracy cannot be confirmed. Reference to appliances and/or services does not imply that they are necessarily in working order or fit for the purpose. We offer our clients an optional conveyancing service, through panel conveyancing firms, via MWU and we receive on average a referral fee of one hundred and thirty pounds, only on completion of the sale. If you do use this service, the referral fee is included within the amount that you will be quoted by our suppliers. All quotes will also provide details of referral fees payable.



TO VIEW: Contact our Redcar Office on Tel: **01642 285041**
 30-32 Station Road, Redcar, TS10 1AG

www.michaelpoole.co.uk

Michael Poole

sales | lettings | auctions