

## REID TERRACE, GUISBOROUGH, TS14 6EB



- ▲ Four-bedroom end-of-terrace home
- ▲ Popular Reid Terrace location in Guisborough
- ▲ Large ground-floor extension
- ▲ Additional ground-floor bedroom (bedroom four)
- ▲ Stylish contemporary family bathroom
- ▲ Generous rear outdoor space with patio area
- ▲ Driveway providing off-street parking (rare for terraced homes)
- ▲ Ideal for families or multi-generational living
- ▲ Close to local amenities, schools and transport links

**£175,000**

[www.michaelpoole.co.uk](http://www.michaelpoole.co.uk)

**Michael Poole**  
sales | lettings | auctions



Situated on the ever-popular Reid Terrace in Guisborough, this beautifully presented four-bedroom end-of-terrace home offers spacious and versatile accommodation, ideal for growing families or those seeking flexible living space.

Extended to the ground floor, the property benefits from a generous addition that creates a superb fourth bedroom and a convenient downstairs shower room — perfect for guests, multi-generational living, or home working. The home is well presented throughout, with a layout designed for both comfort and practicality.

Upstairs, there are three well-proportioned bedrooms, all offering excellent space and natural light, along with a stylish, modern family bathroom finished to a high standard.

Externally, the property truly stands out. It boasts generous outdoor space with a private patio area ideal for entertaining, along with a driveway providing valuable off-street parking — a rare and highly sought-after feature for a terraced property in this location.

A fantastic opportunity to acquire a spacious, extended home in a desirable residential area close to local amenities, schools, and transport links. Early viewing is highly recommended.

**GROUND FLOOR**

**HALLWAY - 3.73m x 0.86m (12'3" x 2'10")**

**BEDROOM - 3.68m x 3.05m (12'1" x 10')**

**BATHROOM - 3.02m x 0.94m (9'11" x 3'1")**

**KITCHEN - 1.96m x 4.14m (6'5" x 13'7")**

**DINING ROOM - 4.27m x 2.74m (14' x 9')**

**LIVING ROOM - 4.27m x 5.54m (14' x 18'2")**

**TO VIEW:** Tel: **01287 552280**  
10 Chaloner Street, Guisborough, TS14 6QD

[www.michaelpoole.co.uk](http://www.michaelpoole.co.uk)



# REID TERRACE, TS14 6EB

## FIRST FLOOR

**LANDING - 1.88m x 3.73m (6'2" x 12'3")**

**BEDROOM ONE - 4.42m x 2.74m (14'6" x 9')**

**BEDROOM TWO - 2.44m x 2.74m (8' x 9')**

**BEDROOM THREE - 2.44m x 2.74m (8' x 9')**

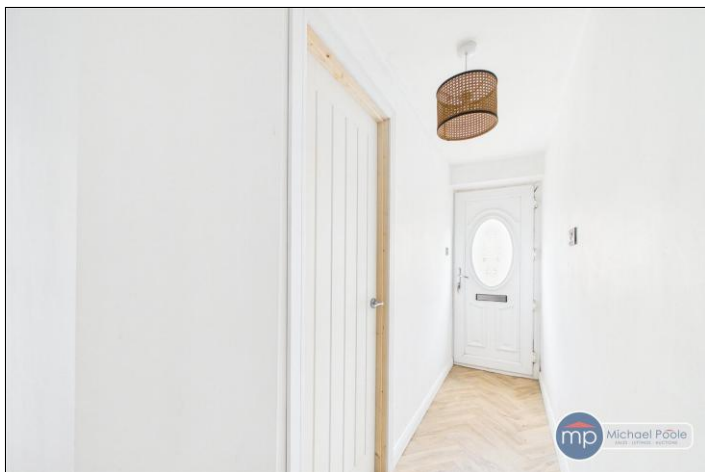
**BATHROOM - 1.85m x 3.18m (6'1" x 10'5")**

Mains Utilities  
Gas Central Heating  
Mains Sewerage  
No Known Flooding Risk  
No Known Legal Obligations  
Standard Broadband & Mobile Signal  
No Known Rights of Way

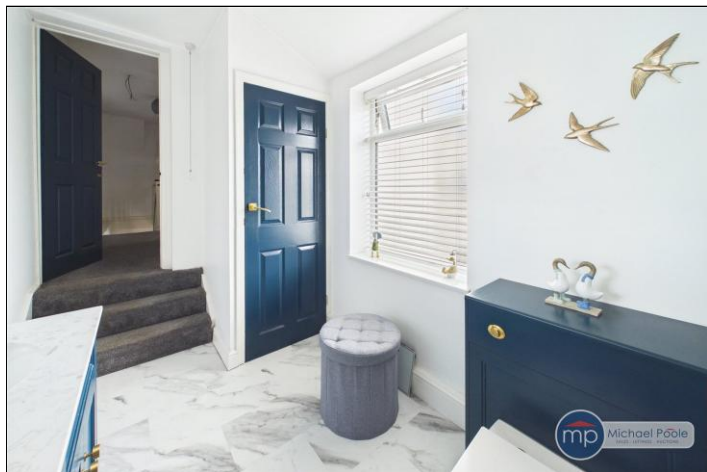
**AGENTS REF:** - JS/LS/GBH260043/25022026

**Council Tax Band:** B      **Tenure:** Freehold

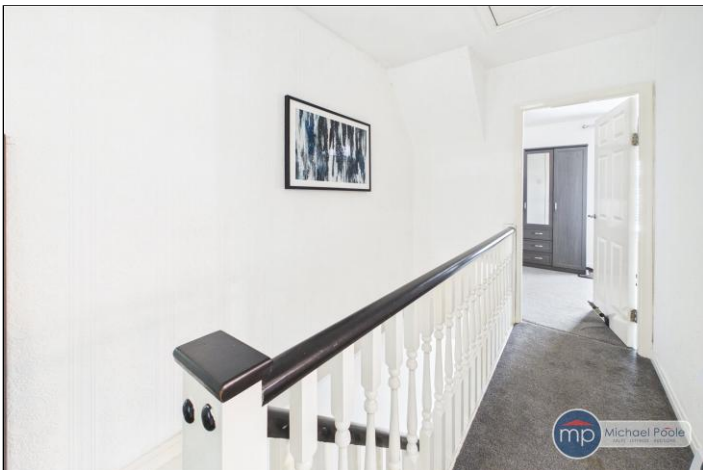
**TO VIEW:** Contact our Guisborough office on  
Tel: **01287 552280**



REID TERRACE, TS14 6EB

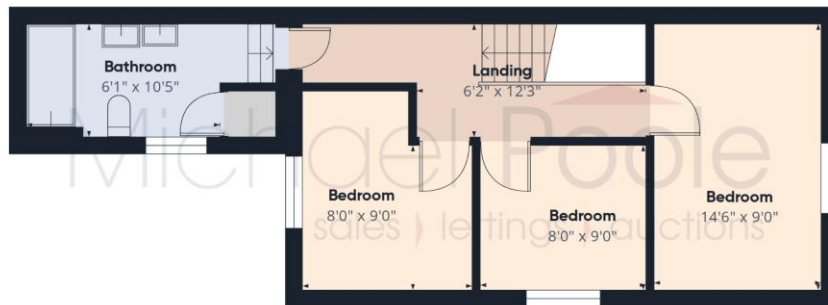


REID TERRACE, TS14 6EB





Floor 0



Floor 1



The information provided about this property does not constitute or form part of an offer or contract, nor may it be regarded as representations. All interested parties must verify accuracy and your solicitor must verify tenure and lease information, fixtures and fittings and, where the property has been recently constructed, extended or converted, that planning/building regulation consents are in place. All dimensions are approximate and quoted for guidance only, as are floor plans which are not to scale, and their accuracy cannot be confirmed. Reference to appliances and/or services does not imply that they are necessarily in working order or fit for the purpose. We offer our clients an optional conveyancing service, through panel conveyancing firms, via MWU and we receive on average a referral fee of one hundred and thirty pounds, only on completion of the sale. If you do use this service, the referral fee is included within the amount that you will be quoted by our suppliers. All quotes will also provide details of referral fees payable.



**TO VIEW:** Contact our Guisborough Office on Tel: **01287 552280**  
10 Chaloner Street, Guisborough, TS14 6QD