

## LORTON ROAD, REDCAR, TS10 4LY



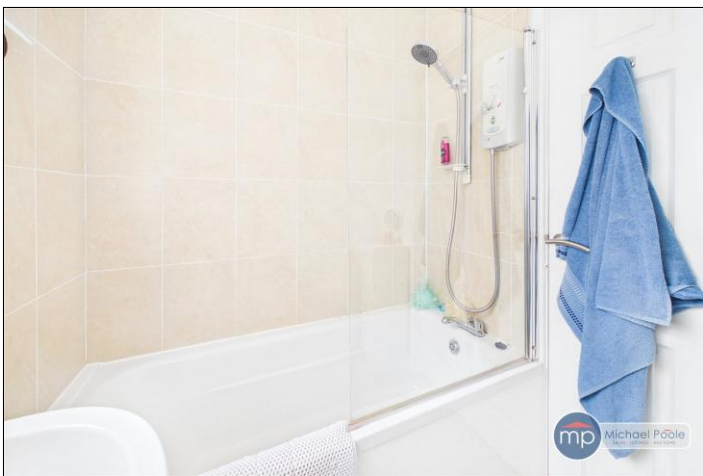
- ▲ Semi Detached Dormer Bungalow
- ▲ Three Bedrooms
- ▲ Fantastic Residential Location
- ▲ Generous Proportions Throughout

- ▲ 28ft Lounge Diner
- ▲ Gardens
- ▲ 23ft Garage
- ▲ No Chain Sale

**Offers Over £189,950**

[www.michaelpoole.co.uk](http://www.michaelpoole.co.uk)

**Michael Poole**  
sales | lettings | auctions



Offered for sale with no chain, this semi-detached dormer bungalow sits on a lovely plot in a highly sought after residential area of Redcar and is brilliant for local amenities and transport links. Early viewing is advised to fully appreciate this spacious property.

#### **GROUND FLOOR**

##### **HALL - 1.83m x 1.96m (6' x 6'5")**

A light and bright entrance hall with part glazed UPVC door and twin side lights, neutral decoration, radiator, staircase to the first floor and doors to the bathroom and lounge diner.

##### **LOUNGE DINER - 3.66m (12') reducing to 3.2m (10'6") x 8.74m (28'8") increasing to 9.35m (30'8") into the bow**

A spacious bow windowed room with neutral decoration including carpet, modern style wood fire surround with electric fire, radiators, and UPVC French doors open to the rear garden patio area.

##### **KITCHEN - 2.57m x 3.25m (8'5" x 10'8")**

A shaker style fitted kitchen with roll edge worktops and upstands, integrated electric oven and gas hob with extractor hood and mosaic tiled splashback, plumbing for washing machine, vinyl flooring, chrome downlighters, UPVC window and door to the driveway.

##### **BEDROOM ONE - 4.04m x 3.23m (13'3" x 10'7")**

With neutral décor including carpet, radiator and UPVC window overlooking the rear garden.

##### **BATHROOM - 1.6m x 1.93m (5'3" x 6'4")**

Traditional white suite with over bath Mira electric shower, extractor fan, part tiled walls, vinyl flooring, radiator and UPVC window.

#### **FIRST FLOOR**

##### **BEDROOM TWO - 3.66m (12') reducing to 2.4m (7'10") x 4.57m (15') reducing to 3.48m (11'5")**

A light and bright double room with integrated storage, radiator and UPVC window overlooking the rear garden.

**TO VIEW: Tel: 01642 285041**

30-32 Station Road, Redcar, TS10 1AG

[www.michaelpoole.co.uk](http://www.michaelpoole.co.uk)



## LORTON ROAD, TS10 4LY

### **BEDROOM THREE - 2.6m x 3.48m (8'6" x 11'5")**

A double room with grey carpet, radiator, and eaves storage housing the Worcester combi boiler.

### **EXTERNALLY**

#### **GARAGE - 2.51m x 7.06m (8'3" x 23'2")**

A larger than average with garage with remote roller door, power, light and handy side door access.

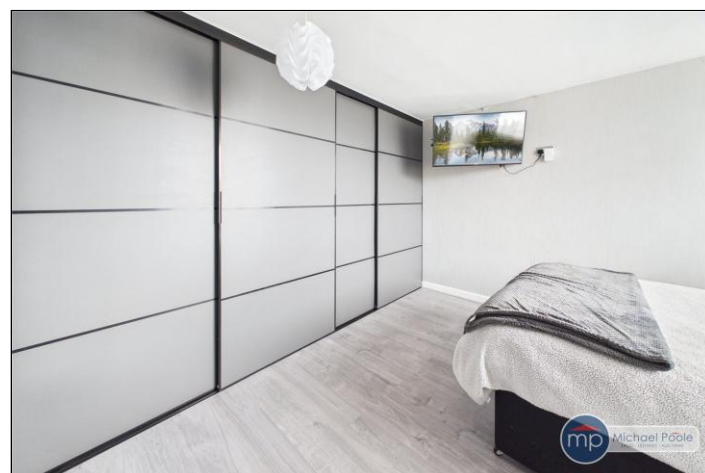
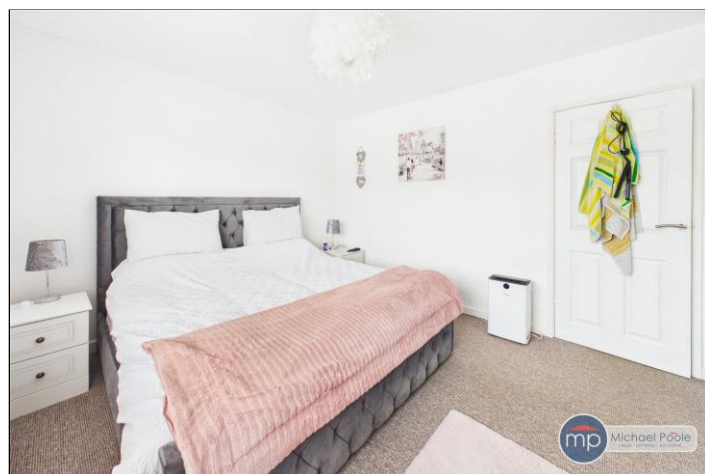
**PARKING & GARDENS** - The front of the property benefits from a gated driveway with gravelled frontage and evergreen planting, outdoor tap, and gated access to the rear garden. The rear garden is mainly laid to lawn with full width paved patio area, storage shed, greenhouse and gated access to the driveway.

**AGENTS REF:** - JS/LS/EST260196/23042026

**Council Tax Band:** C     **Tenure:** Freehold

**TO VIEW:** Contact our Redcar office on

Tel: **01642 285041**



LORTON ROAD, TS10 4LY





The information provided about this property does not constitute or form part of an offer or contract, nor may it be regarded as representations. All interested parties must verify accuracy and your solicitor must verify tenure and lease information, fixtures and fittings and, where the property has been recently constructed, extended or converted, that planning/building regulation consents are in place. All dimensions are approximate and quoted for guidance only, as are floor plans which are not to scale, and their accuracy cannot be confirmed. Reference to appliances and/or services does not imply that they are necessarily in working order or fit for the purpose. We offer our clients an optional conveyancing service, through panel conveyancing firms, via MWU and we receive on average a referral fee of one hundred and thirty pounds, only on completion of the sale. If you do use this service, the referral fee is included within the amount that you will be quoted by our suppliers. All quotes will also provide details of referral fees payable.



**TO VIEW:** Contact our Redcar Office on Tel: **01642 285041**  
 30-32 Station Road, Redcar, TS10 1AG