

HEREFORD CLOSE, LINTHORPE, MIDDLESBROUGH, TS5 6PL



- ▲ Chain Free Sale
- ▲ Perfect For First Time Buyers, Young Couples And Families Alike!
- ▲ Modern And Recently Updated Three Bedroom Semi
- ▲ Gas Central Heating With A Combi Boiler
- ▲ Large Rear Garden
- ▲ Handy Ground Floor WC
- ▲ Modern Kitchen With Stylish High Gloss Handleless Unit
- ▲ Walking Distance To Some Good Schooling And Lintorpe Village
- ▲ Three Good Sized Bedrooms
- ▲ Bathroom With A Modern White Suite

£145,000

www.michaelpoole.co.uk

Michael Poole
sales | lettings | auctions



Perfect for first time buyers, young couples and families alike! This modern and recently updated three bedroom semi is going to make a great home for another family.

Notable features include gas central heating with a combi boiler, large rear garden, modern kitchen with stylish handleless units, ground floor WC, bathroom with a modern white suite, three good sized bedrooms and walking distance to some good schooling and Linthorpe Village.

The property comprises entrance hall, lounge/dining room, kitchen and WC. On the first floor there are three bedrooms and a family bathroom. Externally there is a large rear garden.

GROUND FLOOR

HALLWAY - UPVC door, radiator and stairs leading to first floor.

LOUNGE/DINING ROOM - 5.2m x 3.7m (17'1" x 12'2")
Electric flame effect fire and two radiators

KITCHEN - 3.5m x 3.4m (11'6" x 11'2")

White high gloss handleless wall drawer and floor units, wood grain effect roll edge work top, electric oven, four ring gas hob with a stainless steel extractor, 1.5 sink unit, storage cupboard, space for a fridge freezer.

WC - Close coupled toilet.

FIRST FLOOR

LANDING - Storage cupboard.

BEDROOM 1 - 4.3m x 2.9m (14'1" x 9'6")

Fitted wardrobes with sliding doors, storage cupboard and radiator.

BEDROOM 2 - 3.6m x 3.0m (11'10" x 9'10")

Storage cupboard and radiator.

BEDROOM 3 - 3.6m x 2.1m (11'10" x 6'11")

Storage cupboard and radiator.

TO VIEW: Tel: 01642 254222
64-66 Borough Road, Middlesbrough, TS1 2JH

www.michaelpoole.co.uk



HEREFORD CLOSE, TS5 6PL

BATHROOM - 1.8m x 1.7m (5'11" x 5'7")

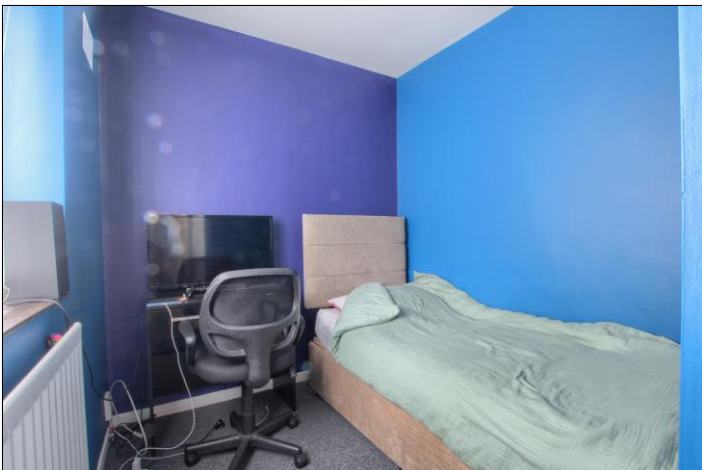
Close coupled toilet, vanity wash basin with mixer tap, bath, chrome towel radiator and cladded walls.

EXTERNALLY

GARDENS - To the front a small garden with side access to the rear. TO the rear an enclosed garden with a lawn and patio.

Council Tax Band: B **Tenure:** Freehold

TO VIEW: Contact our Middlesbrough office on
Tel: 01642 254222



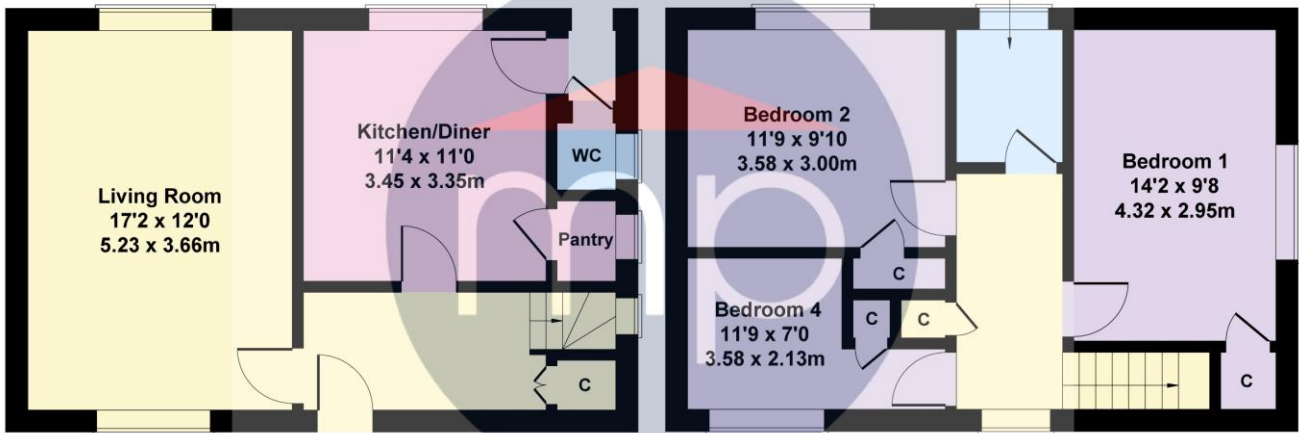
HEREFORD CLOSE, TS5 6PL



30 Hereford Close

Approximate Gross Internal Area
915 sq ft - 85 sq m

Bathroom
6'0 x 5'6
1.83 x 1.68m



GROUND FLOOR

FIRST FLOOR

Not to Scale. Produced by The Plan Portal 2025
For Illustrative Purposes Only.

The information provided about this property does not constitute or form part of an offer or contract, nor may it be regarded as representations. All interested parties must verify accuracy and your solicitor must verify tenure and lease information, fixtures and fittings and, where the property has been recently constructed, extended or converted, that planning/building regulation consents are in place. All dimensions are approximate and quoted for guidance only, as are floor plans which are not to scale, and their accuracy cannot be confirmed. Reference to appliances and/or services does not imply that they are necessarily in working order or fit for the purpose. We offer our clients an optional conveyancing service, through panel conveyancing firms, via MWU and we receive on average a referral fee of one hundred and thirty pounds, only on completion of the sale. If you do use this service, the referral fee is included within the amount that you will be quoted by our suppliers. All quotes will also provide details of referral fees payable.



TO VIEW: Contact our Middlesbrough Office on Tel: **01642 254222**
64-66 Borough Road, Middlesbrough, TS1 2JH