

Need a Mortgage in principle to make offers? Call us now for quick assistance!
0121 775 0101



Do you need to sell? Start your journey now! Call us we can help.
0121 775 0101



6 Ladbrook Road

Solihull, B91 3RN
Offers in the Region of £720,000

SCAN FOR MORE INFO

SIZE - 2,024.6 Sq Ft
TENURE - Freehold
COUNCIL TAX - Solihull Metropolitan Borough Council - E
BROADBAND - Upload Max 5500Mbps Download Max 5500Mbps
MOBILE SERVICES - EE - 85%, O2 - 81%, 3 - 85%, Vodafone - 80%
EPC - C - 74
PARKING - Double Garage & Driveway For 3 Cars
FLOODRISK - Very Low
SERVICES - Mains
COVENANTS - N/A

A beautifully presented extended semi-detached home in the heart of Solihull, offering generous accommodation across three floors, including a large kitchen/breakfast room, through lounge, versatile double garage, en-suite and a top floor bedroom with dressing area.

FEATURES

- Extended Semi-Detached Home In Solihull
- Generous Accommodation Across Three Floors
- Spacious Kitchen/Breakfast Room
- Through Lounge & Separate Snug
- Guest Cloakroom & WC To The Ground Floor
- Study/Office
- Four Bedrooms, Including Top Floor Suite
- Principal Bedroom With En-Suite
- Wet Room Serving The First Floor
- Large Driveway & Integrated Double Garage
- Private Rear Garden With Patio & Lawn

Are you an investor interested in expanding your portfolio?

Call 0121 775 0101 to provide your investment criteria for alerts.



SCAN TO VIEW OUR WEEKLY FILMS & SUBSCRIBE

Sneak Peeks

Every week, we unveil "Sneak Peeks," a feature showcasing exclusive properties before they hit Rightmove and other platforms.

The Landlord Club

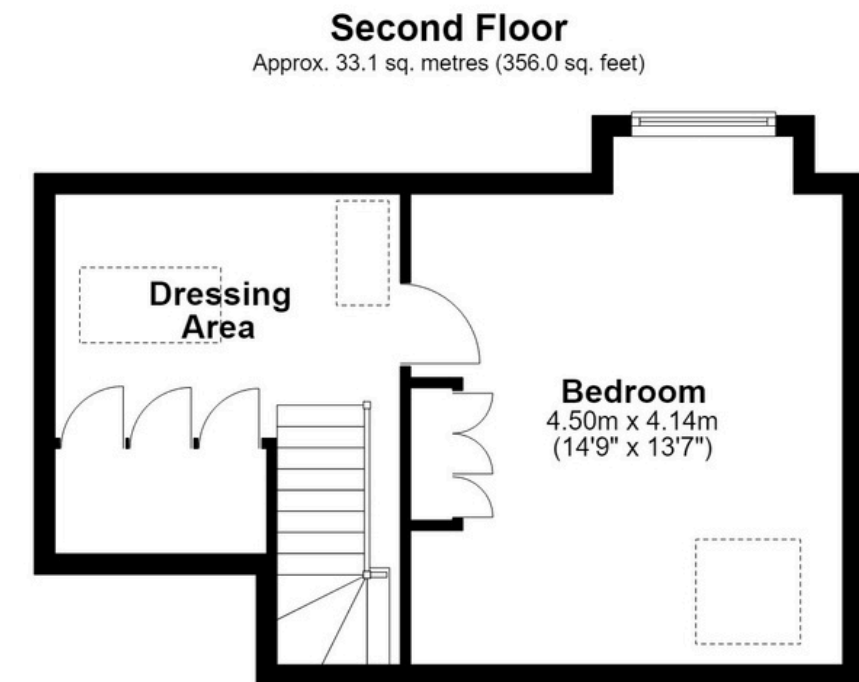
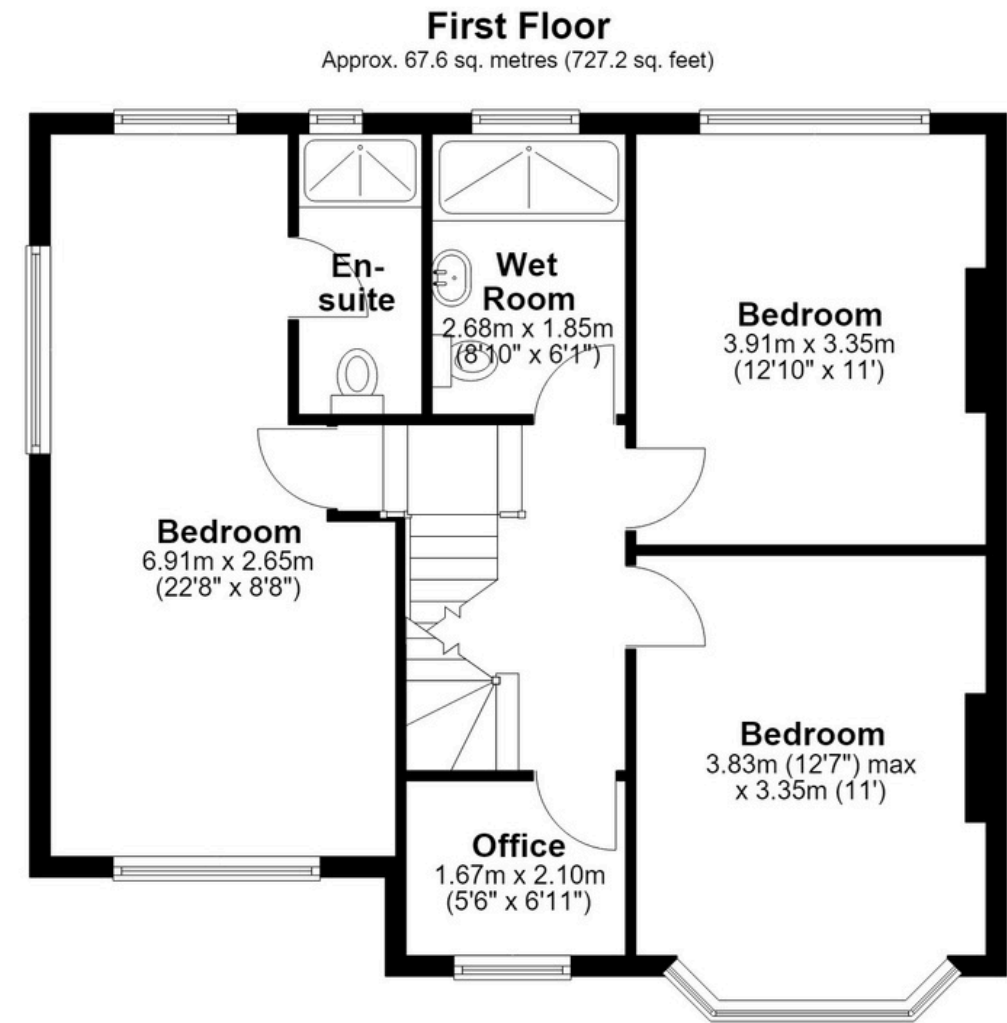
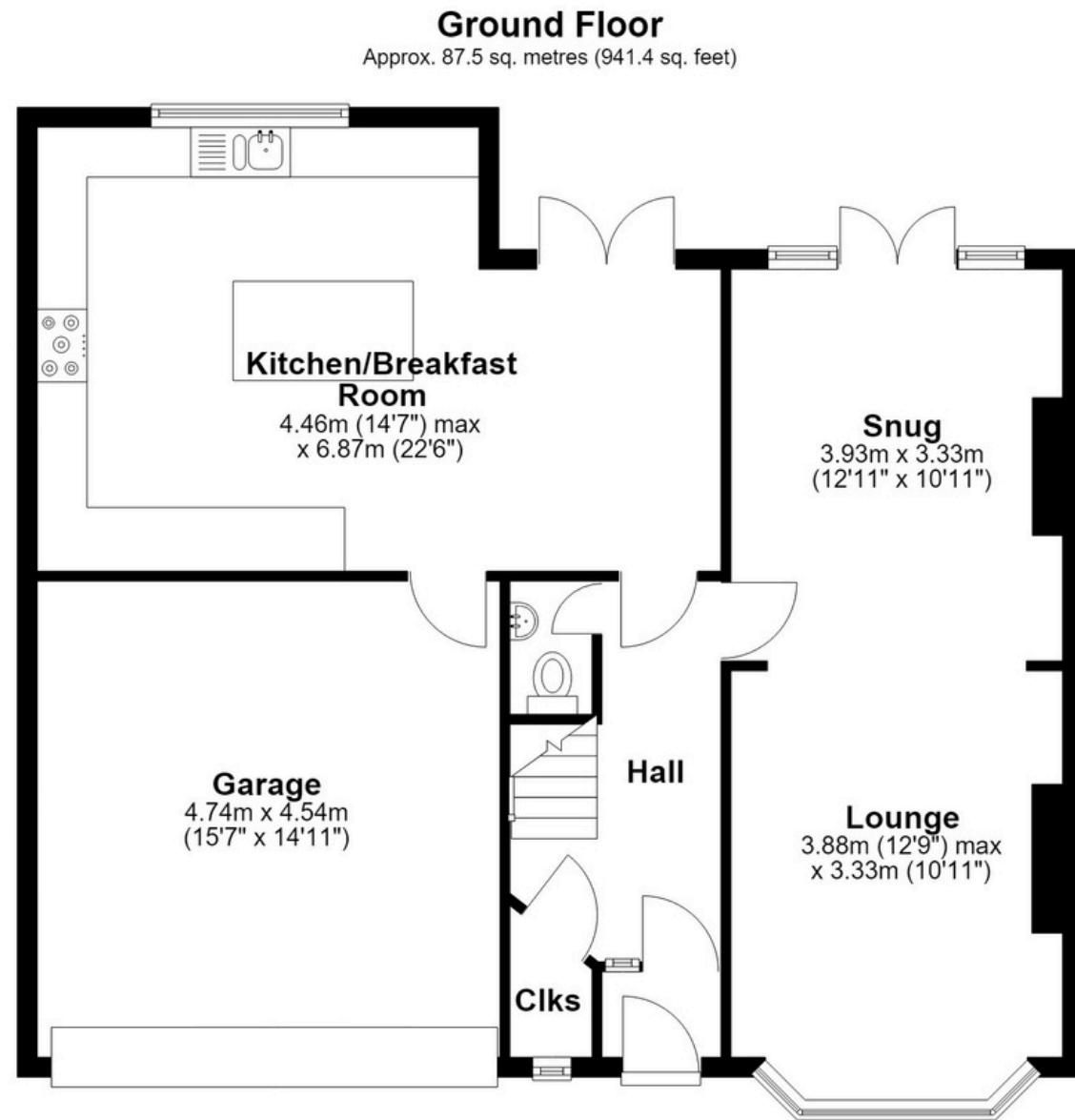
Join our Landlord Club for weekly updates on legislation, market trends, and our Letting Director's 'Investment Pick of the Week' for optimal ROI.

HTSPMD

Tune into 'How's The Solihull Property Market Dom' weekly for a quick, insightful snapshot of the market.

The Mortgage Update

Get weekly insights and the best deals with our Mortgage Update, your shortcut to navigating the complex mortgage landscape confidently.



Total area: approx. 188.1 sq. metres (2024.6 sq. feet)

This floor plan is for illustration purposes only, this is not intended to be a measured/scaled survey or comply with RICS guidelines. All measurements (including total floor area) openings, orientation and floor area are approximate. No details are guaranteed, they cannot be relied upon for any purpose and do not form part of any agreement. A party must rely upon its own inspection(s). No responsibility is taken for any error, omission, or mis-statement.
Plan produced using PlanUp.