

Need a Mortgage in principle to make offers? Call us now for quick assistance!  
0121 775 0101



Do you need to sell? Start your journey now! Call us we can help.  
01564 777 314



## Aspley Heath Lane

Tanworth-in-Arden, B94  
Offers In The Region Of £450,000

Traditional three bedroom mid terrace home in excellent condition. Set in a rural position close to Tanworth in Arden village center, with landscaped West facing garden and a gated driveway perfect for those seeking a peaceful lifestyle.

### FEATURES

- Well Presented Three Bedroom Home
- Ensuite & Family Bathroom
- Modernised Finish Throughout
- Kitchen Diner With Separate Utility room
- Spacious Lounge With Log Burner
- South Facing Garden
- Gated Driveway Parking
- Rural Village Setting
- Close To Village Centre

**SCAN FOR MORE INFO**  
**SIZE** - 912.3 Sq Ft  
**TENURE** - Freehold  
**COUNCIL TAX** - Stratford-upon-Avon Council - D  
**BROADBAND** - Upload Max 22Mbps  
 Download Max 1800Mbps  
**MOBILE** - Vodafone - 84%, O2 - 82%, EE - 80%, 3 - 74%.  
**EPC** - D  
**PARKING** - Driveway Parking For Up To 3 Cars.  
**FLOODRISK** - Very Low  
**SERVICES** - Mains  
**COVENANTS** - N/A

Are you an investor interested in expanding your portfolio?

Call 01564 777 314 to provide your investment criteria for alerts.

### Sneak Peeks

Every week, we unveil "Sneak Peeks," a feature showcasing exclusive properties before they hit Rightmove and other platforms.

### The Landlord Club

Join our Landlord Club for weekly updates on legislation, market trends, and our Letting Director's 'Investment Pick of the Week' for optimal ROI.

### HTSPMD

Tune into 'How's The Solihull Property Market Dom' weekly for a quick, insightful snapshot of the market.

### The Mortgage Update

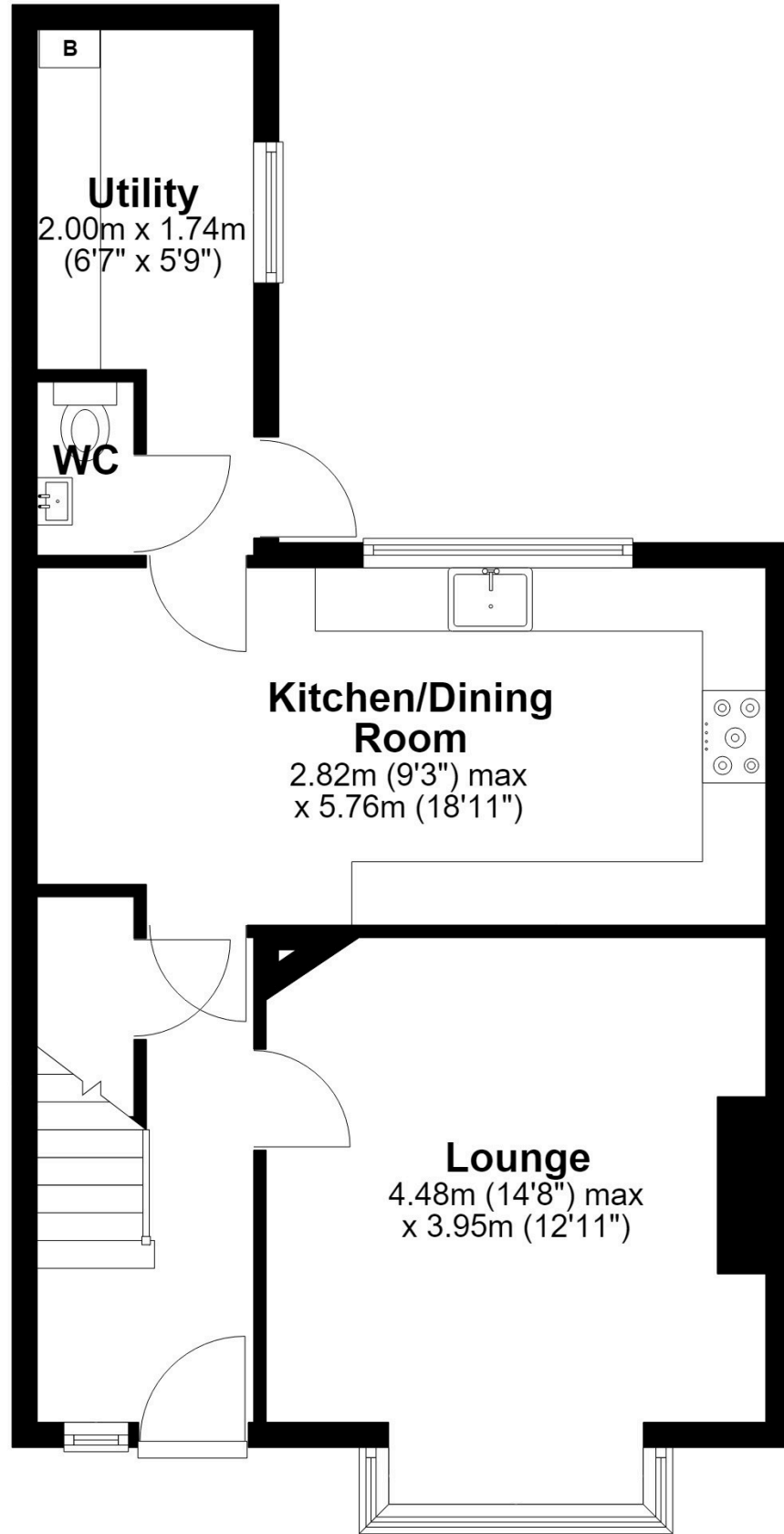
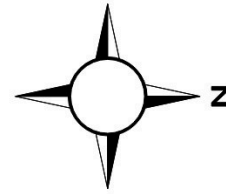
Get weekly insights and the best deals with our Mortgage Update, your shortcut to navigating the complex mortgage landscape confidently.



SCAN TO VIEW OUR WEEKLY FILMS & SUBSCRIBE

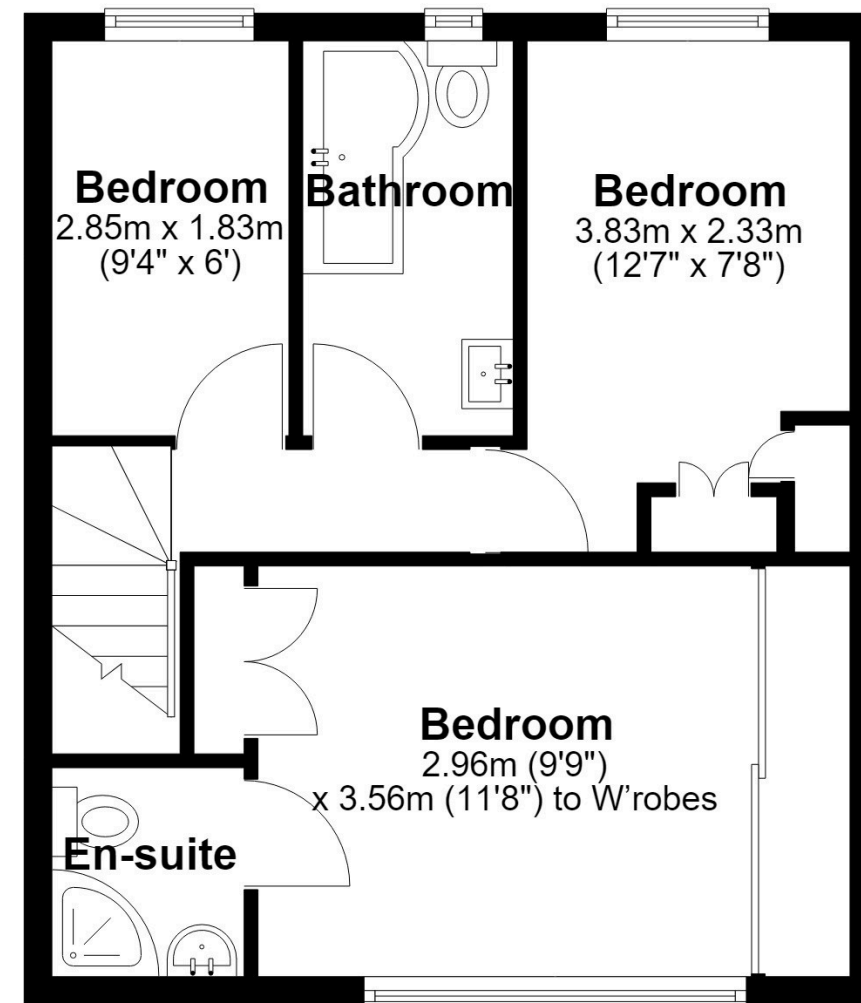
## Ground Floor

Approx. 47.2 sq. metres (507.6 sq. feet)



## First Floor

Approx. 37.6 sq. metres (404.7 sq. feet)



Total area: approx. 84.8 sq. metres (912.3 sq. feet)

This floor plan is for illustration purposes only, this is not intended to be a measured/scaled survey or comply with RICS guidelines. All measurements (including total floor area) openings, orientation and floor area are approximate. No details are guaranteed, they cannot be relied upon for any purpose and do not form part of any agreement. A party must rely upon its own inspection(s). No responsibility is taken for any error, omission, or mis-statement.

Plan produced using PlanUp.