

Need a Mortgage in principle to make offers? Call us now for quick assistance!
0121 775 0101



Do you need to sell? Start your journey now! Call us we can help.
0121 775 0101



SCAN FOR MORE INFO
SIZE - 2109 Sq Ft
TENURE - Freehold
COUNCIL TAX - Solihull Metropolitan Borough Council - F
BROADBAND - Upload Max 5500Mbps Download Max 5500Mbps
MOBILE SERVICES - EE 85%, 3 - 85%, 02 - 81%, Vodafone - 80%
EPC - TBC
PARKING - Single Garage & Driveway
FLOODRISK - Very Low
SERVICES - Mains
COVENANTS - N/A

89 Prospect Lane
 Solihull, B91 1HS
 Offers Over £800,000

Located on Prospect Lane in Solihull, this delightful four-bedroom detached house offers a perfect blend of modern living and serene outdoor space. The property is ideally situated near parkland and local shops, making it a convenient choice for families and professionals alike.

FEATURES

- Stunning Extended Detached Family Home
- Formal Dining Room
- Lounge with Lantern Skylight & Bi-Fold Doors
- Modern Breakfast Kitchen with Bi-Fold Doors
- Separate Utility Room
- Study Converted from Garage
- Two Generously Sized Double Bedrooms
- Third Large Double Bedroom & Fourth Single
- Four Piece Family Bathroom
- Beautiful Private Rear Garden

Are you an investor interested in expanding your portfolio?

Call 0121 775 0101 to provide your investment criteria for alerts.



SCAN TO VIEW OUR WEEKLY FILMS & SUBSCRIBE

Sneak Peeks

Every week, we unveil "Sneak Peeks," a feature showcasing exclusive properties before they hit Rightmove and other platforms.

The Landlord Club

Join our Landlord Club for weekly updates on legislation, market trends, and our Letting Director's 'Investment Pick of the Week' for optimal ROI.

HTSPMD

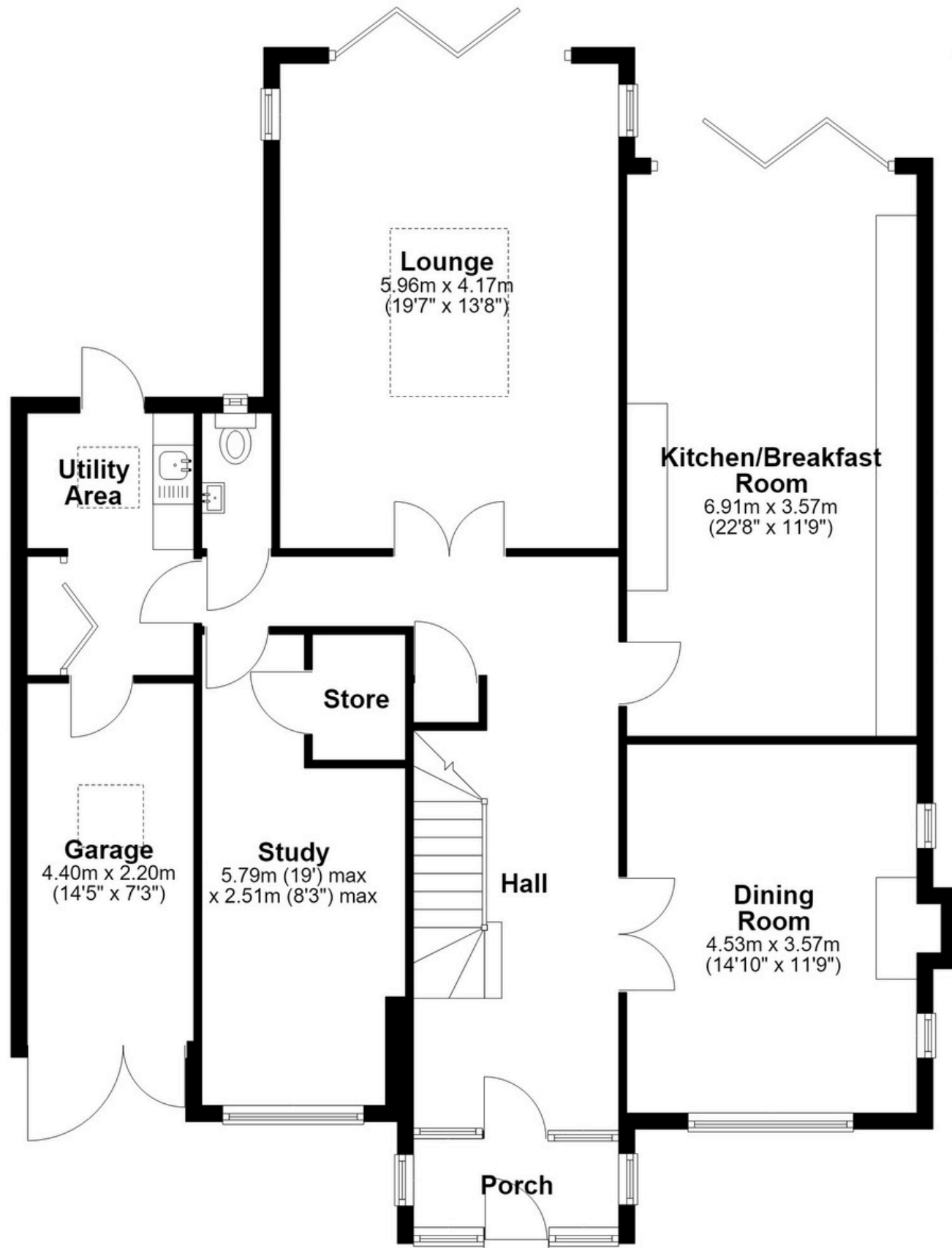
Tune into 'How's The Solihull Property Market Dom' weekly for a quick, insightful snapshot of the market.

The Mortgage Update

Get weekly insights and the best deals with our Mortgage Update, your shortcut to navigating the complex mortgage landscape confidently.

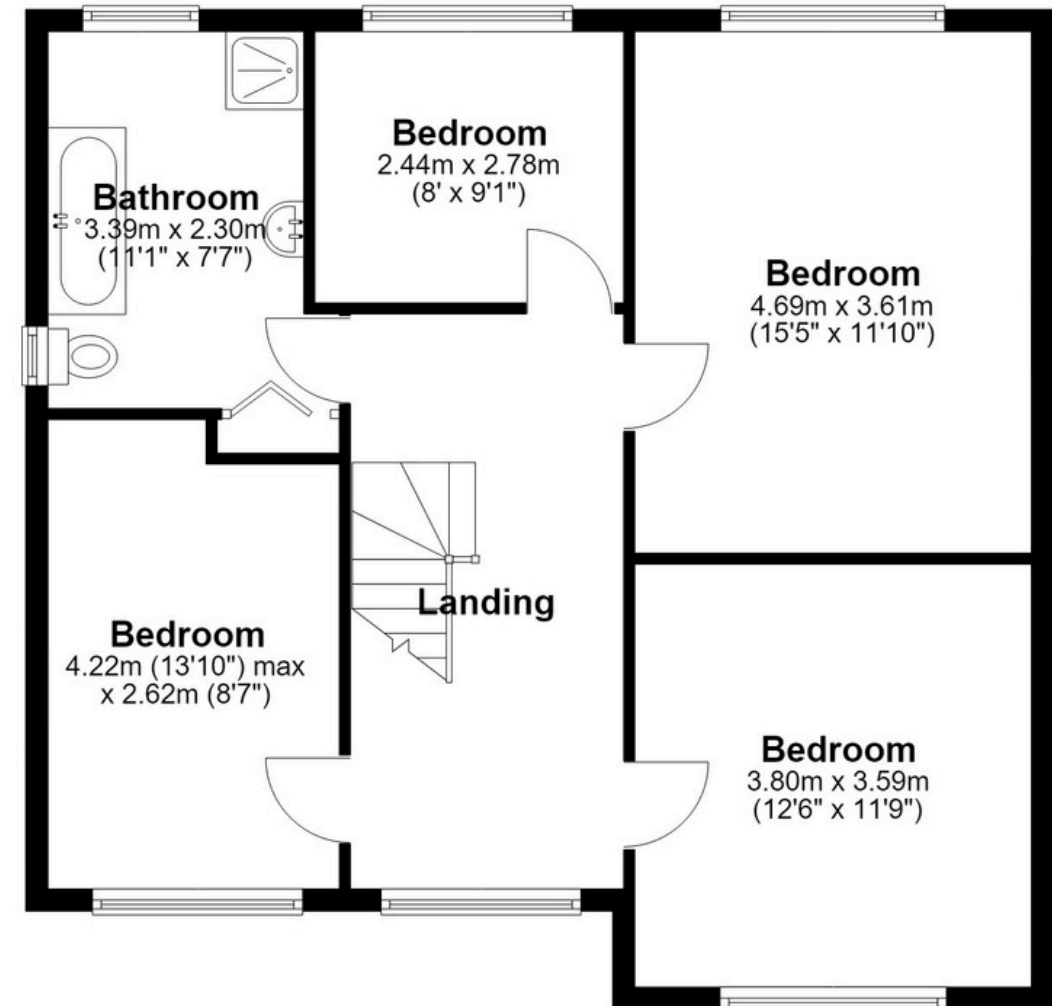
Ground Floor

Approx. 124.3 sq. metres (1338.4 sq. feet)



First Floor

Approx. 71.6 sq. metres (770.8 sq. feet)



Total area: approx. 195.9 sq. metres (2109.1 sq. feet)

This floor plan is for illustration purposes only, this is not intended to be a measured/scaled survey or comply with RICS guidelines. All measurements (including total floor area) openings, orientation and floor area are approximate. No details are guaranteed, they cannot be relied upon for any purpose and do not form part of any agreement. A party must rely upon its own inspection(s). No responsibility is taken for any error, omission, or mis-statement.

Plan produced using PlanUp.