

Need a Mortgage in principle to make offers? Call us now for quick assistance!
0121 775 0101



Do you need to sell? Start your journey now! Call us we can help.
01564 777 314



Corner Cottage

Beoley Court, Icknield Street, Beoley, B98 9AL
Guide Price £650,000

Nestled in the charming village of Beoley, this stunning character cottage offers a unique blend of traditional charm and modern comfort. Formed from two original properties and an attached barn, this beautifully presented home boasts an array of delightful features, including exposed beams and log-burning fires, all set against a backdrop of spectacular views. Offered with NO UPWARD CHAIN.

FEATURES

- Spacious Cottage Style Property with Many Original Features
- Two Large Reception Rooms Both with Log Burners
- Breakfast Kitchen with Separate Utility Room
- Principal Bedroom with Dressing room & En-Suite Bathroom
- Dual Aspect Double Bedroom Two
- Expansive Bedroom Three & Single Bedroom Four
- Family Shower Room
- Private Courtyard Garden & Shared Paddock
- Single Garage & Ample Driveway Parking for Multiple Vehicles
- Village Location with Open Countryside Views

SCAN FOR MORE INFO
SIZE - 2,272 Sq Ft
TENURE - Freehold
COUNCIL TAX - Bromsgrove Council - F
BROADBAND - Upload Max 220Mbps Download Max 1800Mbps
MOBILE - EE - 83%, Vodafone - 83%, 3 - 80%, O2 - 79%
EPC - C - 73
PARKING - Single Garage & Large Driveway
FLOODRISK - Very Low
SERVICES - Mains
COVENANTS - Yes, speak to Sales Negotiator

Are you an investor interested in expanding your portfolio?

Call 01564 777 314 to provide your investment criteria for alerts.

Sneak Peeks

Every week, we unveil "Sneak Peeks," a feature showcasing exclusive properties before they hit Rightmove and other platforms.

The Landlord Club

Join our Landlord Club for weekly updates on legislation, market trends, and our Letting Director's 'Investment Pick of the Week' for optimal ROI.

HTSPMD

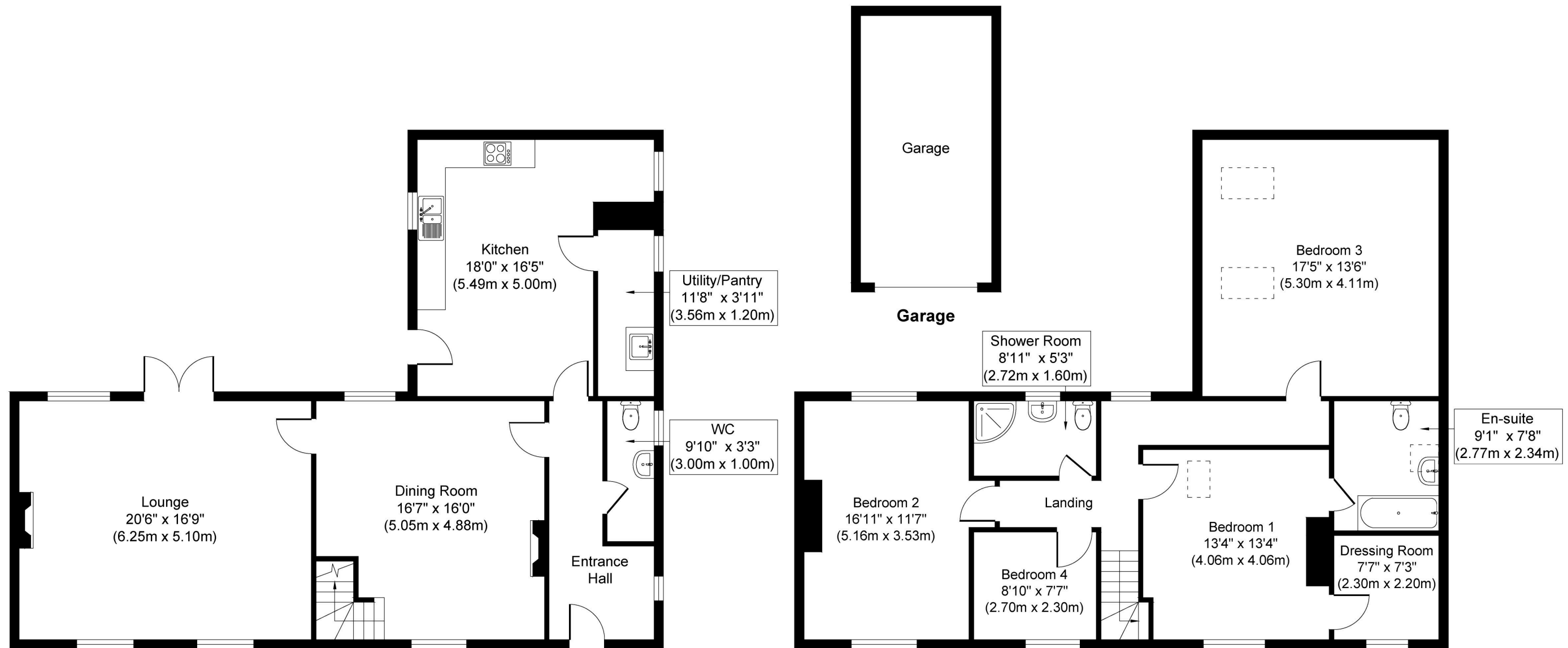
Tune into 'How's The Solihull Property Market Dom' weekly for a quick, insightful snapshot of the market.

The Mortgage Update

Get weekly insights and the best deals with our Mortgage Update, your shortcut to navigating the complex mortgage landscape confidently.



SCAN TO VIEW OUR WEEKLY FILMS & SUBSCRIBE



Ground Floor
Approximate Floor Area
1050 sq. ft
(97.53 sq. m)

First Floor
Approximate Floor Area
1050 sq. ft
(97.53 sq. m)

Whilst every attempt has been made to ensure the accuracy of the floor plan contained here, measurements of doors, windows, rooms and any other items are approximate and no responsibility is taken for any error, omission, or mis-statement. The measurements should not be relied upon for valuation, transaction and/or funding purposes. This plan is for illustrative purposes only and should be used as such by any prospective purchaser or tenant.

The services, systems and appliances shown have not been tested and no guarantee as to their operability or efficiency can be given.