

Need a Mortgage in principle to make offers? Call us now for quick assistance!
0121 775 0101



Do you need to sell? Start your journey now! Call us we can help.
0121 775 0101



SCAN FOR MORE INFO
SIZE - 2456 sq Ft
TENURE - Freehold
COUNCIL TAX - Solihull Metropolitan Borough Council - G
BROADBAND - Upload Max 1000Mbps Download Max 1800Mbps
MOBILE SERVICES - EE - 89%, 3 - 85%, 02 - 84%, Vodafone - 84%
EPC - B - 90
PARKING - For at least 6 Cars
FLOODRISK - Very Low
SERVICES - Mains
COVENANTS - N/A

8 Hampton Gate

Friday Lane, Barston, B92 0JF
Offers Over £900,000

Nestled in the serene surroundings of Friday Lane, Barston, this remarkable four-bedroom detached house offers an exceptional living experience within a private gated development of just ten exclusive homes. This stunning family home combines modern living with energy efficiency in a peaceful setting, making it an ideal choice for those seeking comfort and style.

FEATURES

- Executive Detached Residence
- Private Gated Development
- Open Plan Kitchen/Dining/Living Area
- Formal Lounge
- Dining Room
- Study/Play Room
- Two Double Bedrooms with Dressing Area & En-Suite's
- Two Further Bedrooms
- Family Bathroom
- South West Facing Rear Garden with Access to Private Meadow
- Garage En-Bloc Plus Parking for up to 6 Cars

Are you an investor interested in expanding your portfolio?

Call 01564 777 314 to provide your investment criteria for alerts.



Sneak Peeks

Every week, we unveil "Sneak Peeks," a feature showcasing exclusive properties before they hit Rightmove and other platforms.

The Landlord Club

Join our Landlord Club for weekly updates on legislation, market trends, and our Letting Director's 'Investment Pick of the Week' for optimal ROI.

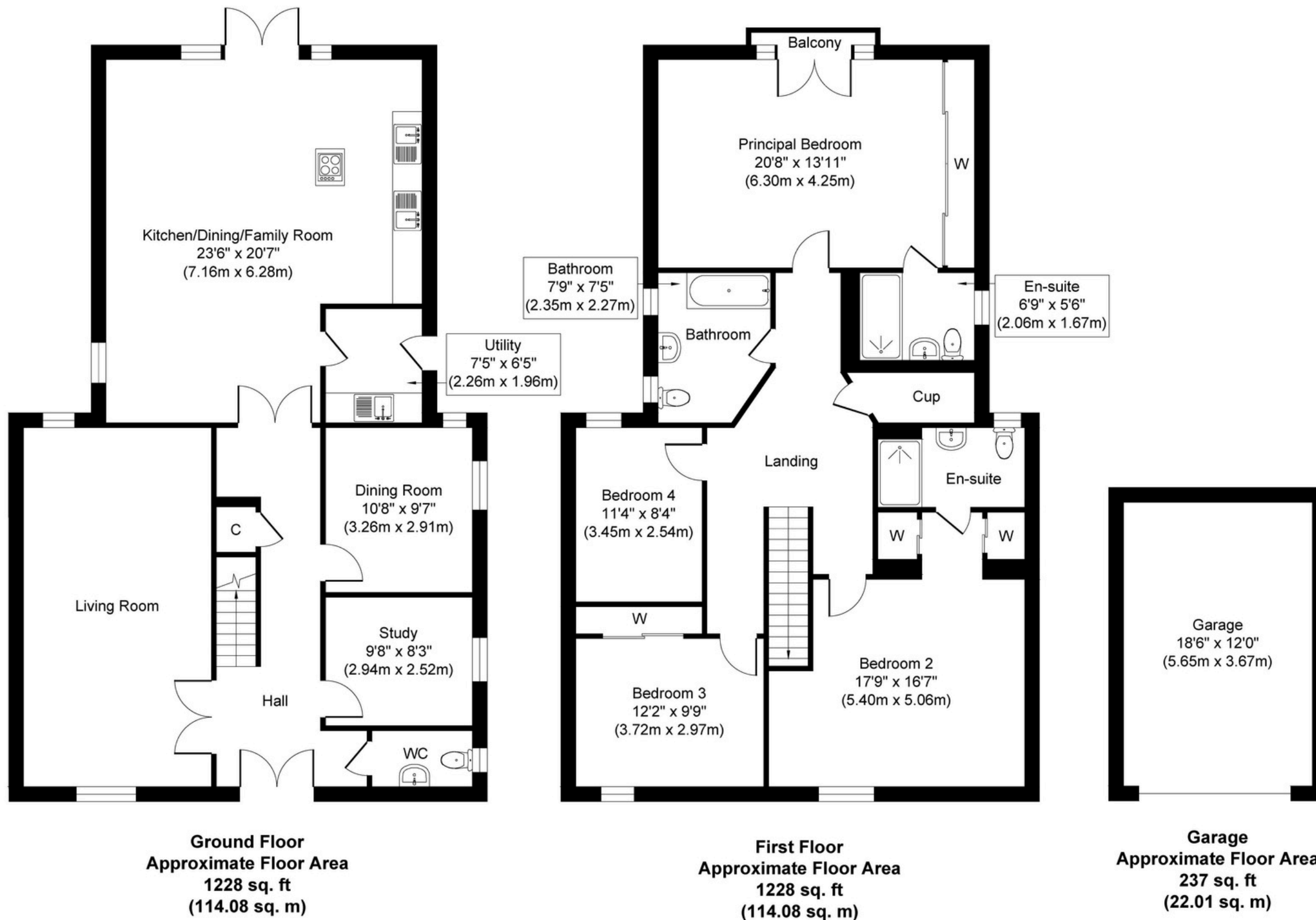
HTSPMD

Tune into 'How's The Solihull Property Market Dom' weekly for a quick, insightful snapshot of the market.

The Mortgage Update

Get weekly insights and the best deals with our Mortgage Update, your shortcut to navigating the complex mortgage landscape confidently.

SCAN TO VIEW OUR WEEKLY FILMS & SUBSCRIBE



Whilst every attempt has been made to ensure the accuracy of the floor plan contained here, measurements of doors, windows, rooms and any other items are approximate and no responsibility is taken for any error, omission, or mis-statement. The measurements should not be relied upon for valuation, transaction and/or funding purposes. This plan is for illustrative purposes only and should be used as such by any prospective purchaser or tenant.

The services, systems and appliances shown have not been tested and no guarantee as to their operability or efficiency can be given.