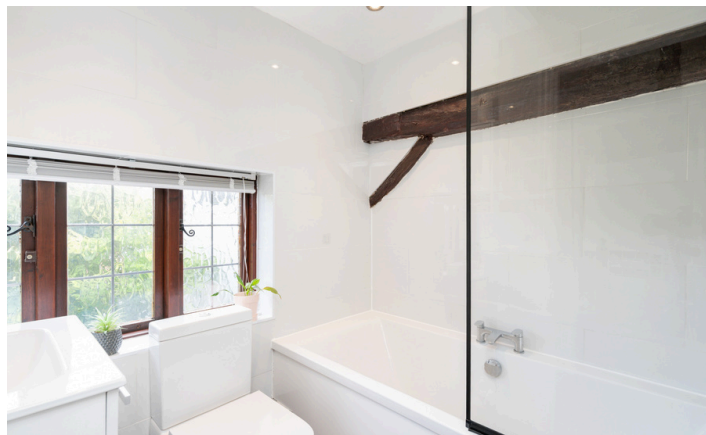


Need a Mortgage in principle to make offers? Call us now for quick assistance!
0121 775 0101



Do you need to sell? Start your journey now! Call us we can help.
01564 777 314



251a High Street
Henley in Arden, B95 5BG
Offers in the Region of £450,000

SCAN FOR MORE INFO
SIZE - 720 Sq Ft
TENURE - Freehold
COUNCIL TAX - Warwick District Council - E
BROADBAND - Upload Max 220Mbps Download Max 1800Mbps
MOBILE - EE Three O2 Vodaphone
EPC - D - 64
PARKING - Allocated to Rear of Property
FLOODRISK - Very Low
SERVICES - Mains
COVENANTS - N/A

FEATURES

- Character Property Situated in the Heart of Henley in Arden
- Bright & Welcoming Dining Hall
- Fitted Kitchen
- Spacious Lounge with Log Burner
- Two Good Sized Double Bedrooms
- Family Bathroom
- Cottage Style Low Maintenance Rear Garden
- Allocated Parking to Rear
- Walking Distance to the High Street Amenities
- £75 Per Quarter for Upkeep of Harris Mews (car park and garden)
- £300 Per Annum Service Charge
- Grade II Listed

Are you an investor interested in expanding your portfolio?

Call 01564 777 314 to provide your investment criteria for alerts.



SCAN TO VIEW OUR WEEKLY FILMS & SUBSCRIBE

Sneak Peeks

Every week, we unveil "Sneak Peeks," a feature showcasing exclusive properties before they hit Rightmove and other platforms.

The Landlord Club

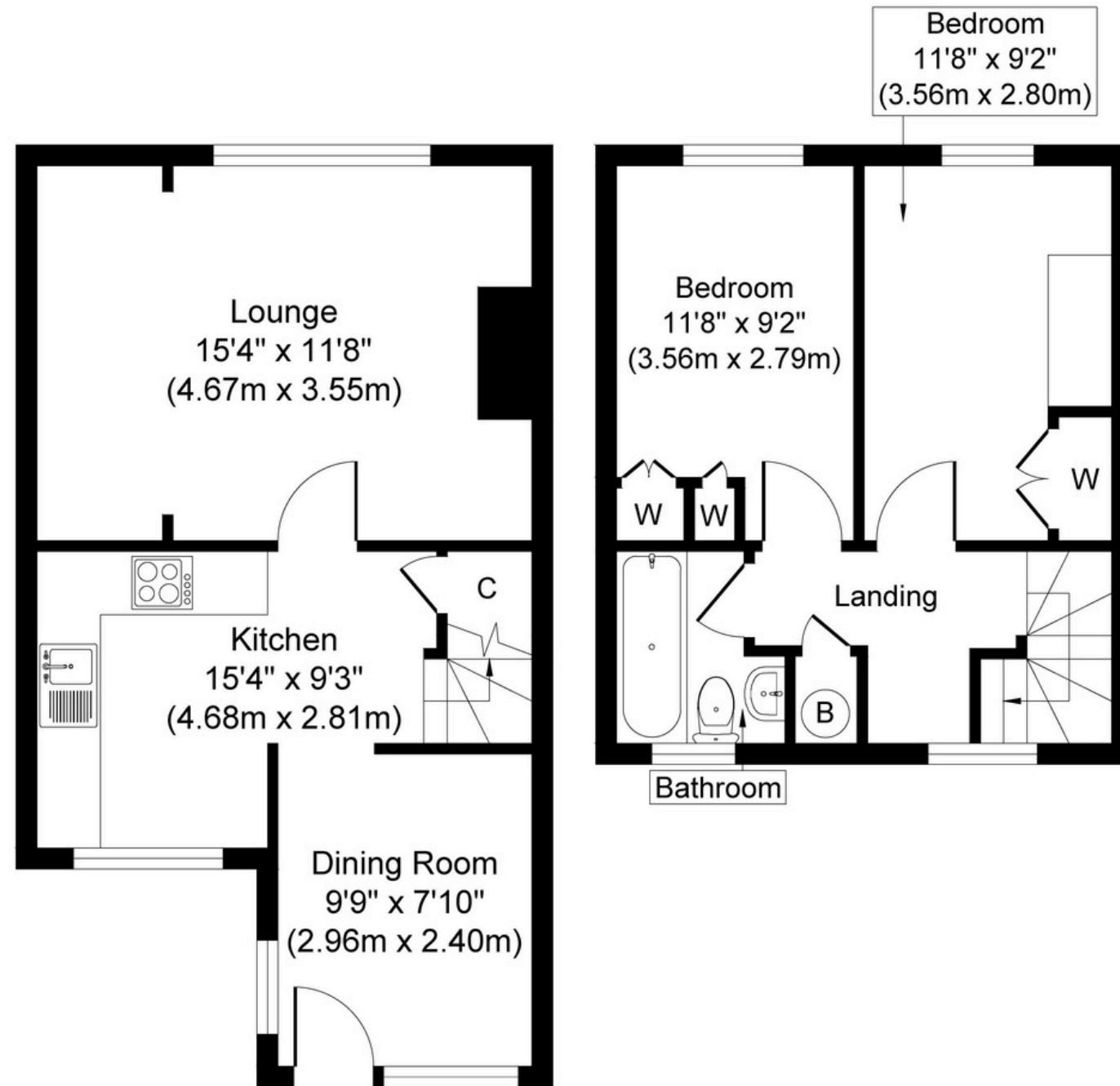
Join our Landlord Club for weekly updates on legislation, market trends, and our Letting Director's 'Investment Pick of the Week' for optimal ROI.

HTSPMD

Tune into 'How's The Solihull Property Market Dom' weekly for a quick, insightful snapshot of the market.

The Mortgage Update

Get weekly insights and the best deals with our Mortgage Update, your shortcut to navigating the complex mortgage landscape confidently.



Ground Floor
Approximate Floor Area
381 sq. ft
(35.40 sq. m)

First Floor
Approximate Floor Area
340 sq. ft
(31.60 sq. m)

Whilst every attempt has been made to ensure the accuracy of the floor plan contained here, measurements of doors, windows, rooms and any other items are approximate and no responsibility is taken for any error, omission, or mis-statement. The measurements should not be relied upon for valuation, transaction and/or funding purposes. This plan is for illustrative purposes only and should be used as such by any prospective purchaser or tenant.

The services, systems and appliances shown have not been tested and no guarantee as to their operability or efficiency can be given.